

LOC/DME I-SGC 110.1 Chan 38	APP CRS 191°	Rwy Idg 11500 TDZE 302 Apt Elev 313
---	------------------------	--

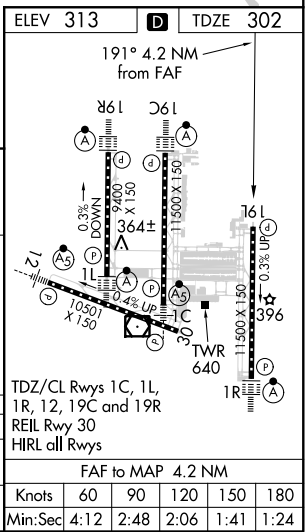
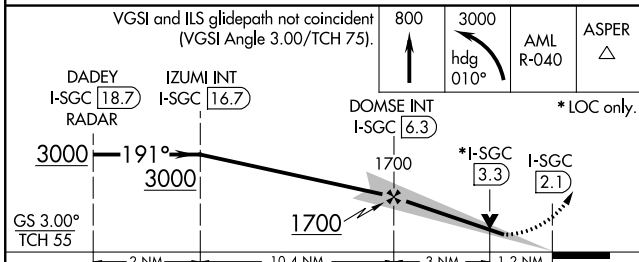
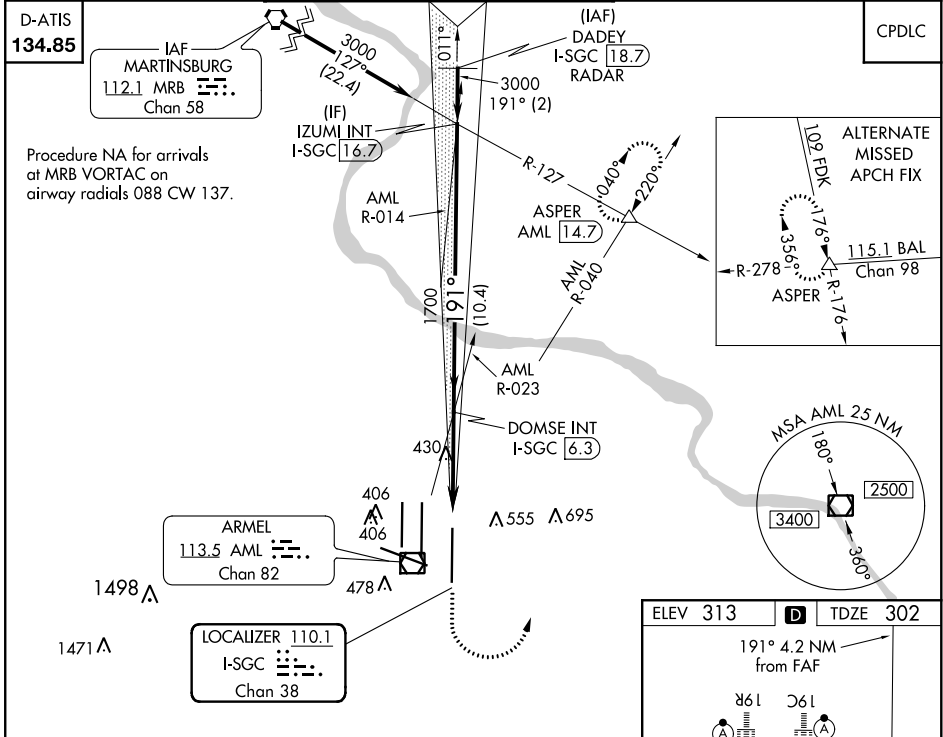
ILS or LOC RWY 19L

WASHINGTON DULLES INTL (IAD)

Simultaneous approach authorized with Rwy 19C or 19R.
****1800 RVR authorized with the use of FD or AP or HUD to DA.**

MISSED APPROACH: Climb to 800 then climbing left turn to 3000 on heading 010° and AML VOR/DME R-040 to ASPER INT/AML 14.7 DME and hold.

POTOMAC APP CON 120.45 306.925 (241°-330°) 128.525 306.925 (091°-240°) 126.1 338.25 (331°-090°)	DULLES TOWER 120.1 317.8 (Rwy 1R/19L) 120.25 348.6 (Rwy 1C/19C) 134.425 348.6 (Rwys 1L/19R and 12/30)	GND CON 121.9 317.8 (EAST) 121.625 348.6 (WEST)	CLNC DEL 135.7 317.8
---	---	---	--------------------------------



DADEY I-SGC 18.7 RADAR	IZUMI INT I-SGC 16.7	DOMSE INT I-SGC 6.3	*I-SGC 3.3	I-SGC 2.1
3000 — 191° — 3000		1700	*LOC only.	
GS 3.00° TCH 55	2 NM	10.4 NM	3 NM	1.2 NM

CATEGORY	A	B	C	D
S-ILS 19L	**502/24 200 (200-½)			
S-LOC 19L	740/24 438 (500-½)	740/40 438 (500-¾)	740/50 438 (500-1)	

NE-3, 10 SEP 2020 to 08 OCT 2020

NE-3, 10 SEP 2020 to 08 OCT 2020