

LOC I-DLX <b>111.3</b>	APP CRS <b>191°</b>	Rwy Idg <b>11089</b> TDZE <b>272</b> Apt Elev <b>312</b>
---------------------------	------------------------	--

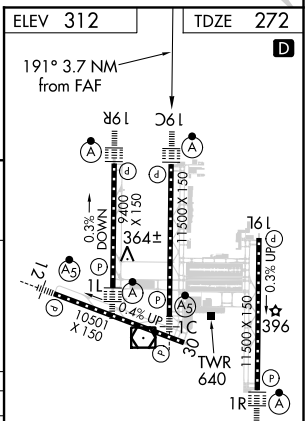
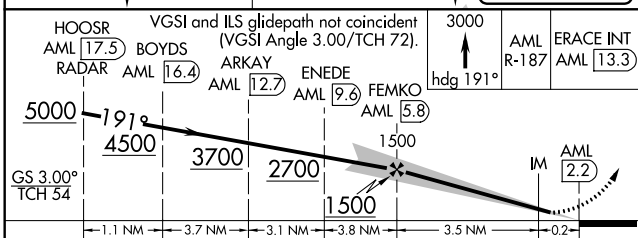
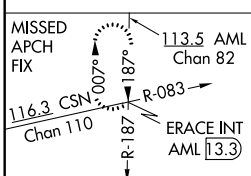
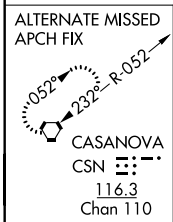
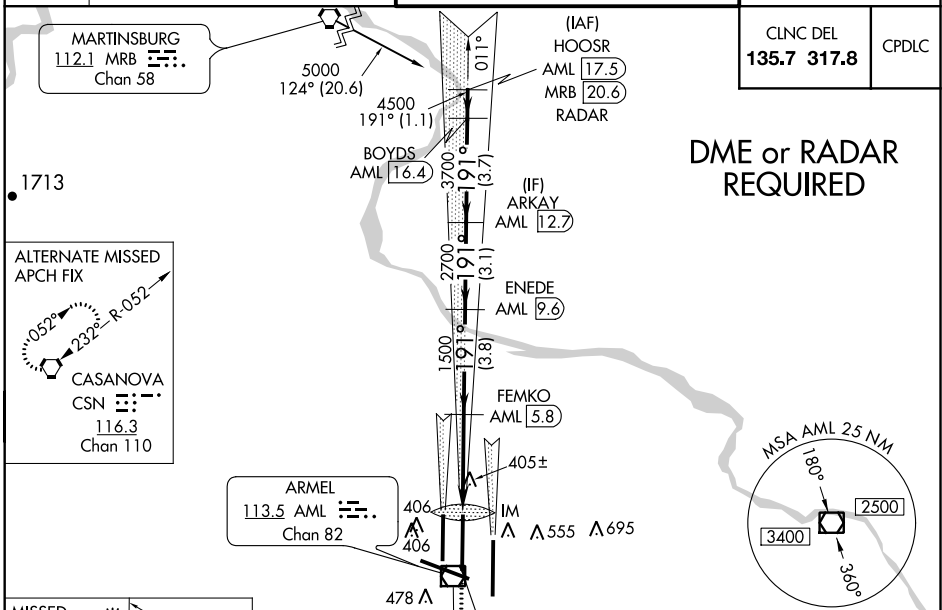
# ILS or LOC/DME RWY 19C

WASHINGTON DULLES INTL (IAD)

**⚠** DME from AML VOR/DME. Simultaneous reception of I-DLX and AML DME required. Simultaneous approach authorized with ILS or LOC Rwy 19L, ILS Rwy 19L (Cat II), ILS or LOC/DME Rwy 19R, ILS Rwy 19R (Cat II), ILS Rwy 19R (Cat III).

**ALSF-2** MISSED APPROACH: Climb to 3000 via heading 191° and AML VOR/DME R-187 to ERACE INT/AML 13.3 DME and hold.

D-ATIS <b>134.85</b>	POTOMAC APP CON <b>120.45 306.925</b> (241°-330°) <b>128.525 306.925</b> (091°-240°) <b>126.1 338.25</b> (331°-090°)	DULLES TOWER <b>120.1 317.8</b> (Rwy 1R/19L) <b>120.25 348.6</b> (Rwy 1C/19C) <b>134.425 348.6</b> (Rwys 1L/19R and 12/30)	GND CON <b>121.9 317.8</b> (EAST) <b>121.625 348.6</b> (WEST)
-------------------------	---	---	---



CATEGORY	A	B	C	D
S-ILS 19C	472/18		200 (200-½)	
S-LOC 19C	660/24		388 (400-½)	
CIRCLING	940-1 628 (700-1)		940-2 628 (700-2)	
	940-1 ¾ 628 (700-1¾)		940-2 ¾ 628 (700-1¾)	

TDZ/CL 1C, 1L, 1R, 12, 19C and 19R  
REIL Rwy 30  
HIRL all Rwys

NE-3, 10 SEP 2020 to 08 OCT 2020

NE-3, 10 SEP 2020 to 08 OCT 2020