

LOC/DME I-OIU 110.75 Chan 44 (Y)	APP CRS 011°	Rwy ldg 9400 TDZE 296 Apt Elev 312
---	------------------------	--

ILS or LOC/DME RWY 1L

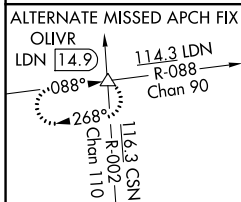
WASHINGTON DULLES INTL (IAD)

Simultaneous approach authorized with ILS or LOC/DME Rwy 1C, ILS Rwy 1C (Cat II), RNAV (GPS) Y Rwy 1C, ILS or LOC Rwy 1R, ILS Rwy 1R (Cat II), ILS Rwy 1R (Cat III), RNAV (GPS) Y Rwy 1R.

ALSF-2

MISSED APPROACH: Climb to 800 then climbing left turn to 5000 via heading 240° and AML VOR/DME R-270 to OLIVR INT/AML 20 DME and hold, continue climb-in-hold to 5000.

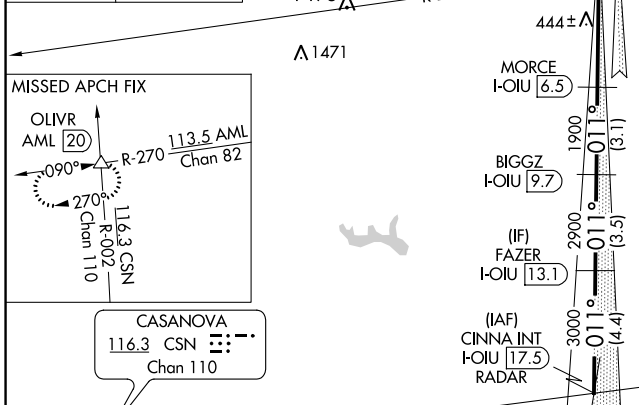
POTOMAC APP CON 120.45 306.925 (241°-330°) 128.525 306.925 (091°-240°) 126.1 338.25 (331°-090°)	DULLES TOWER 120.1 317.8 (Rwy 1R/19L) 120.525 348.6 (Rwy 1C/19C) 134.425 348.6 (Rwys 1L/19R and 12/30)	GND CON 121.9 317.8 (EAST) 121.625 348.6 (WEST)	CLNC DEL 135.7 317.8
---	--	---	--------------------------------



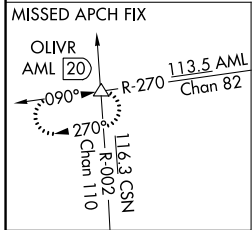
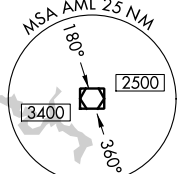
D-ATIS
134.85

LOCALIZER 110.75
I-OIU
Chan 44 (Y)

CPDLC



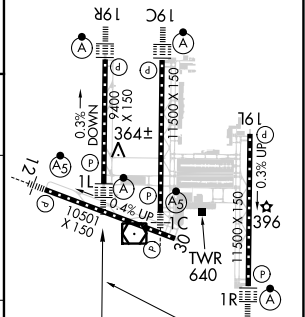
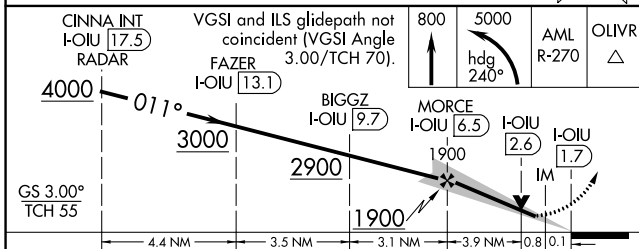
ARMEL 113.5 AML
Chan 82



CASANOVA 116.3 CSN
Chan 110

ELEV 312	TDZE 296
----------	----------

DME or RADAR REQUIRED



CATEGORY	A	B	C	D
S-ILS 1L	496/18 200 (200-½)			
S-LOC 1L	660/24 364 (400-½)		660/40 364 (400-¾)	
CIRCLING	940-1 628 (700-1)		940-1¾ 628 (700-1¾)	940-2 628 (700-2)

011° 4.8 NM from FAF

TDZ/CL Rwys 1C, 1L, 1R, 12, 19C and 19R
REIL Rwy 30
HIRL all Rwys

NE-3, 10 SEP 2020 to 08 OCT 2020

NE-3, 10 SEP 2020 to 08 OCT 2020