

WAAS CH <b>86709</b> <b>W19D</b>	APP CRS <b>191°</b>	Rwy Idg TDZE <b>278</b> Apt Elev <b>312</b>	<b>9400</b>
--	------------------------	---	-------------

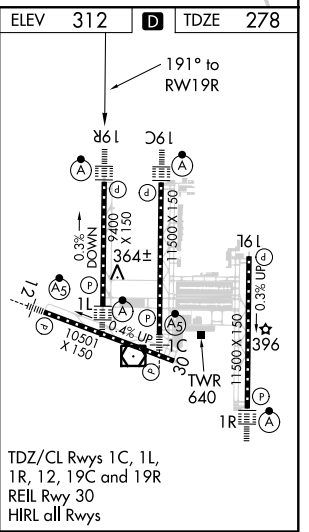
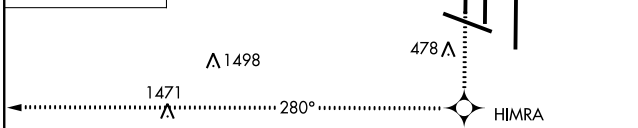
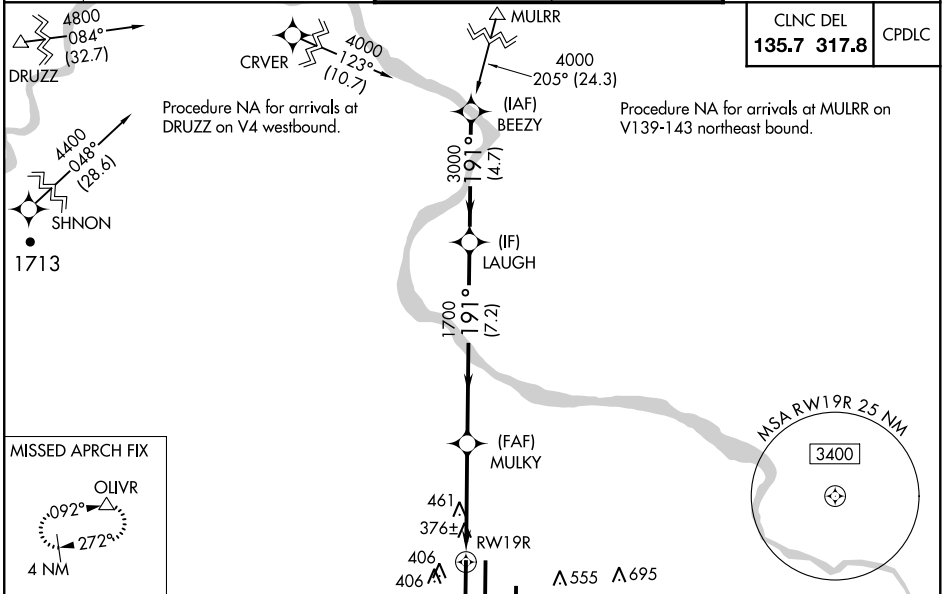
# RNAV (GPS) RWY 19R

WASHINGTON DULLES INTL (IAD)

**▼** For uncompensated Baro-VNAV systems, LNAV/VNAV NA below -15°C (5°F) or above 48°C (118°F). DME/DME RNP -0.3 NA. Simultaneous approach authorized with ILS or LOC Rwy 19L, ILS Rwy 19L (Cat II). LNAV procedure NA during simultaneous operations. Use of FD or AP providing RNAV track guidance required during simultaneous operations.

**ALSf-2**  
**MISSED APPROACH:** Climb to 5000 direct HIMRA and on 280° track to OLIVR and hold, continue climb-in-hold to 5000.

D-ATIS <b>134.85</b>	POTOMAC APP CON <b>120.45 306.925</b> (241°-330°) <b>128.525 306.925</b> (091°-240°) <b>126.1 338.25</b> (331°-090°)	DULLES TOWER <b>120.1 317.8</b> (Rwy 1R/19L) <b>120.25 348.6</b> (Rwy 1C/19C) <b>134.425 348.6</b> (Rwy 1L/19R and 12/30)	GND CON <b>121.9 317.8</b> (EAST) <b>121.625 348.6</b> (WEST)
-------------------------	---	--	---



Procedure	VGSi and RNAV glidepath not coincident (VGSi Angle 3.00/TCH 70).	5000	HIMRA	tr 280°	OLIVR
Turn NA	LAUGH				
GP 3.00° TCH 55		3000	MULKY		
			1700		
CATEGORY	A	B	C	D	
LPV DA		478/18	200 (200-½)		
LNAV/VNAV DA		714/50	436 (500-1)		
LNAV MDA	720/24	442 (500-½)	720/40 442 (500-¾)	720/50 442 (500-1)	
CIRCLING	940-1	628 (700-1)	940-1¾ 628 (700-1¾)	940-2 628 (700-2)	

NE-3, 10 SEP 2020 to 08 OCT 2020

NE-3, 10 SEP 2020 to 08 OCT 2020