


APP CRS	Rwy Idg	11500
011°	TDZE	286
	Apt Elev	312

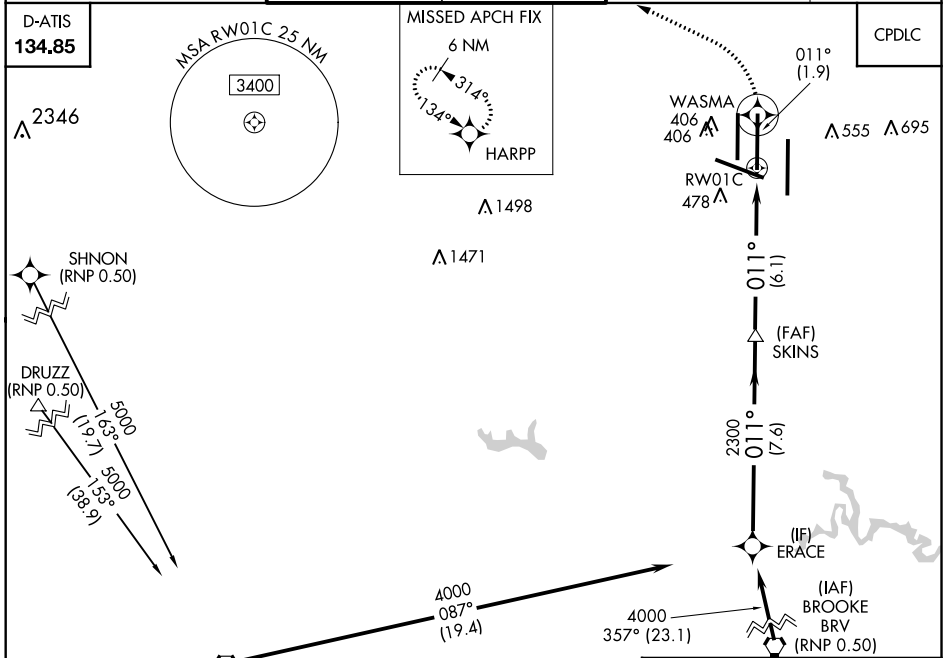
RNAV (RNP) Z RWY 1C

WASHINGTON DULLES INTL (IAD)

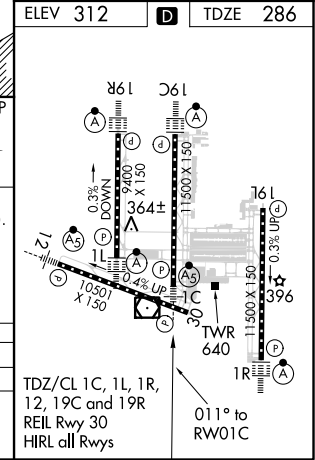
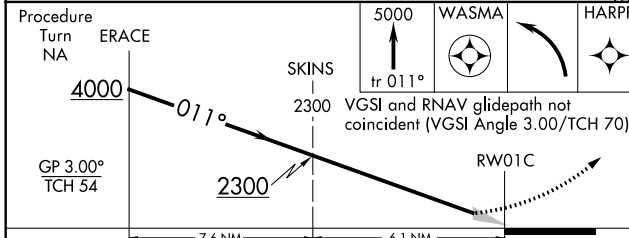
▼ For uncompensated Baro-VNAV systems, procedure NA below -1.4°C (6°F) or above 48°C (119°F). For inoperative ALSF-2, increase RNP 0.30 visibility to 1¼. GPS required. Simultaneous approach authorized with ILS or LOC Rwy 1R, ILS Rwy 1R (Cat II), ILS Rwy 1R (Cat III). Use of FD or AP providing RNAV track guidance required during simultaneous operations.

MALSR

MISSED APPROACH: Climb to 5000 on track 011° to WASMA and left turn direct HARPP and hold.

POTOMAC APP CON 120.45 306.925 (241°-330°) 128.525 306.925 (091°-240°) 126.1 338.25 (331°-090°)	DULLES TOWER 120.1 317.8 (Rwys 1R/19L) 120.25 348.6 (Rwy 1C/19C) 134.425 348.6 (Rwys 1L/19R and 12/30)	GND CON 121.9 317.8 (EAST) 121.625 348.6 (WEST)	CLNC DEL 135.7 317.8
---	--	---	--------------------------------



ELEV	312	TDZE	286
------	------------	------	------------



CATEGORY	A	B	C	D
RNP 0.30 DA	817-1½ 531 (600-1½)			

AUTHORIZATION REQUIRED

TDZ/CL 1C, 1L, 1R, 12, 19C and 19R
 REIL Rwy 30
 HIRL all Rwys

NE-3, 10 SEP 2020 to 08 OCT 2020

NE-3, 10 SEP 2020 to 08 OCT 2020