

WAAS CH <b>56409</b> W01A	APP CRS <b>011°</b>	Rwy ldg <b>11500</b> TDZE <b>312</b> Apt Elev <b>312</b>
---------------------------------	------------------------	--

# RNAV (GPS) Y RWY 1R

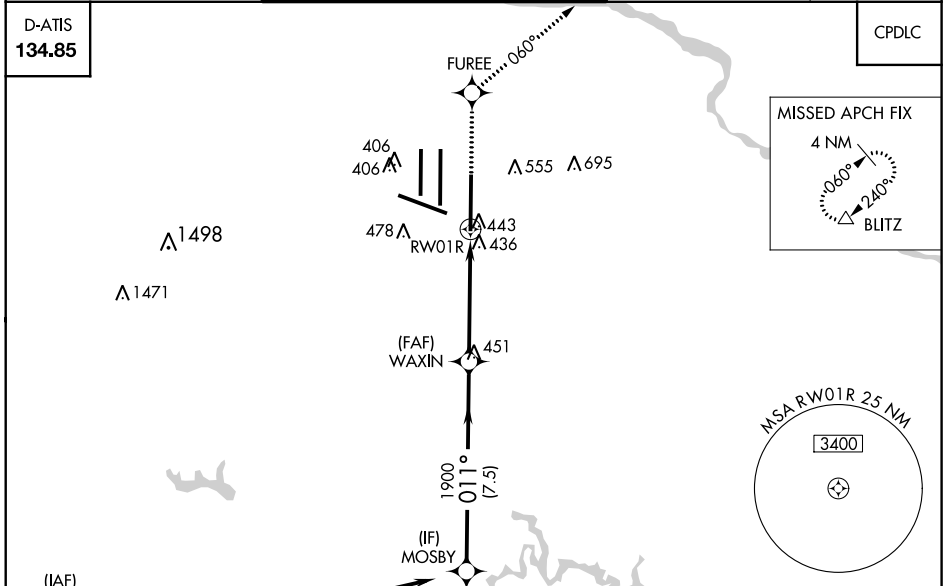
WASHINGTON DULLES INTL (IAD)

**▼** For uncompensated Baro-VNAV systems, LNAV/VNAV NA below -15°C (5°F) or above 48°C (118°F). DME/DME RNP-0.3 NA. Simultaneous approach authorized with ILS or LOC/DME Rwy 1L, ILS Rwy 1L (Cat II), ILS Rwy 1L (Cat III). LNAV procedure NA during simultaneous operations. Use of FD or AP providing RNAV track guidance required during simultaneous operations.



**MISSED APPROACH:**  
Climb to 3000 direct FUREE and on 060° track to BLITZ and hold.

POTOMAC APP CON <b>120.45 306.925</b> (241°-330°) <b>128.525 306.925</b> (091°-240°) <b>126.1 338.25</b> (331°-090°)	DULLES TOWER <b>120.1 317.8</b> (Rwy 1R/19L) <b>120.25 348.6</b> (Rwy 1C/19C) <b>134.425 348.6</b> (Rwys 1L/19R and 12/30)	GND CON <b>121.9 317.8</b> (EAST) <b>121.625 348.6</b> (WEST)	CLNC DEL <b>135.7 317.8</b>
---	---	---	--------------------------------

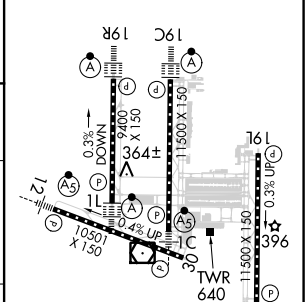
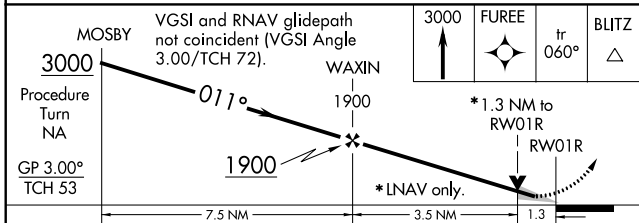


NE-3, 10 SEP 2020 to 08 OCT 2020

NE-3, 10 SEP 2020 to 08 OCT 2020

D-ATIS <b>134.85</b>	CPDLC
-------------------------	-------

ELEV 312	<b>D</b>	TDZE 312
----------	----------	----------



CATEGORY	A	B	C	D
LPV DA		512/18	200 (200-1/2)	
LNAV/VNAV DA		764/50	452 (500-1)	
LNAV MDA	800/24	488 (500-1/2)	800/40 488 (500-3/4)	800/50 488 (500-1)
CIRCLING	940-1	628 (700-1)	940-1 3/4 628 (700-1 3/4)	940-2 628 (700-2)

TDZ/CL Rwys 1C, 1L, 1R, 12, 19C and 19R  
REL Rwy 30  
HIRL all Rwys