

SCRAM FIVE DEPARTURE (RNAV)

NE-3, 10 SEP 2020 to 08 OCT 2020

TOP ALTITUDE:
3000



P-56B

P-56A

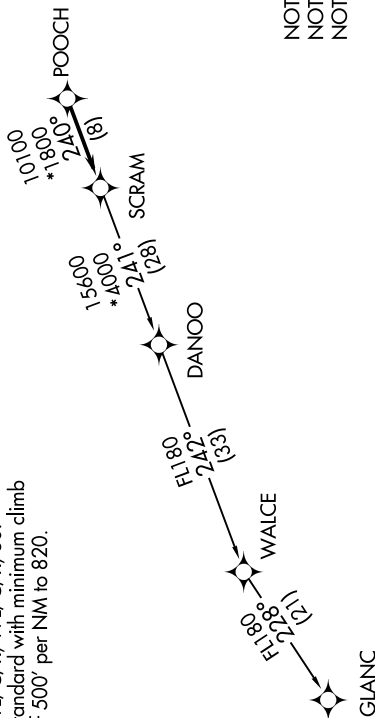
DEPARTURE ROUTE DESCRIPTION

TAKEOFF RWY 1L, 1C, 1R, 19L, 19C, 19R, 30: Climb on heading assigned by ATC, expect RADAR vectors to POOCH, then on track 240° to SCRAM, thence. . . .
 . . . on GLANC transition. Maintain 3000. Expect clearance to filed altitude within ten (10) minutes after departure.
GLANC TRANSITION (SCRAM5.GLANC):

- D-ATIS 134.85
- CLNC DEL 135.7 317.8
- CPDLC
- GND CON 121.9 317.8 (EAST)
- 121.625 348.6 (WEST)
- DULLES TOWER 120.1 317.8 (Rwy 1R/19L)
- 120.25 348.6 (Rwy 1C/19C)
- 134.425 348.6 (Rwys 1L/19R, 12/30)
- POTOMAC DEP CON 126.65 350.2

TAKEOFF MINIMUMS:

Rwys 1L/C/R, 19L/C/R, 30:
Standard with minimum climb of 500' per NM to 820.



NOTE: RNAV 1.
NOTE: RADAR required.
NOTE: DME/DME/IRU or GPS required.

NOTE: Chart not to scale.

NE-3, 10 SEP 2020 to 08 OCT 2020