

SELINGSGROVE SIX ARRIVAL

POTOMAC APP CON

133.0 288.35

D-ATIS

134.85

DULLES TOWER

120.1 317.8 (Rwy 1R/19L)

120.25 348.6 (Rwy 1C/19C)

134.425 348.6 (1L/19R, 12/30)

WILLIAMSPORT
 114.4 FQM Chan 91
 N41°20.31'-W76°46.49'
 L-30, H-10-12

WATSO
 N41°02.77'
 W76°50.00'

MILTON
 109.2 MIP Chan 29

DIANO
 N41°00.03'
 W76°13.56'

WILKES-BARRE
 111.6 LVZ Chan 53
 N41°16.37'-W75°41.37'
 L-30-33-34, H-10-12

PHILIPSBURG
 115.5 PSB Chan 102

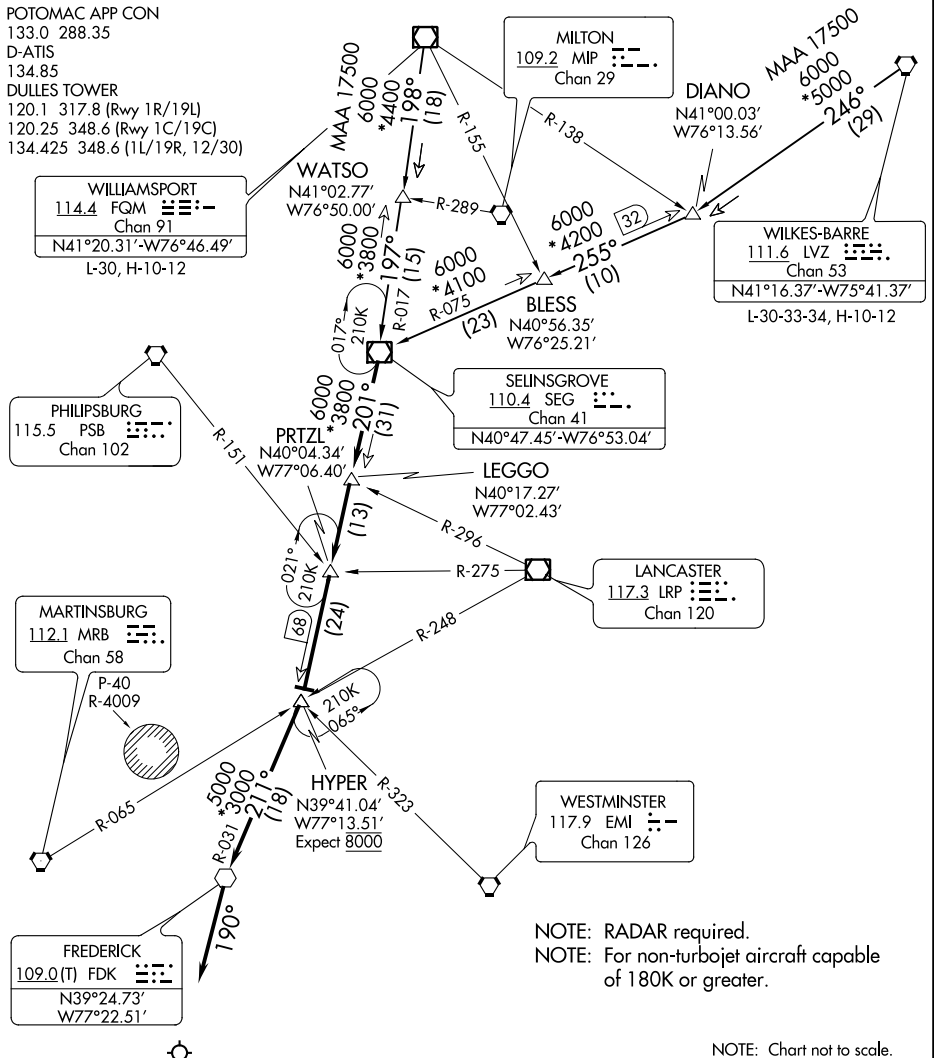
SELINGSGROVE
 110.4 SEG Chan 41
 N40°47.45'-W76°53.04'

MARTINSBURG
 112.1 MRB Chan 58

LANCASTER
 117.3 LRP Chan 120

FREDERICK
 109.0 (M) FDK Chan 126

WESTMINSTER
 117.9 EMI Chan 126



NE-3, 10 SEP 2020 to 08 OCT 2020

NE-3, 10 SEP 2020 to 08 OCT 2020

ARRIVAL ROUTE DESCRIPTION

WILKES-BARRE TRANSITION (LVZ.SEG6):

From over LVZ VORTAC on LVZ R-246 and SEG R-075 to SEG VOR/DME. Thence....

WILLIAMSPORT TRANSITION (FQM.SEG6):

From over FQM VOR/DME on FQM R-198 and SEG R-017 to SEG VOR/DME. Thence....

....From SEG VOR/DME on SEG R-201 to LEGGO, then on SEG R-201 to PRTZL, then on SEG R-201 to HYPER, then on FDK R-031 to FDK VOR, then on heading 190° or as assigned by ATC. Expect RADAR vectors to final approach course.

NOTE: Chart not to scale.

SELINGSGROVE SIX ARRIVAL