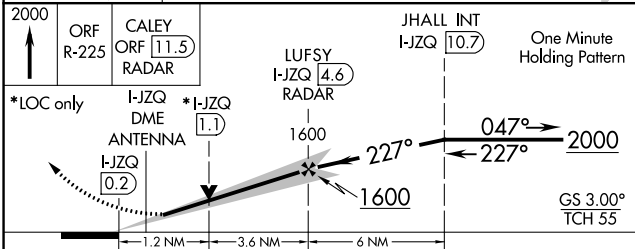
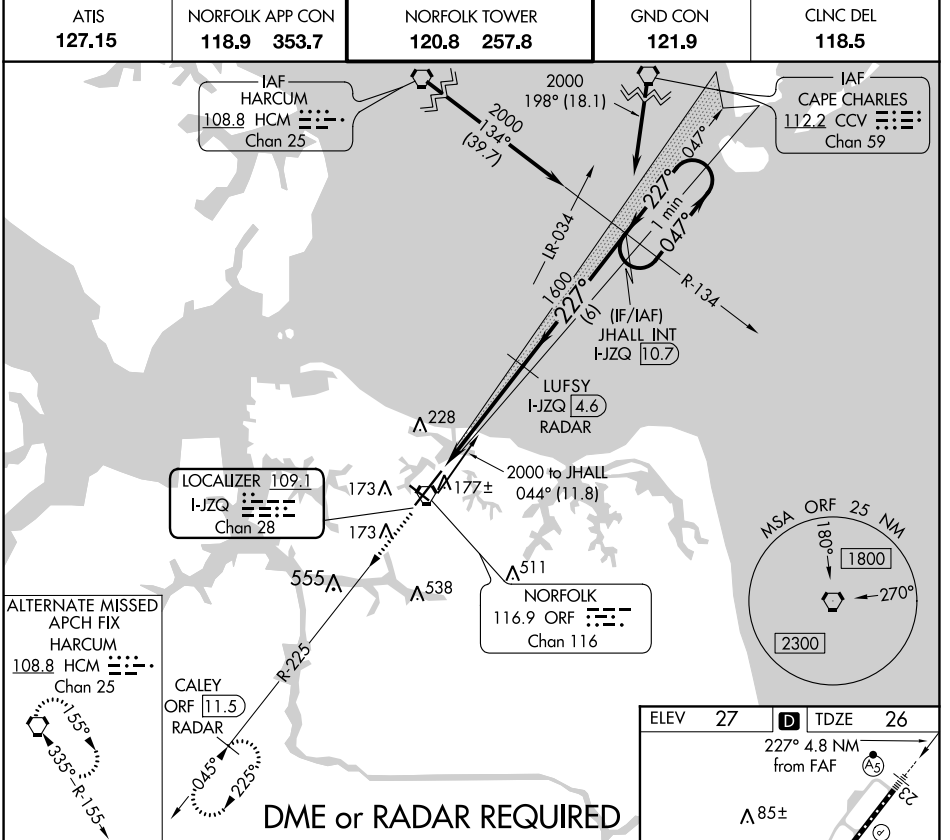


LOC/DME I-JZQ 109.1 Chan 28	APP CRS 227°	Rwy Idg TDZE Apt Elev 8995 26 27
--	------------------------	--

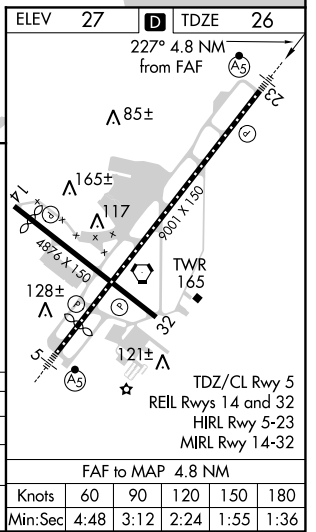
ILS or LOC RWY 23

NORFOLK INTL (ORF)

	MALSR 	MISSED APPROACH: Climb to 2000 on ORF VORTAC R-225 to CALEY/ORF 11.5 DME/RADAR and hold.			
	<table border="1"> <tr> <td>ATIS 127.15</td> <td>NORFOLK APP CON 118.9 353.7</td> <td>NORFOLK TOWER 120.8 257.8</td> <td>GND CON 121.9</td> <td>CLNC DEL 118.5</td> </tr> </table>	ATIS 127.15	NORFOLK APP CON 118.9 353.7	NORFOLK TOWER 120.8 257.8	GND CON 121.9
ATIS 127.15	NORFOLK APP CON 118.9 353.7	NORFOLK TOWER 120.8 257.8	GND CON 121.9	CLNC DEL 118.5	



CATEGORY	A	B	C	D
S-ILS 23	226-1/2		200 (200-1/2)	
S-LOC 23	460-1/2	434 (500-1/2)	460-3/4	434 (500-3/4)
C CIRCLING	480-1 453 (500-1)	540-1 513 (600-1)	540-1 1/2 513 (600-1 1/2)	900-2 3/4 873 (900-2 3/4)



NE-3, 08 OCT 2020 to 05 NOV 2020

NE-3, 08 OCT 2020 to 05 NOV 2020