

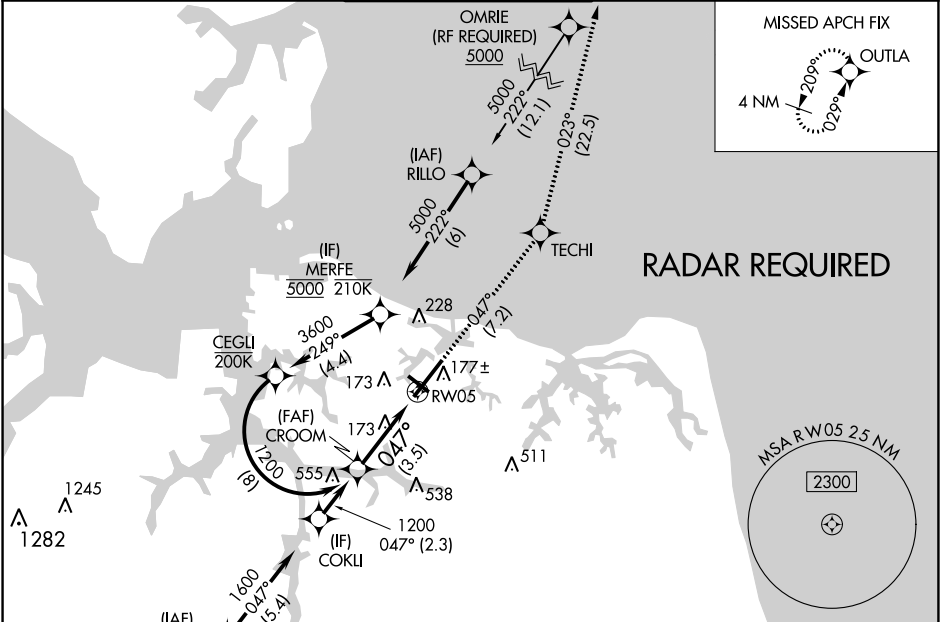
APP CRS	Rwy Idg	<b>7809</b>
<b>047°</b>	TDZE	<b>26</b>
	Apt Elev	<b>27</b>

# RNAV (RNP) Y RWY 5

NORFOLK INTL (ORF)

<p>For uncompensated Baro-VNAV systems, LNAV/VNAV NA below -9°C (16°F) or above 54°C (130°F). GPS required.</p>	<p>MALSR</p>	<p>MISSED APPROACH: Climb to 2000 on track 047° to TECHI and on track 023° to OUTLA and hold.</p>

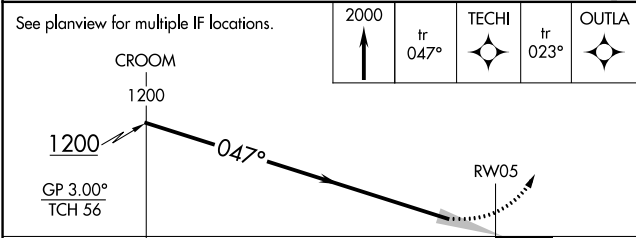
ATIS <b>127.15</b>	NORFOLK APP CON <b>118.9 353.7</b>	NORFOLK TOWER <b>120.8 257.8</b>	GND CON <b>121.9</b>	CLNC DEL <b>118.5</b>
-----------------------	---------------------------------------	-------------------------------------	-------------------------	--------------------------



NE-3, 08 OCT 2020 to 05 NOV 2020

NE-3, 08 OCT 2020 to 05 NOV 2020

ELEV	27	<b>D</b>	TDZE	26
------	----	----------	------	----



CATEGORY	A	B	C	D
RNP 0.10 DA		350/26	324 (400-½)	
RNP 0.30 DA		454/40	428 (500-¾)	

**AUTHORIZATION REQUIRED**

