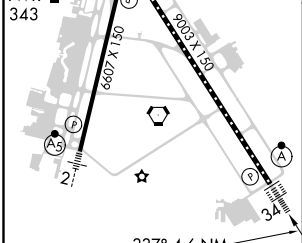
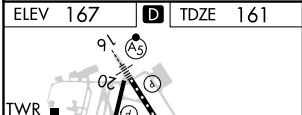
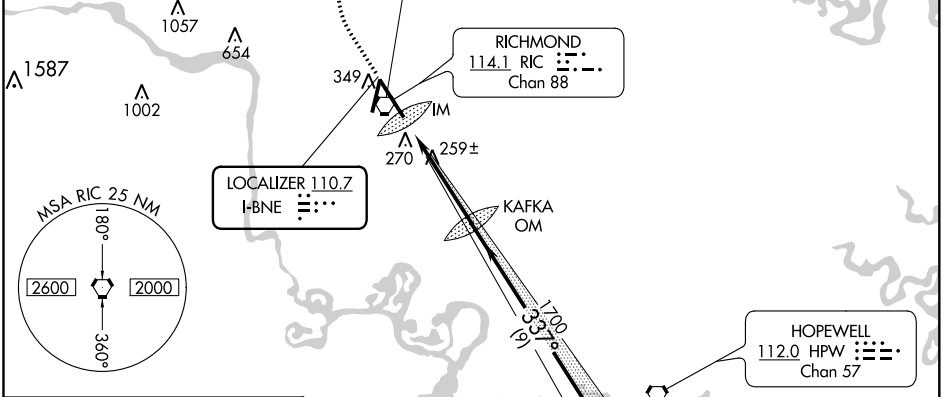
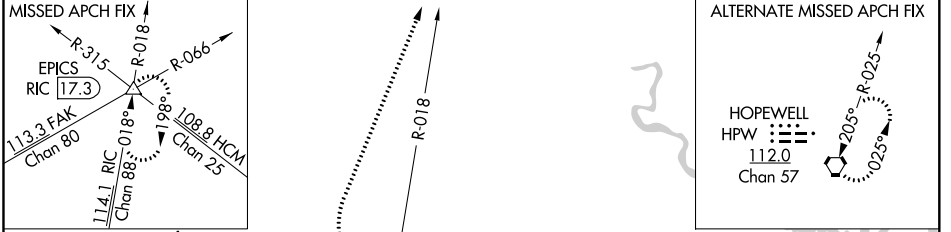


LOC I-BNE 110.7	APP CRS 337°	Rwy Idg TDZE Apt Elev	9003 161 167
---------------------------	------------------------	-----------------------------	-----------------------------------------

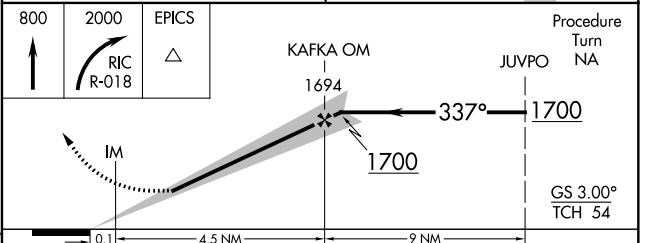
ILS or LOC RWY 34

RICHMOND INTL (RIC)

For inoperative ALSF-2, increase S-ILS 34 Cat E visibility to RVR 4000 and S-LOC 34 Cats C, D, and E visibility to RVR 5500.		ALSF-2 	MISSED APPROACH: Climb to 800 then climbing right turn to 2000 via RIC VORTAC R-018 to EPICS INT/RIC 17.3 DME and hold.	
ATIS 119.15 263.025	POTOMAC APP CON 126.4 282.375 (001°-185°) 126.75 307.2 (186°-360°)	RICHMOND TOWER 121.1 257.8	GND CON 121.9 348.6	CLNC DEL 127.55 348.6



ELEV 167	TDZE 161
TDZ/CL Rwy 34 HIRL Rwys 2-20 and 16-34 REIL Rwy 20 FAF to MAP 4.6 NM	
Knots	60 90 120 150 180
Min:Sec	4:36 3:04 2:18 1:50 1:32



800	2000	EPICS	Procedure Turn NA		
↑	RIC R-018	△			
IM		Kafka OM 1694	JUVPO 1700	GS 3.00° TCH 54	
0.1		4.5 NM		9 NM	
CATEGORY	A	B	C	D	E
S-ILS 34	361/18		200 (200-½)		361/24 200 (200-½)
S-LOC 34	520/24	359 (400-½)	520/30 359 (400-¾)		
CIRCLING	660-1 493 (500-1)		660-1½ 493 (500-1½)	720-2 553 (600-2)	740-2 573 (600-2)

NE-3, 08 OCT 2020 to 05 NOV 2020

NE-3, 08 OCT 2020 to 05 NOV 2020