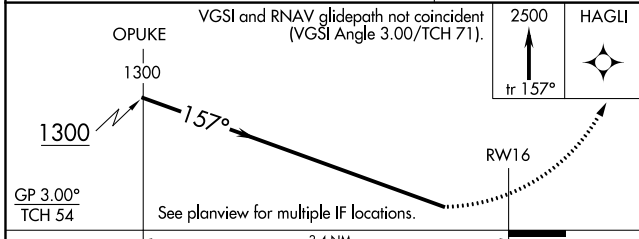
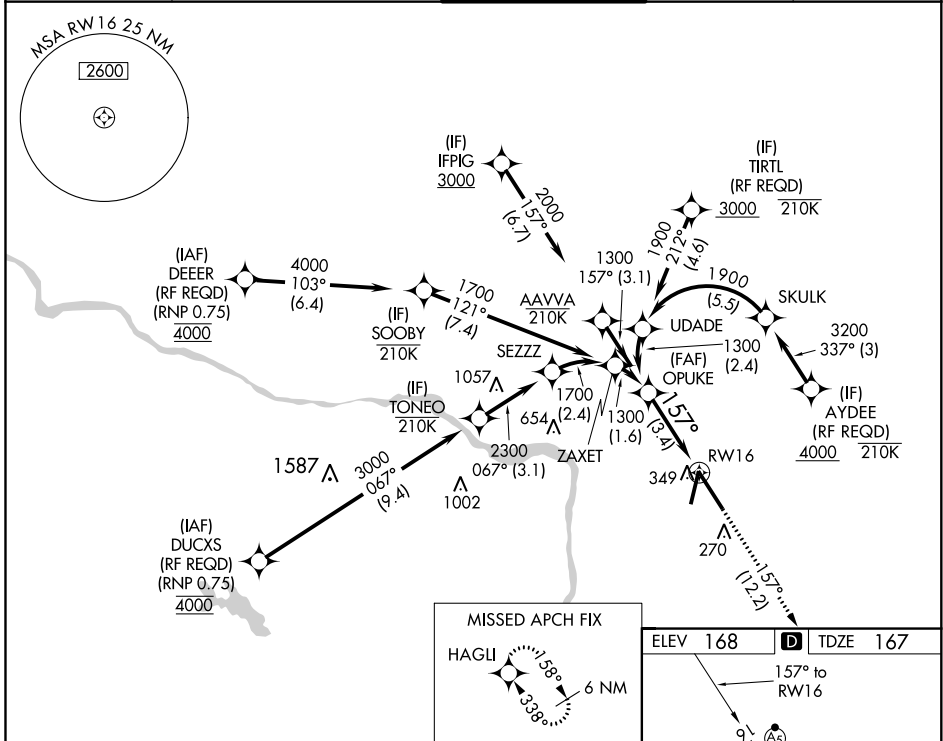


APP CRS	Rwy Idg	9003
157°	TDZE	167
	Apt Elev	168

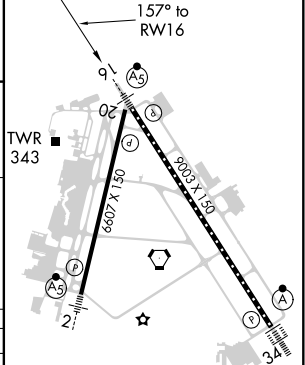
RNAV (RNP) Y RWY 16

RICHMOND INTL (RIC)

RNP AR APCH.		MALSR		MISSED APPROACH: Climb to 2500 on track 157° to HAGLI and hold.	
<p>▼ For uncompensated Baro-VNAV systems, procedure NA below -11°C (13°F) or above 54°C (130°F). For inop ALS, increase RNP 0.11 all Cats visibility to RVR 5500 and RNP 0.30 all Cats visibility to 1½ SM.</p>					
POTOMAC APP CON		RICHMOND TOWER		CLNC DEL	
ATIS	126.4 282.375 (001°-185°)	121.1 257.8	GND CON	121.9 348.6	127.55 348.6
119.15 263.025	126.75 307.2 (186°-360°)				



ELEV	168	D	TDZE	167
------	------------	----------	------	------------



GP 3.00°	See planview for multiple IF locations.			
TCH 54	3.4 NM			
CATEGORY	A	B	C	D
RNP 0.11 DA	506/40 339 (400-¾)			
RNP 0.30 DA	606/50 439 (500-1)			

AUTHORIZATION REQUIRED

TDZ/CL Rwy 34
HIRL Rwy 2-20 and 16-34
REIL Rwy 20

NE-3, 08 OCT 2020 to 05 NOV 2020

NE-3, 08 OCT 2020 to 05 NOV 2020