

APP CRS	Rwy Idg	6607
203°	TDZE	168
	Apt Elev	168

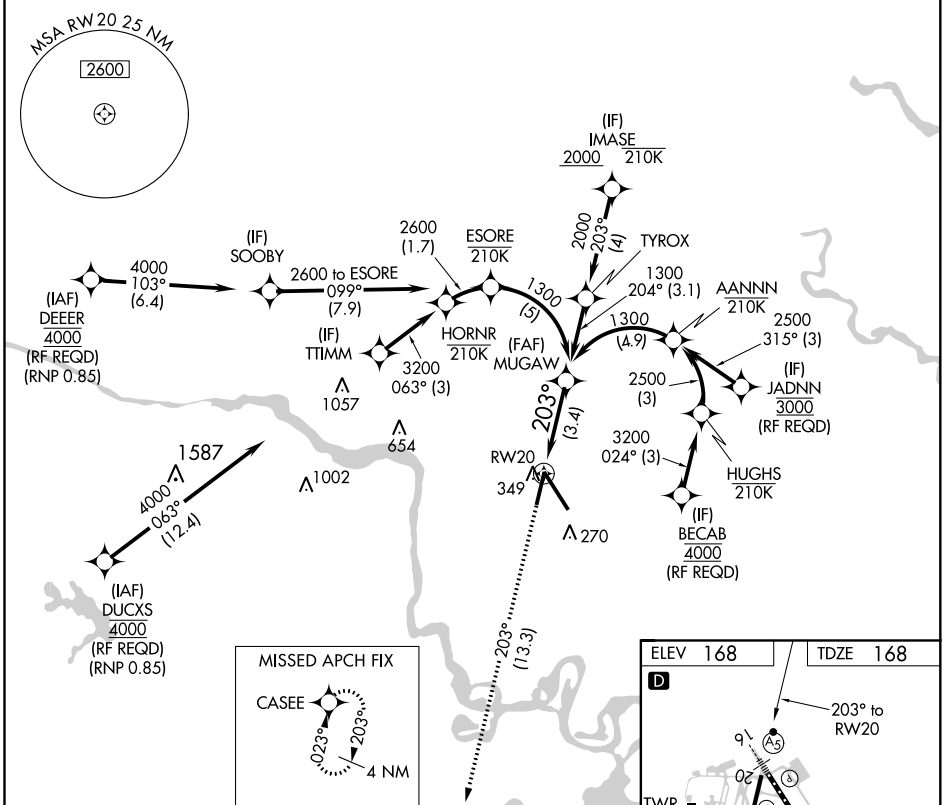
RNAV (RNP) Y RWY 20

RICHMOND INTL (RIC)

RNP AR APCH.
 ▽ For uncompensated Baro-VNAV systems, procedure NA below -11°C or above 54°C.

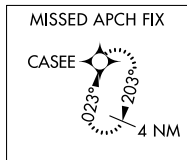
MISSED APPROACH: Climb to 2000 on track 203° CASEE and hold.

ATIS	POTOMAC APP CON	RICHMOND TOWER	GND CON	CLNC DEL
119.15 263.025	126.4 282.375 (001°-185°) 126.75 307.2 (186°-360°)	121.1 257.8	121.9 348.6	127.55 348.6



NE-3, 08 OCT 2020 to 05 NOV 2020

NE-3, 08 OCT 2020 to 05 NOV 2020



2000	CASEE	See planview for multiple IF locations.		
↑ tr 203°				
		MUGAW	1300	
			1300	GP 3.00° TCH 49
		3.4 NM		
CATEGORY	A	B	C	D
RNP 0.11 DA		505-1	337 (400-1)	
RNP 0.30 DA		613-1½	445 (500-1½)	
AUTHORIZATION REQUIRED				

