

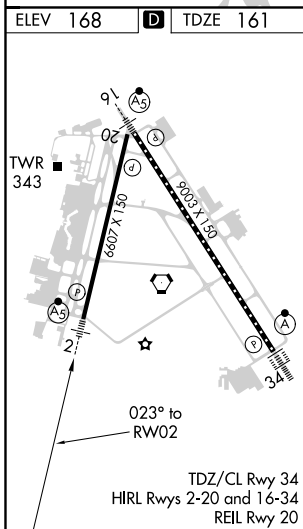
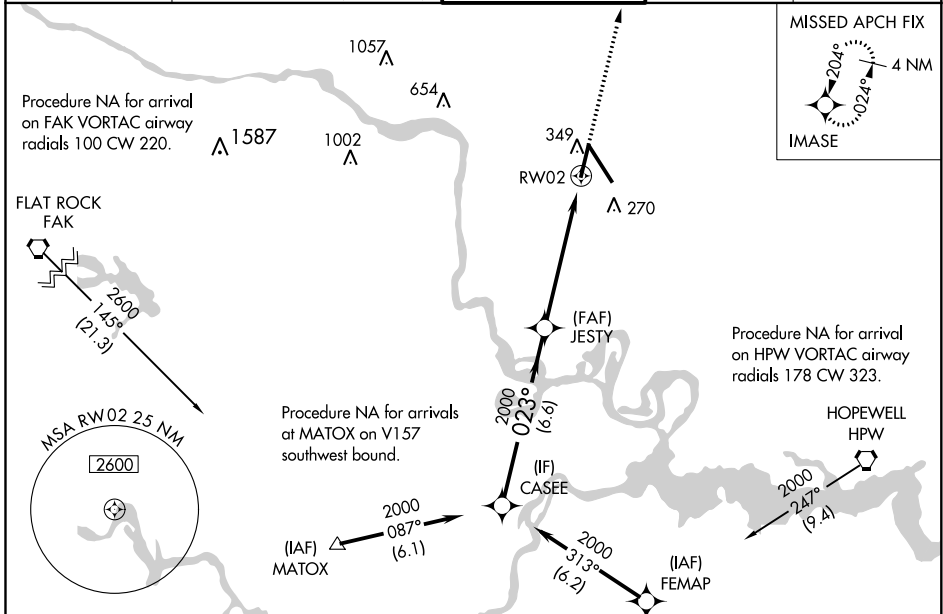
WAAS CH 72716 W02A	APP CRS 023°	Rwy Idg TDZE 161 Apt Elev 168	6607
--	------------------------	---	-------------

RNAV (GPS) Z RWY 2

RICHMOND INTL (RIC)

RNP APCH.	MALSR	MISSED APPROACH: Climb to 2000 direct IMASE and hold.
▼ For uncompensated Baro-VNAV systems, LNAV/VNAV NA below -11°C (13°F) or above 54°C (130°F). Rwy 2 helicopter visibility reduction below 3/4 SM NA.		

ATIS 119.15 263.025	POTOMAC APP CON 126.4 282.375 (001°-185°) 126.75 307.2 (186°-360°)	RICHMOND TOWER 121.1 257.8	GND CON 121.9 348.6	CLNC DEL 127.55 348.6
-------------------------------	--	--------------------------------------	-------------------------------	---------------------------------



ELEV 168	TDZE 161				
CASEE	JESTY				
2000	2000	* 1.3 NM to RW02 * LNAV only.			
GP 3.00° TCH 50	2000				
	6.6 NM	4.3 NM	1.3 NM		
CATEGORY	A	B	C	D	
LPV DA		457-3/4	296 (300-3/4)		
LNAV/VNAV DA		568-7/8	407 (400-7/8)		
LNAV MDA	620-3/4	459 (500-3/4)	620-1	459 (500-1)	
CIRCLING	660-1	492 (500-1)	700-1 1/2 532 (600-1 1/2)	720-2 552 (600-2)	

NE-3, 08 OCT 2020 to 05 NOV 2020

NE-3, 08 OCT 2020 to 05 NOV 2020