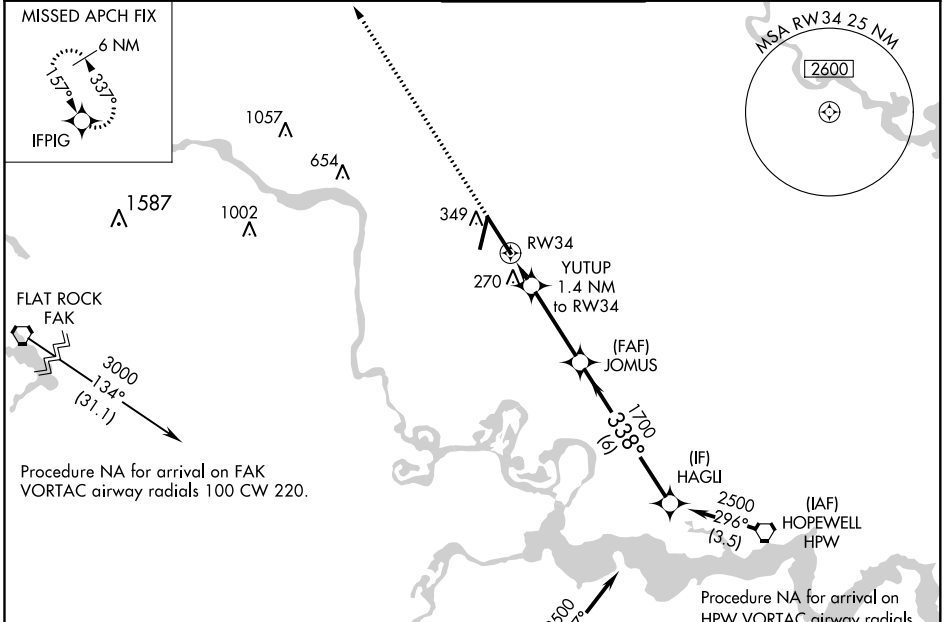


WAAS CH <b>97520</b> <b>W34A</b>	APP CRS <b>338°</b>	Rwy Idg TDZE <b>161</b> Apt Elev <b>168</b>	<b>9003</b>
--	------------------------	---	-------------

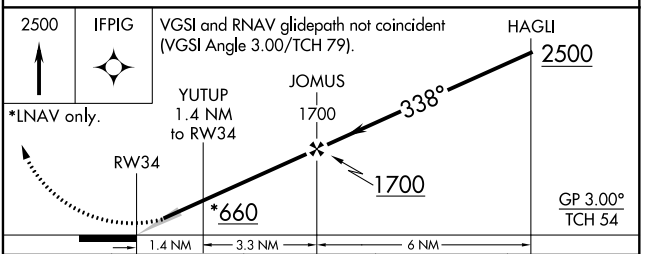
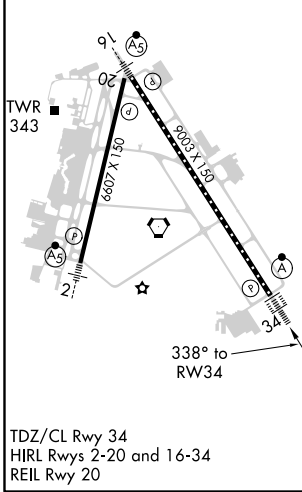
# RNAV (GPS) Z RWY 34

RICHMOND INTL (RIC)

RNP APCH.		ALSF-2 	MISSED APPROACH: Climb to 2500 direct IFPIG and hold.
▼ For uncompensated Baro-VNAV systems, LNAV/VNAV NA below -11°C or above 54°C. For inop ALS, increase LNAV/VNAV all Cats visibility to 1¼ SM and LNAV Cats C and D visibility to RVR 5500.		ATIS <b>119.15 263.025</b>	POTOMAC APP CON <b>126.4 282.375</b> (001°-185°) <b>126.75 307.2</b> (186°-360°)
RICHMOND TOWER <b>121.1 257.8</b>		GND CON <b>121.9 348.6</b>	CLNC DEL <b>127.55 348.6</b>



ELEV <b>168</b>	<b>D</b>	TDZE <b>161</b>
-----------------	----------	-----------------



CATEGORY	A	B	C	D
LPV DA		361/18	200 (200-½)	
LNAV/VNAV DA		530/37	369 (400-¾)	
LNAV MDA	520/24	359 (400-½)	520/30	359 (400-¾)
<b>C</b> CIRCLING	660-1	492 (500-1)	700-1½ 532 (600-1½)	720-2 552 (600-2)

NE-3, 08 OCT 2020 to 05 NOV 2020

NE-3, 08 OCT 2020 to 05 NOV 2020