

VORTAC RIC 114.1 Chan 88	APP CRS 041°	Rwy Idg TDZE Apt Elev	6607 162 167
---------------------------------------	------------------------	-----------------------------	---

VOR RWY 2

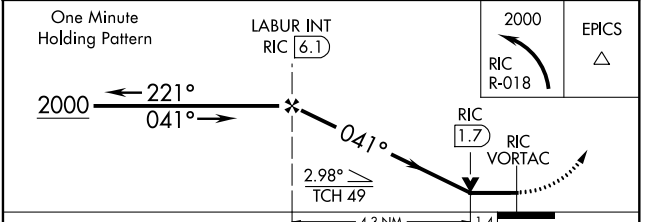
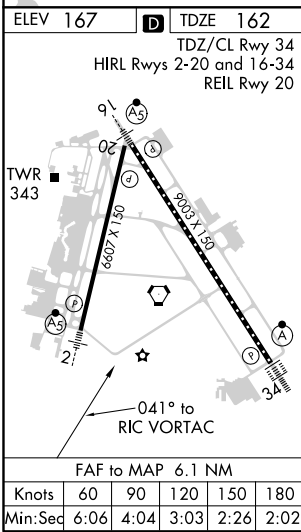
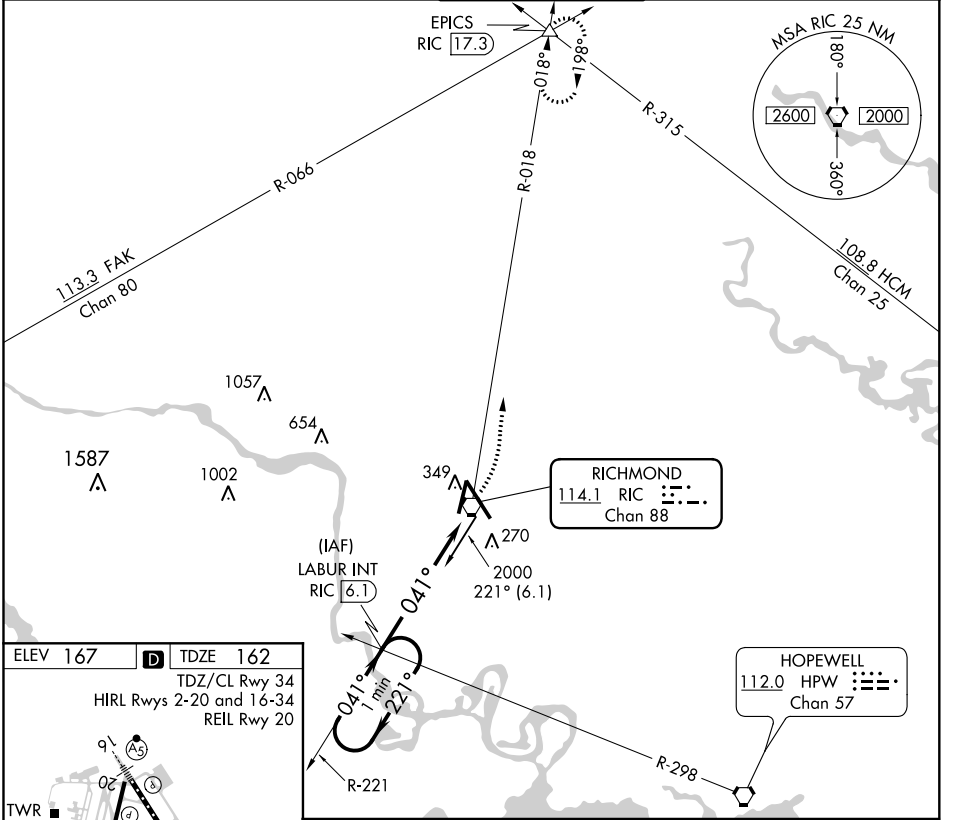
RICHMOND INTL (RIC)

▼ Rwy 2 helicopter visibility reduction below $\frac{3}{4}$ SM NA. For inop ALS, increase S-2 Cat A/B visibility to 1 SM, and Cat C/D to $1\frac{1}{2}$ SM.

MALSR

MISSED APPROACH: Climbing left turn to 2000 on RIC VORTAC R-018 to EPICS INT/RIC 17.3 DME and hold.

ATIS 119.15 263.025	POTOMAC APP CON 126.4 282.375 (001°-185°) 126.75 307.2 (186°-360°)	RICHMOND TOWER 121.1 257.8	GND CON 121.9 348.6	CLNC DEL 127.55 348.6
-------------------------------	--	--------------------------------------	-------------------------------	---------------------------------



CATEGORY	A	B	C	D
S-2	640- $\frac{3}{4}$ 478 (500- $\frac{3}{4}$)		640-1 478 (500-1)	
C CIRCLING	660-1 493 (500-1)		700-1 $\frac{1}{2}$ 533 (600-1 $\frac{1}{2}$)	720-2 553 (600-2)

NE-3, 08 OCT 2020 to 05 NOV 2020

NE-3, 08 OCT 2020 to 05 NOV 2020