

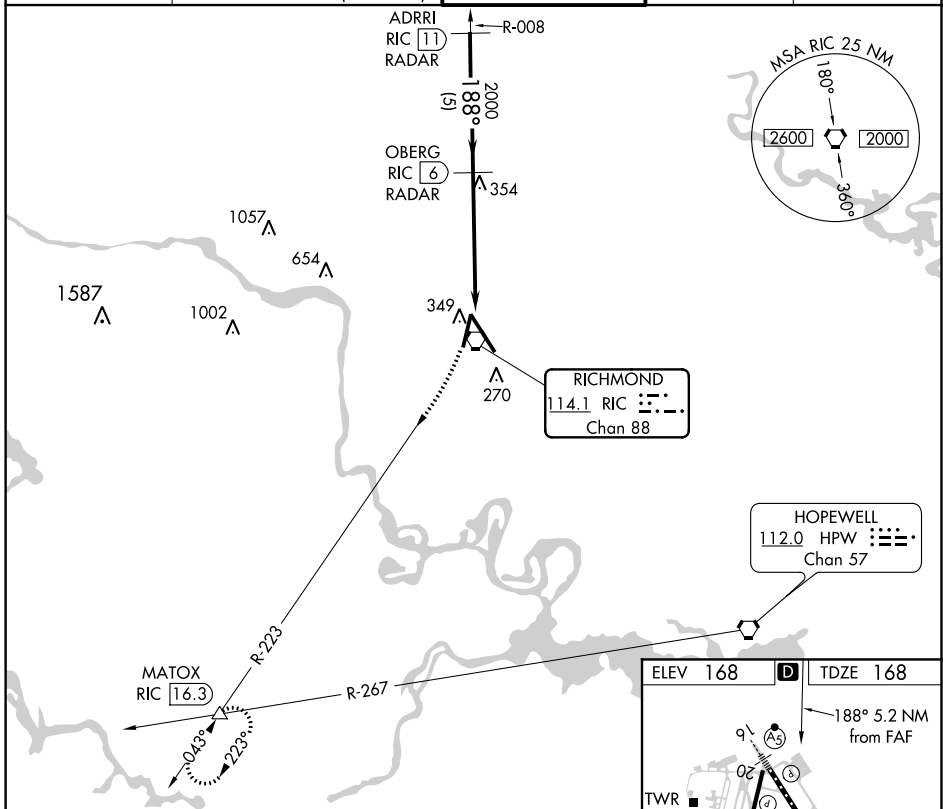
VORTAC RIC <b>114.1</b> Chan <b>88</b>	APP CRS <b>188°</b>	Rwy Idg TDZE <b>168</b> Apt Elev <b>168</b>	<b>6607</b>
--	------------------------	---	-------------

# VOR RWY 20

RICHMOND INTL (RIC)

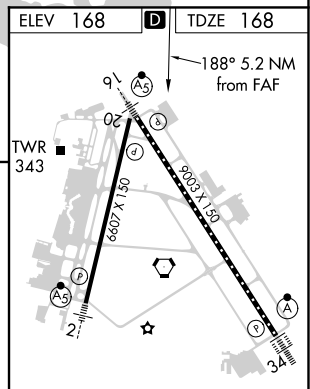
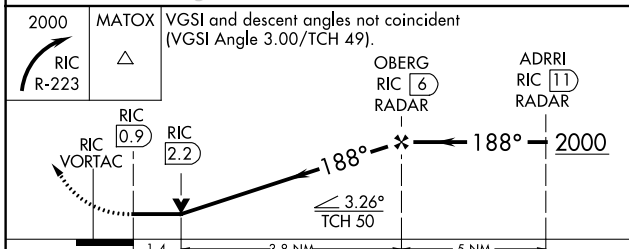
RADAR required for procedure entry. DME or RADAR required. MISSED APPROACH: Climbing right turn to 2000 on RIC R-223 to MATOX INT/RIC 16.3 DME and hold.

ATIS <b>119.15 263.025</b>	POTOMAC APP CON <b>126.4 282.375</b> (001°-185°) <b>126.75 307.2</b> (186°-360°)	RICHMOND TOWER <b>121.1 257.8</b>	GND CON <b>121.9 348.6</b>	CLNC DEL <b>127.55 348.6</b>
-------------------------------	--	--------------------------------------	-------------------------------	---------------------------------



NE-3, 08 OCT 2020 to 05 NOV 2020

NE-3, 08 OCT 2020 to 05 NOV 2020



2000	MATOX	VGSi and descent angles not coincident (VGSi Angle 3.00/TCH 49).	
RIC R-223	△	OBERG RIC 6 RADAR	ADRR RIC 11 RADAR
RIC 0.9	RIC 2.2	188°	2000
RIC VORTAC		≤ 3.26° TCH 50	
	1.4	3.8 NM	5 NM
CATEGORY	A	B	C
S-20	660-1 492 (500-1)		660-1 3/8 492 (500-1 3/8)
CIRCLING	660-1 492 (500-1)		700-1 1/2 532 (600-1 1/2) 720-2 552 (600-2)

TDZ/CL Rwy 34		188° 5.2 NM from FAF	
HIRL Rwys 2-20 and 16-34		TWR 343	
REIL Rwy 20		6607 X 130	
FAF to MAP 5.2 NM			
Knots	60	90	120 150 180
Min:Sec	5:12	3:28	2:36 2:05 1:44