

VORTAC RIC 114.1 Chan 88	APP CRS 323°	Rwy Idg 9003 TDZE 161 Apt Elev 167
--	------------------------	---

VOR RWY 34

RICHMOND INTL (RIC)

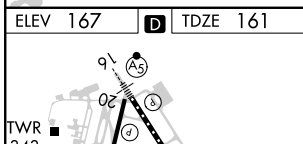
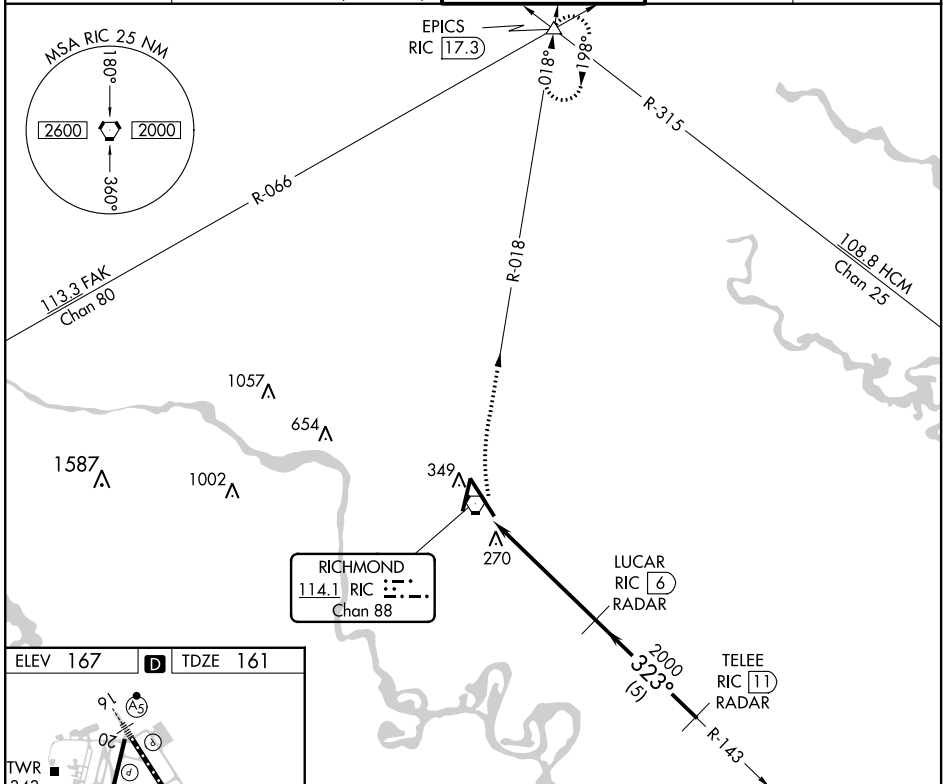
DME or RADAR required. RADAR required for procedure entry.

ALSF-2

MISSED APPROACH: Climbing right turn to 2000 via RIC R-018 to EPICS INT and hold.

For inop ALS, increase S-34 Cat C/D visibility to RVR 5500.

ATIS 119.15 263.025	POTOMAC APP CON 126.4 282.375 (001°-185°) 126.75 307.2 (186°-360°)	RICHMOND TOWER 121.1 257.8	GND CON 121.9 348.6	CLNC DEL 127.55 348.6
-------------------------------	--	--------------------------------------	-------------------------------	---------------------------------



2000 RIC R-018	EPICS △	VGSI and descent angles not coincident (VGSI Angle 3/00/TCH 79).		
		LUCAR RIC [6] RADAR	TELEE RIC [11] RADAR	
RIC VORTAC RIC [0.8]		RIC [1.7]	323° 2000	
323° 5.3 NM from FAF		≤ 3.19° TCH 55		
CATEGORY	A	B	C	D
S-34	540/24 379 (400-½)	540/40 379 (400-¾)	540/50 379 (400-1)	
CIRCLING	660-1 493 (500-1)	700-1½ 533 (600-1½)	720-2 553 (600-2)	

NE-3, 08 OCT 2020 to 05 NOV 2020

NE-3, 08 OCT 2020 to 05 NOV 2020