

20086

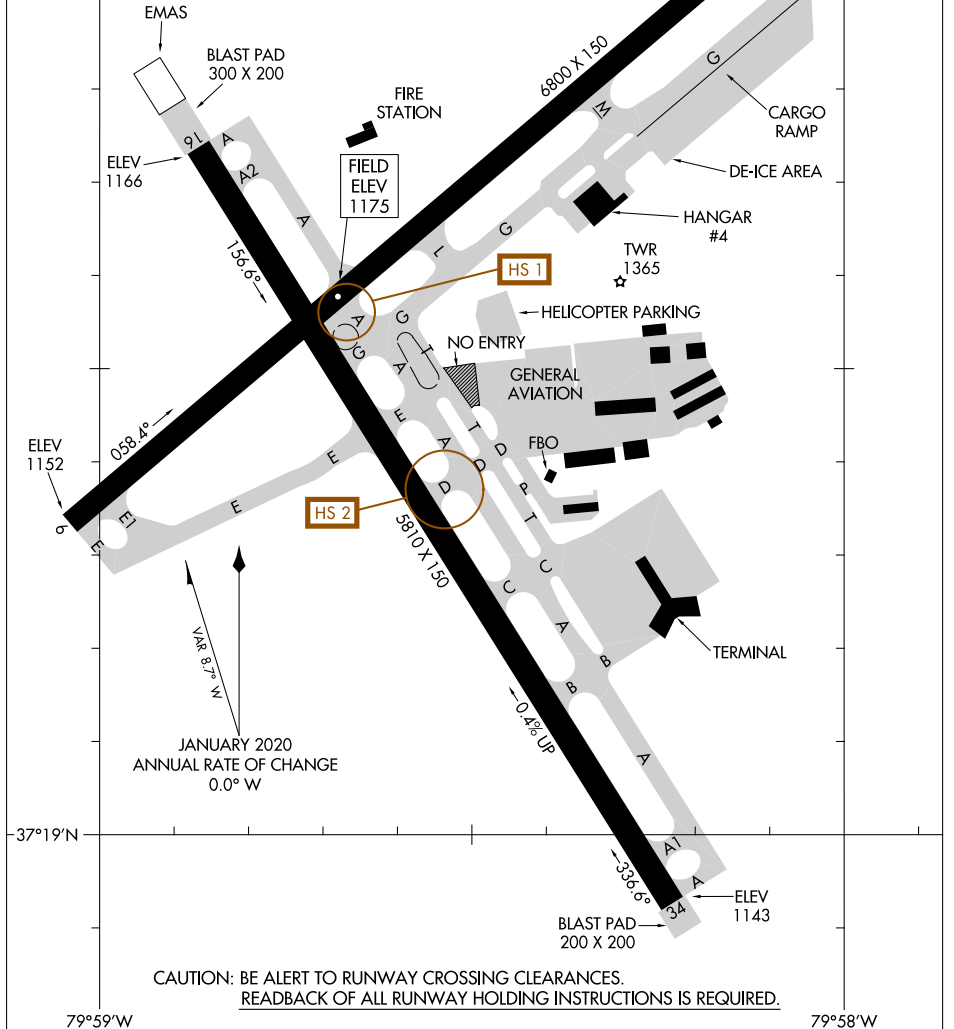
# AIRPORT DIAGRAM

ROANOKE-BLACKSBURG RGNL/WOODRUM FIELD (R.O.A)  
AL-349 (FAA) ROANOKE, VIRGINIA

ATIS  
132.375  
ROANOKE TOWER  
118.3 257.8  
GND CON  
121.9 257.8  
CLNC DEL  
119.7  
**D**

RWY 06-24  
PCN 76 F/B/X/T  
S-150, D-200, 2D-310  
RWY 16-34  
PCN 54 F/A/X/T  
S-150, D-200, 2D-310

37°20'N



CAUTION: BE ALERT TO RUNWAY CROSSING CLEARANCES.  
REARBACK OF ALL RUNWAY HOLDING INSTRUCTIONS IS REQUIRED.

79°59'W

79°58'W

# AIRPORT DIAGRAM

20086

ROANOKE-BLACKSBURG RGNL/WOODRUM FIELD (R.O.A)  
ROANOKE, VIRGINIA

NE-3, 08 OCT 2020 to 05 NOV 2020

NE-3, 08 OCT 2020 to 05 NOV 2020