

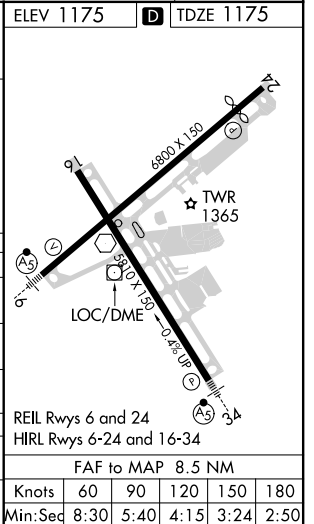
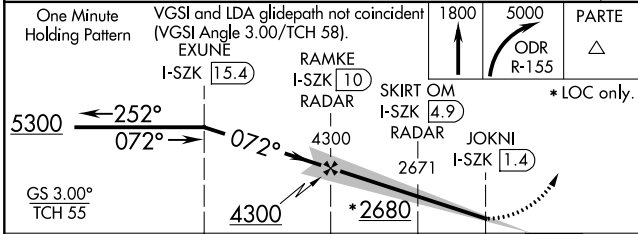
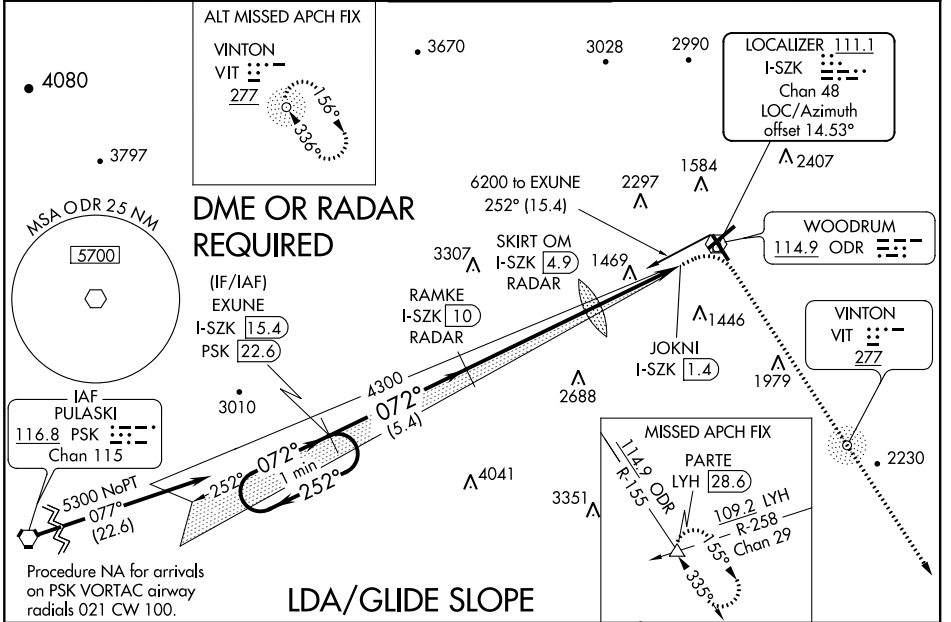
LOC/DME I-SZK 111.1 Chan 48	APP CRS 072°	Rwy ldg TDZE 6800 1175 Apt Elev 1175
---	------------------------	--

LDA Y RWY 6

ROANOKE-BLACKSBURG RGNL/WOODRUM FIELD (R.O.A)

<p>▼ Inop table does not apply to S-LDA 6 Cats C and D. Circling NA NW of Rwy 6-24. For inop MALSR, increase S-LDA/GS 6 all Cats visibility to 1½.</p> <p>⚠ -13° C</p>	<p>MALSR</p>	<p>MISSED APPROACH: Climb to 1800 then climbing right turn to 5000 on ODR VOR R-155 to PARTE INT/LYH 28.6 DME and hold, continue climb-in-hold to 5000.</p>
--	--------------	---

<p>ATIS 132.375</p>	<p>ROANOKE APP CON 126.9 339.8</p>	<p>ROANOKE TOWER 118.3 257.8</p>	<p>GND CON 121.9 257.8</p>	<p>CLNC DEL 119.7</p>
--------------------------------	---	---	---------------------------------------	----------------------------------



CATEGORY	A	B	C	D
S-LDA/GS 6	1615-1½		440 (500-1½)	
S-LDA 6	2680-1	1505 (1600-1)	2680-3	1505 (1600-3)
Ⓢ CIRCLING	2680-1½ 1505 (1600-1½)	2680-1½ 1505 (1600-1½)	2680-3 1505 (1600-3)	2800-3 1625 (1700-3)
SKIRT OM/DME/RADAR				
S-LDA 6	1720-1	545 (600-1)	1720-1½	545 (600-1½)
Ⓢ CIRCLING	1720-1½	545 (600-1½)	2420-3 1245 (1300-3)	2800-3 1625 (1700-3)

LDA Y RWY 6

NE-3, 08 OCT 2020 to 05 NOV 2020

NE-3, 08 OCT 2020 to 05 NOV 2020