

LOC/DME I-SZK <b>111.1</b> Chan 48	APP CRS <b>072°</b>	Rwy Idg TDZE <b>1175</b> Apt Elev <b>1175</b>
--	------------------------	---

# LDA Z RWY 6

ROANOKE-BLACKSBURG RGNL/WOODRUM FIELD (R.O.A)

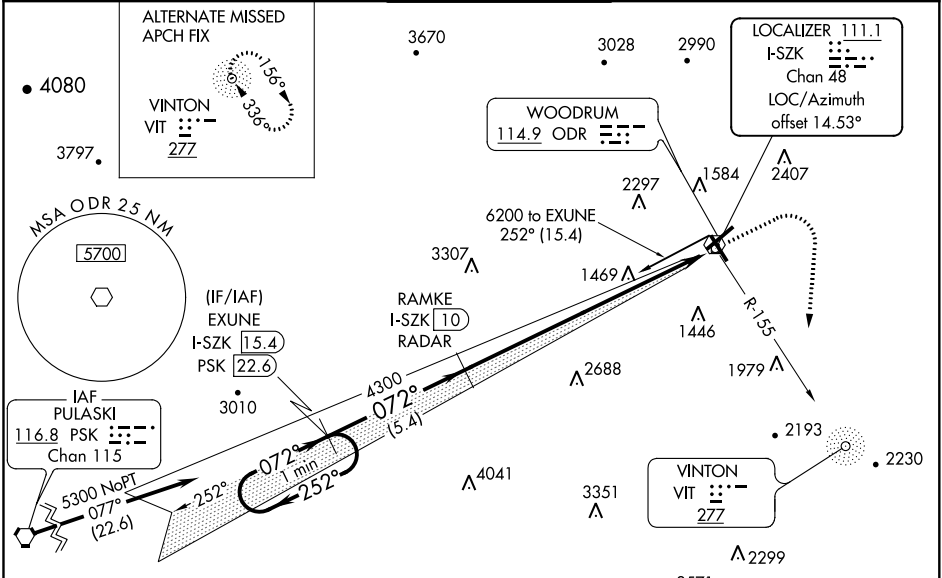
**M** For inop MALSRS, increase S-LDA/GS 6 all Cats visibility to 7/8 mile. Missed approach requires a minimum climb of 350 feet per NM to 3600, if unable to meet climb gradient, see LDA Y Rwy 6.

**13°C**

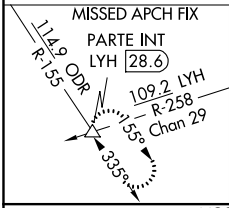
**MALSRS**

**MISSED APPROACH:** Climb to 1800 then climbing right turn to 5000 on ODR VOR R-155 to PARTE INT/LYH 28.6 DME and hold, continue climb-in-hold to 5000.

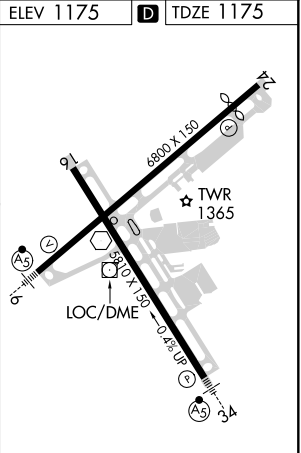
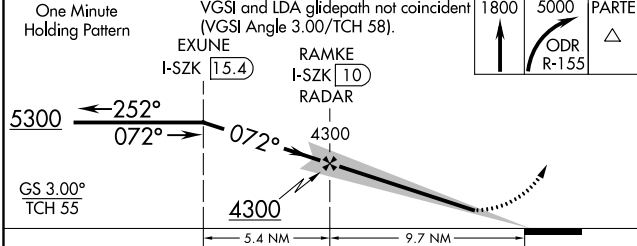
ATIS <b>132.375</b>	ROANOKE APP CON <b>126.9 339.8</b>	ROANOKE TOWER <b>118.3 257.8</b>	GND CON <b>121.9 257.8</b>	CLNC DEL <b>119.7</b>
------------------------	---------------------------------------	-------------------------------------	-------------------------------	--------------------------



Procedure NA for arrivals on PSK  
VORTAC airway radials 021 CW 100.



## LDA/GLIDE SLOPE DME OR RADAR REQUIRED



CATEGORY	A	B	C	D
S-LDA/GS 6		1425-3/4	250 (300-3/4)	

REIL Rwy 6 and 24  
HIRL Rwy 6-24 and 16-34

# LDA Z RWY 6

NE-3, 08 OCT 2020 to 05 NOV 2020

NE-3, 08 OCT 2020 to 05 NOV 2020