

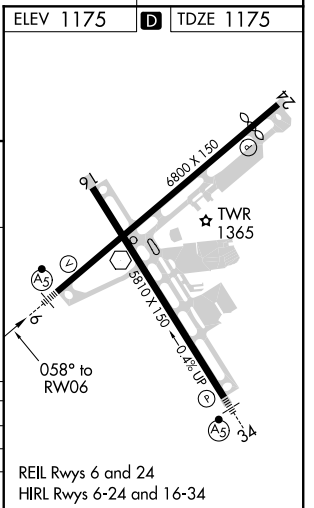
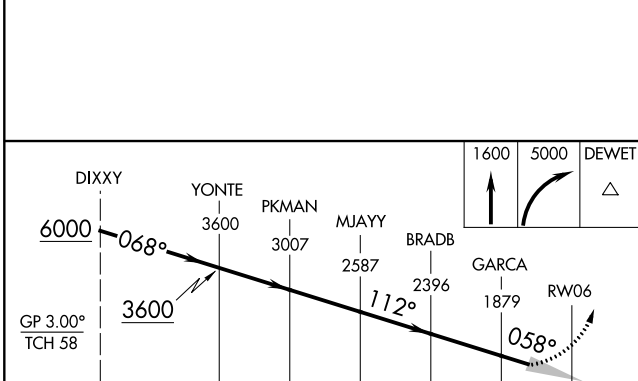
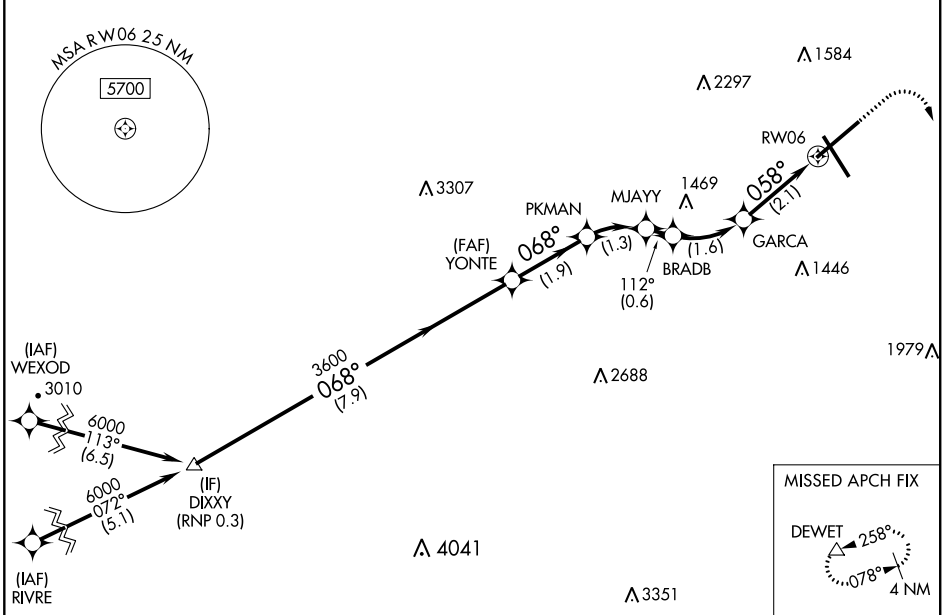
APP CRS	Rwy Idg	<b>6800</b>
<b>058°</b>	TDZE	<b>1175</b>
	Apt Elev	<b>1175</b>

# RNAV (RNP) Z RWY 6

ROANOKE-BLACKSBURG RGNL/WOODRUM FIELD (R.O.A)

RNP AR APCH. RF required.		MALSR	MISSED APPROACH: (Do not exceed 240K until DEWET) Climb to 1600 then climbing right turn to 5000 direct DEWET and hold, continue climb-in-hold to 5000. *Missed approach requires minimum climb of 370 feet per NM to 2900.
-13°C For uncompensated Baro-VNAV systems, procedure NA below -14°C or above 54°C.			

ATIS <b>132.375</b>	ROANOKE APP CON <b>126.9 339.8</b>	ROANOKE TOWER <b>118.3 257.8</b>	GND CON <b>121.9 257.8</b>	CLNC DEL <b>119.7</b>
------------------------	---------------------------------------	-------------------------------------	-------------------------------	--------------------------



CATEGORY	A	B	C	D
RNP 0.20 DA*		1425-1/2	250 (300-1/2)	
RNP 0.30 DA		1605-3/4	430 (500-3/4)	

## AUTHORIZATION REQUIRED

REIL Rwy's 6 and 24  
HIRL Rwy's 6-24 and 16-34

NE-3, 08 OCT 2020 to 05 NOV 2020

NE-3, 08 OCT 2020 to 05 NOV 2020