

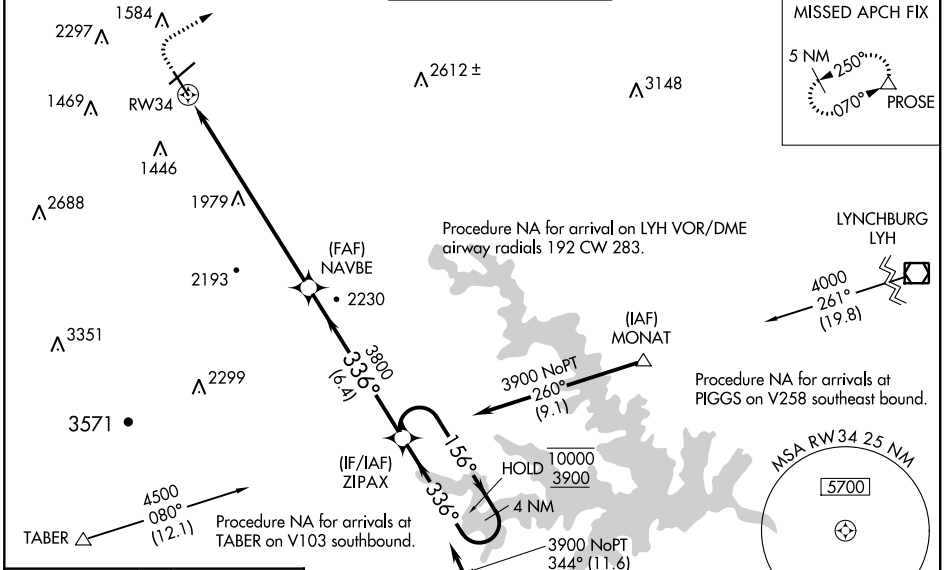
WAAS CH <b>70722</b> <b>W34A</b>	APP CRS <b>336°</b>	Rwy Idg TDZE Apt Elev	<b>5810</b> <b>1160</b> <b>1175</b>
--	------------------------	-----------------------------	---

# RNAV (GPS) Y RWY 34

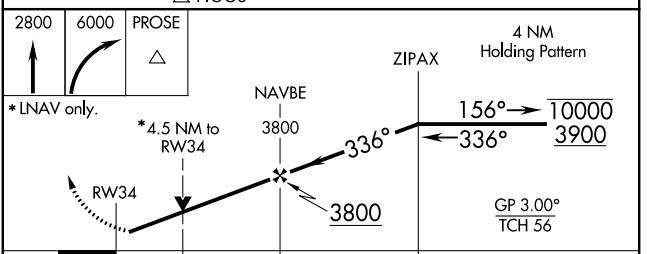
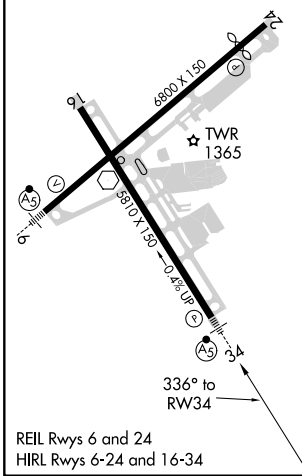
ROANOKE-BLACKSBURG RGNL/WOODRUM FIELD (R.O.A)

RNP APCH.	MALS R	MISSED APPROACH: (Do not exceed 240K until PROSE) Climb to 2800 then climbing right turn to 6000 direct PROSE and hold, continue climb-in-hold to 6000. # Missed approach requires minimum climb of 405 feet per NM to 3900.
<p><b>▼</b> Circling NA northwest of Rwy 6-24. Rwy 34 helicopter visibility reduction below <math>\frac{3}{4}</math> SM NA. For uncompensated Baro-VNAV systems, LNAV/VNAV NA below -14°C or above 54°C. Inop table does not apply to LPV, LNAV/VNAV or LNAV Cat C/D. For inop ALS, increase LPV# all Cats visibility to <math>1\frac{1}{2}</math> SM.</p>		

ATIS <b>132.375</b>	ROANOKE APP CON <b>126.9 339.8</b>	ROANOKE TOWER <b>118.3 257.8</b>	GND CON <b>121.9 257.8</b>	CLNC DEL <b>119.7</b>
------------------------	---------------------------------------	-------------------------------------	-------------------------------	--------------------------



ELEV 1175	<b>D</b>	TDZE 1160
-----------	----------	-----------



CATEGORY	A	B	C	D
LPV DA #		1560- $\frac{3}{4}$	400 (400- $\frac{3}{4}$ )	
LPV DA		2568-5	1408 (1400-5)	
LNAV/VNAV DA		2300-4	1140 (1200-4)	
LNAV MDA	2640- $\frac{3}{4}$ 1480 (1500- $\frac{3}{4}$ )	2640-1 1480 (1500-1)	2640-3	1480 (1500-3)
<b>C</b> CIRCLING	2640-1 $\frac{1}{4}$ 1465 (1500-1 $\frac{1}{4}$ )	2640-1 $\frac{1}{2}$ 1465 (1500-1 $\frac{1}{2}$ )	2640-3 1465 (1500-3)	2820-3 1645 (1700-3)

NE-3, 08 OCT 2020 to 05 NOV 2020

NE-3, 08 OCT 2020 to 05 NOV 2020