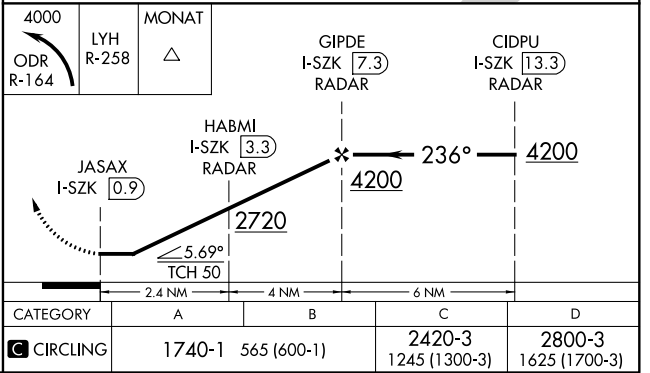
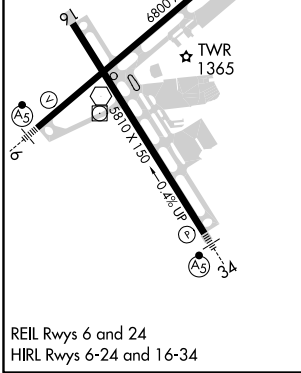
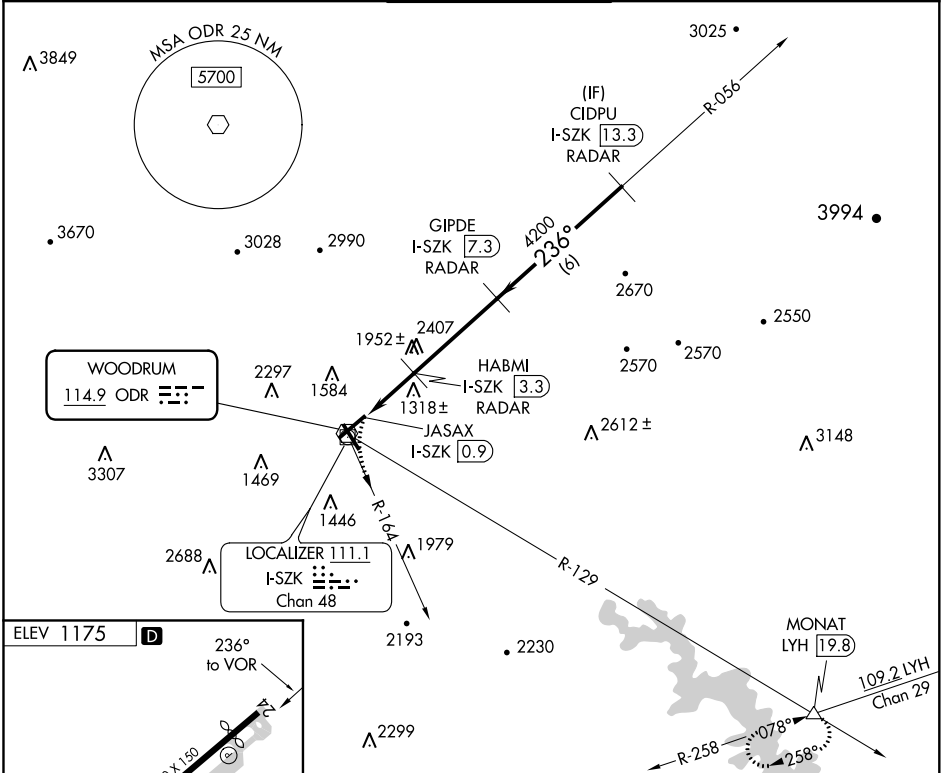


VOR ODR 114.9	APP CRS 236°	Rwy ldg TDZE Apt Elev N/A N/A 1175
-------------------------	------------------------	--

VOR/DME-A

ROANOKE-BLACKSBURG RGNL/WOODRUM FIELD (R.O.A)

RADAR required.		MISSED APPROACH: Climbing left turn to 4000 on ODR VOR R-164 and LYH VOR/DME R-258 to MONAT/LYH 19.8 DME and hold.		
<p>Circling NA northwest of Rwy 6-24. DME from I-SZK LDA. Simultaneous reception of ODR VOR and I-SZK DME required.</p> <p> -13°C</p>				
ATIS 132.375	ROANOKE APP CON 126.9 339.8	ROANOKE TOWER 118.3 257.8	GND CON 121.9 257.8	CLNC DEL 119.7



NE-3, 08 OCT 2020 to 05 NOV 2020

NE-3, 08 OCT 2020 to 05 NOV 2020

VOR/DME-A