

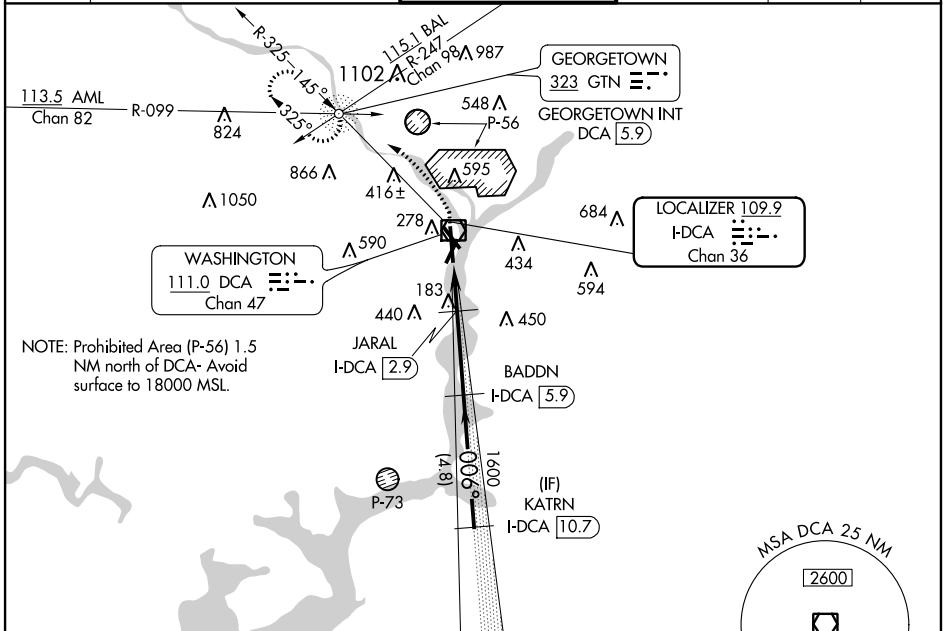
LOC/DME I-DCA	APP CRS	Rwy Idg
<b>109.9</b>	<b>006°</b>	<b>6869</b>
Chan <b>36</b>		TDZE <b>14</b>
		Apt Elev <b>15</b>

# COPTER ILS or LOC/DME RWY 1

## RONALD REAGAN WASHINGTON NATIONAL (DCA)

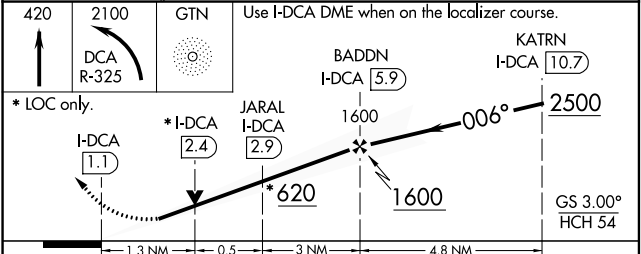
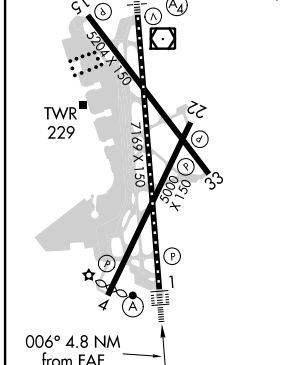
NA	ALS-F-2	MISSED APPROACH: Climb to 420 then climbing left turn to 2100 on DCA VOR/DME R-325 to GTN NDB/INT/DCA 5.9 DME and hold.

D-ATIS	POTOMAC APP CON	WASHINGTON TOWER	GND CON	CLNC DEL	CPDLC
<b>132.65</b>	<b>119.85 239.25</b> (WEST/SOUTH)	<b>119.1 257.6</b>	<b>121.7 257.6</b>	<b>128.25</b>	
	<b>124.2 360.8</b> (EAST)				



NOTE: Prohibited Area (P-56) 1.5 NM north of DCA- Avoid surface to 18000 MSL.

ELEV 15	<b>D</b> TDZE 14
REIL Rwys 4, 22, 15 and 33	
HIRL Rwys 1-19 and 15-33	
MIRL Rwy 4-22	
TDZ/CL Rwy 1	



CATEGORY	COPTER	
H-ILS 1	114/12	100 (100-1/8)
H-LOC 1	480/24	466 (500-1/2)
H-ILS 1	CAT II RA 106	

### COPTER ILS CATEGORY II - SPECIAL AIRCREW & AIRCRAFT CERTIFICATION REQUIRED

NE-3, 08 OCT 2020 to 05 NOV 2020

NE-3, 08 OCT 2020 to 05 NOV 2020