

DOCTR FOUR DEPARTURE (RNAV)

AL-443 (FAA)

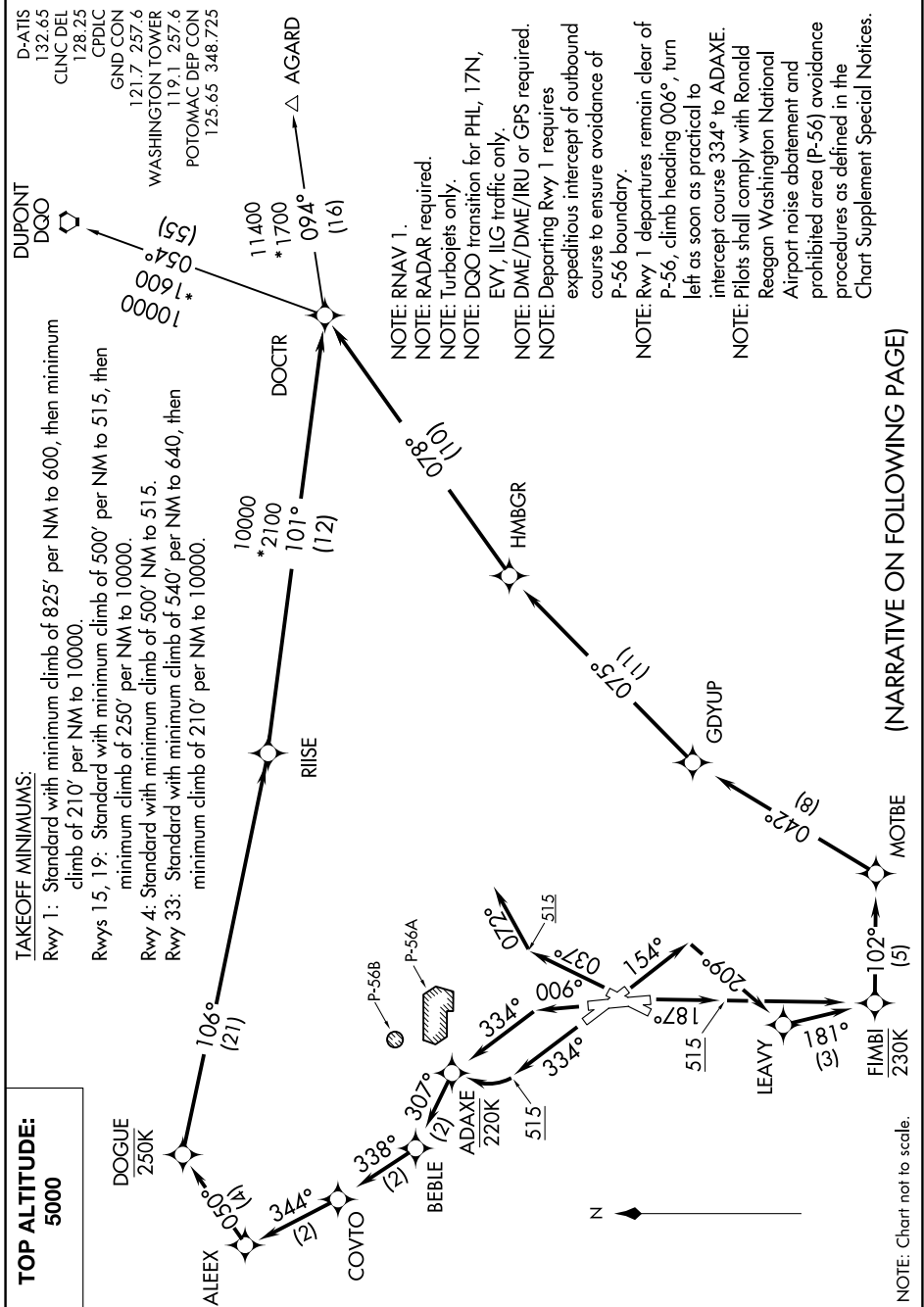
WASHINGTON, DC

NE-3, 08 OCT 2020 to 05 NOV 2020

TOP ALTITUDE:
5000

TAKEOFF MINIMUMS:

- Rwy 1: Standard with minimum climb of 825' per NM to 600, then minimum climb of 210' per NM to 10000.
- Rwys 15, 19: Standard with minimum climb of 500' per NM to 515, then minimum climb of 250' per NM to 10000.
- Rwy 4: Standard with minimum climb of 500' NM to 515.
- Rwy 33: Standard with minimum climb of 540' per NM to 640, then minimum climb of 210' per NM to 10000.



NOTE: Chart not to scale.

(NARRATIVE ON FOLLOWING PAGE)

DOCTR FOUR DEPARTURE (RNAV)

(DOCTR4.DOCTR) 29MAR18

WASHINGTON, DC

RONALD REAGAN WASHINGTON NATIONAL (DCA)

NE-3, 08 OCT 2020 to 05 NOV 2020