

FRDMM FIVE ARRIVAL (RNAV) Arrival Routes

WASHINGTON, DC

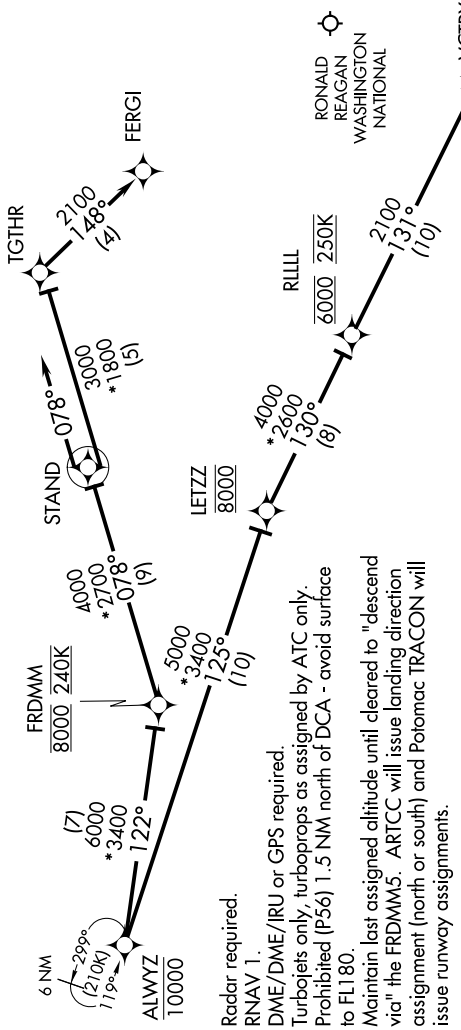
NE-3, 08 OCT 2020 to 05 NOV 2020

POTOMAC APP CON
118.675 323.175
DCA D-ATIS
132.65
KADW D-ATIS
133.675 251.05
KDAAA AAF ATIS
128.175

P-568

P-56A

JOINT BASE
ANDREWS



ARRIVAL ROUTE DESCRIPTION

LANDING DCA RWYS 1, 4, 33, and ADW RWYS 1L/R and LANDING DAA: From ALWYZ on track 125° to cross LETZZ at 8000, then on track 130° to cross RLLLL at 6000 and at 250K, then on track 131° to VCTRY, then on track 189° to HEROQ, then on track 189°. Expect radar vectors to final approach course.

LANDING DCA RWYS 15, 19, 22: From ALWYZ on track 122° to cross FRDMM at 8000 and 240K, then on track 078° to STAND, then on track 078° to TGTHR, then on track 148° to FERGI, expect LDA/DME RWY 19, RNAV (RNP) RWY 19, RIVER VISUAL RWY 19 or radar vectors to final approach course.

LANDING ADW RWYS 19L/R: From ALWYZ on track 122° to cross FRDMM at 8000 and at 240K, then on track 078° to STAND, then on track 078°. Expect radar vectors to final approach course.

- NOTE: Radar required.
- NOTE: RNAV 1.
- NOTE: DME/DME/IRU or GPS required.
- NOTE: Turboprops only, turboprops as assigned by ATC only.
- NOTE: Prohibited (P56) 1.5 NM north of DCA - avoid surface to FL180.
- NOTE: Maintain last assigned altitude until cleared to "descend via" the FRDMM5. ARTCC will issue landing direction assignment (north or south) and Potomac TRACON will issue runway assignments.

NOTE: Chart not to scale.

FRDMM FIVE ARRIVAL (RNAV) Arrival Routes

WASHINGTON, DC

NE-3, 08 OCT 2020 to 05 NOV 2020