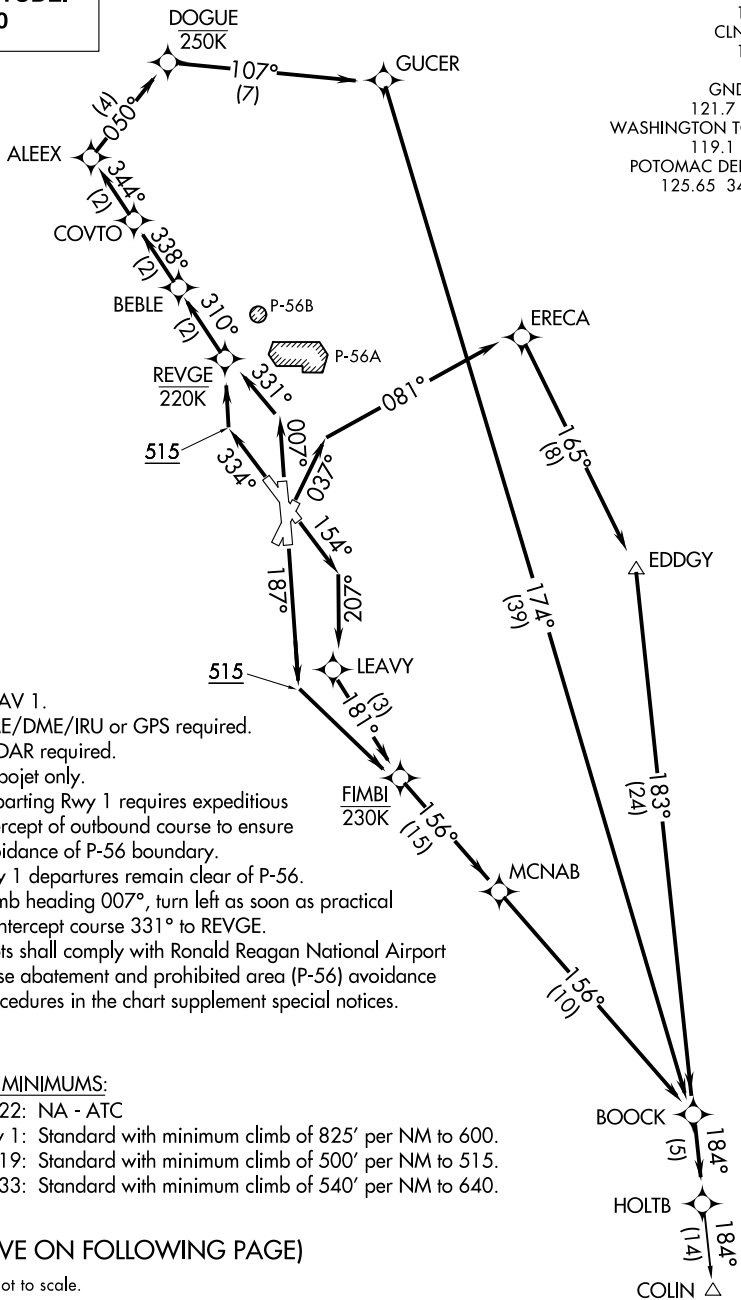


**TOP ALTITUDE:  
5000**

D-ATIS  
132.65  
CLNC DEL  
128.25  
CPDLC  
GND CON  
121.7 257.6  
WASHINGTON TOWER  
119.1 257.6  
POTOMAC DEP CON  
125.65 348.725



- NOTE: RNAV 1.
- NOTE: DME/DME/IRU or GPS required.
- NOTE: RADAR required.
- NOTE: Turbojet only.
- NOTE: Departing Rwy 1 requires expeditious intercept of outbound course to ensure avoidance of P-56 boundary.
- NOTE: Rwy 1 departures remain clear of P-56. Climb heading 007°, turn left as soon as practical to intercept course 331° to REVGE.
- NOTE: Pilots shall comply with Ronald Reagan National Airport noise abatement and prohibited area (P-56) avoidance procedures in the chart supplement special notices.

TAKEOFF MINIMUMS:

- Rwy 22: NA - ATC
- Rwy 1: Standard with minimum climb of 825' per NM to 600.
- Rwy 4, 15, 19: Standard with minimum climb of 500' per NM to 515.
- Rwy 33: Standard with minimum climb of 540' per NM to 640.

(NARRATIVE ON FOLLOWING PAGE)

NOTE: Chart not to scale.

NE-3, 08 OCT 2020 to 05 NOV 2020

NE-3, 08 OCT 2020 to 05 NOV 2020