

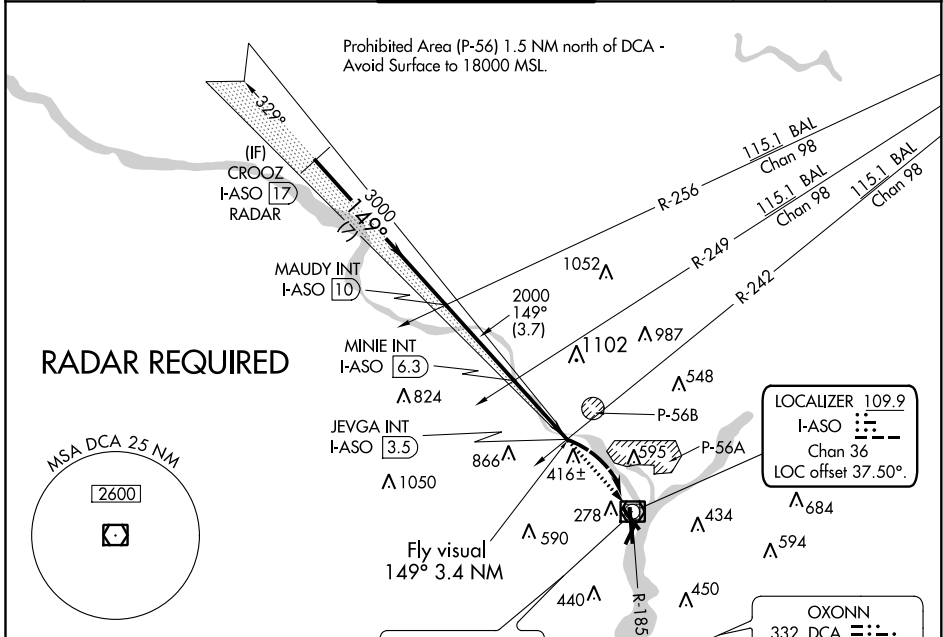
LOC/DME I-ASO <b>109.9</b> Chan <b>36</b>	APP CRS <b>149°</b>	Rwy Idg TDZE Apt Elev <b>6869</b> <b>13</b> <b>14</b>
---	------------------------	--

# LDA Y RWY 19

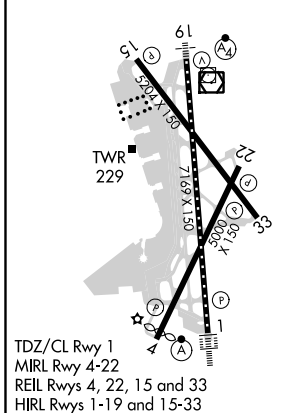
RONALD REAGAN WASHINGTON NATIONAL (DCA)

<b>⚠</b> <b>⚠</b> Inoperative table does not apply. Circling NA northeast of Rwy 15-33. ADF or DME required.	MALSF <b>Ⓜ</b>	MISSED APPROACH: Climb to 1800 direct DCA VOR/DME and on DCA VOR/DME R-185 to OXONN NDB/DCA 5.6 DME and hold.
--	-------------------	---

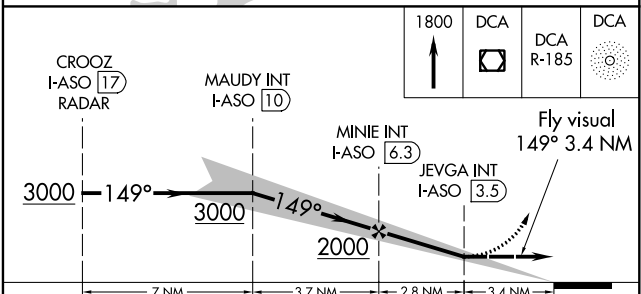
D-ATIS <b>132.65</b>	POTOMAC APP CON <b>119.85 239.25</b> (WEST/SOUTH) <b>124.2 360.8</b> (EAST)	WASHINGTON TOWER <b>119.1 257.6</b>	GND CON <b>121.7 257.6</b>	CLNC DEL <b>128.25</b>	CPDLC
-------------------------	---	--	-------------------------------	---------------------------	-------



ELEV 14	<b>D</b>	TDZE 13
---------	----------	---------



WASHINGTON <b>111.0</b> DCA Chan 47	OXONN <b>332</b> DCA Chan 56	OXONN DCA <b>5.6</b>
--	---------------------------------	-------------------------



FAF to MAP 2.8 NM					CATEGORY	A	B	C	D
Knots	60	90	120	150	180	S-LDA 19 1100-3 1087 (1100-3)			
Min:Sec	2:48	1:52	1:24	1:07	0:56	<b>C</b> CIRCLING 1100-3 1086 (1100-3)			

NE-3, 08 OCT 2020 to 05 NOV 2020

NE-3, 08 OCT 2020 to 05 NOV 2020