

LOC/DME I-VVWH	APP CRS	Rwy Idg	6869
108.5	147°	TDZE	13
Chan 22		Apt Elev	14

LDA Z RWY 19

RONALD REAGAN WASHINGTON NATIONAL (DCA)

⚠ Inop table does not apply. Circling NA northeast of Rwy 15-33. Rwy 19 helicopter visibility reduction below 1 SM NA. DME required.

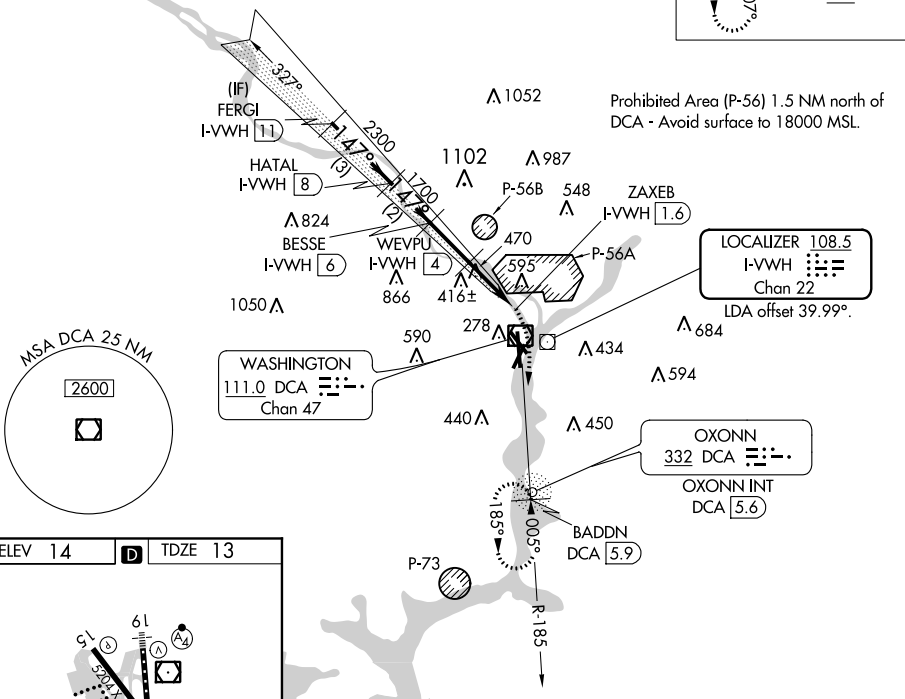
MALSF
MISSED APPROACH: Climbing right turn to 3000 on DCA VOR/DME R-185 to BADDN/DCA VOR/DME 5.9 DME and hold, continue climb-in-hold to 3000.

D-ATIS 132.65	POTOMAC APP CON 119.85 239.25 (WEST/SOUTH) (EAST)	WASHINGTON TOWER 119.1 257.6	GND CON 121.7 257.6	CLNC DEL 128.25	CPDLC
-------------------------	---	--	-------------------------------	---------------------------	-------

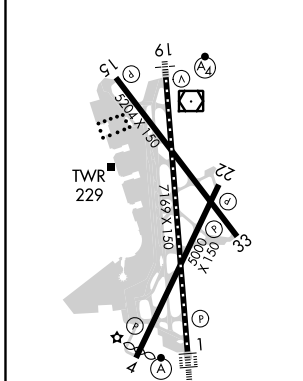
ALTERNATE MISSED APCH FIX



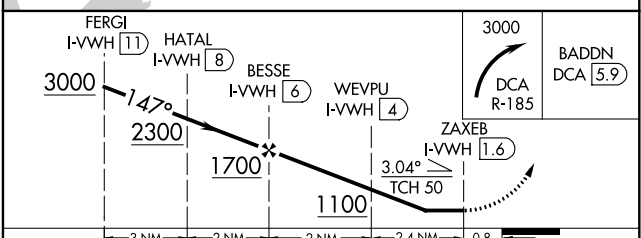
RADAR REQUIRED



ELEV 14	D	TDZE 13
---------	----------	---------



TDZ/CL Rwy 1
 MIRL Rwy 4-22
 REIL Rwys 4, 22, 15 and 33
 HIRL Rwys 1-19 and 15-33



CATEGORY	A	B	C	D
S-19	720/55	707 (800-1)	720-2	707 (800-2)
C CIRCLING	720-1	706 (800-1)	840-1½ 826 (900-1½)	900-3 886 (900-3)

NE-3, 08 OCT 2020 to 05 NOV 2020

NE-3, 08 OCT 2020 to 05 NOV 2020