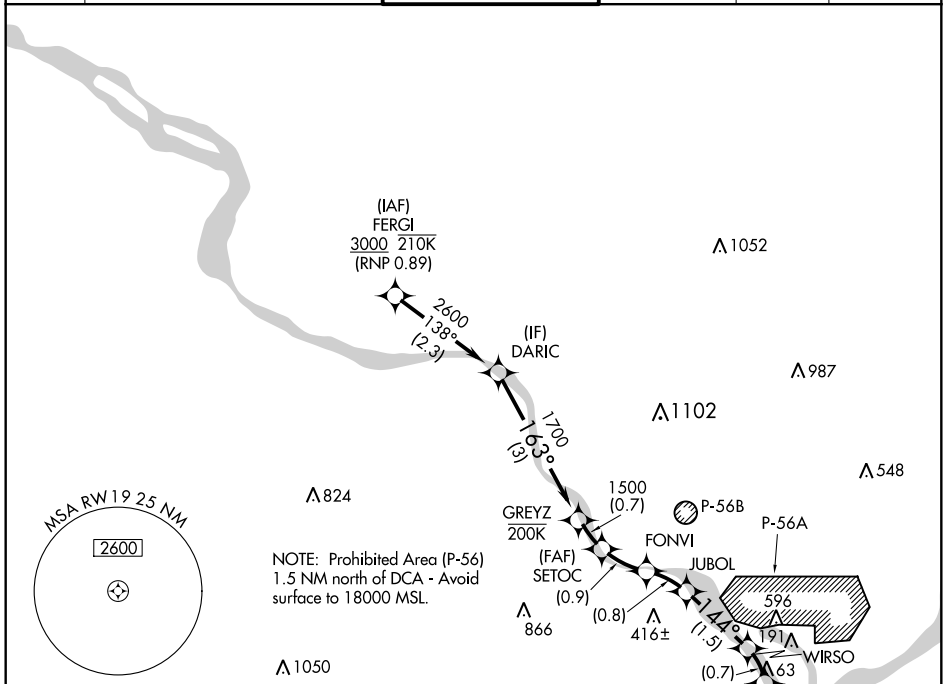


APP CRS	Rwy Idg	<b>6869</b>
<b>187°</b>	TDZE	<b>13</b>
	Apt Elev	<b>14</b>

# RNAV (RNP) RWY 19

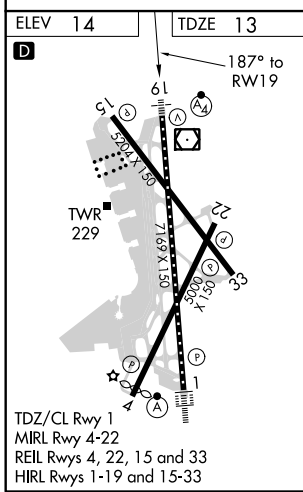
RONALD REAGAN WASHINGTON NATIONAL (DCA)

For uncompensated Baro-VNAV systems, procedure N/A below -9°C (16°F) or above 54°C (130°F). Inoperative table does not apply. RF and GPS required.		MISSED APPROACH: Climb to 3000 on the final approach track to RWY19 then direct BADDN and hold, continue climb-in-hold to 3000.				
		D-ATIS	POTOMAC APP CON	WASHINGTON TOWER	GND CON	CLNC DEL
<b>132.65</b>	<b>119.85 239.25</b> <b>124.2 360.8</b>	(WEST/SOUTH) (EAST)	<b>119.1 257.6</b>	<b>121.7 257.6</b>	<b>128.25</b>	



NE-3, 08 OCT 2020 to 05 NOV 2020

NE-3, 08 OCT 2020 to 05 NOV 2020



ELEV 14	TDZE 13	MISSED APCH FIX				
			3000	Final App tr to RWY19	BADDN	
GP 3.00° TCH 50						
CATEGORY			A	B	C	D
RNP 0.11 DA			491-1½ 478 (500-1½)			
RNP 0.30 DA			550-1¾ 537 (600-1¾)			
<b>AUTHORIZATION REQUIRED</b>						