

# TRUPS FOUR ARRIVAL (RNAV) Arrival Routes

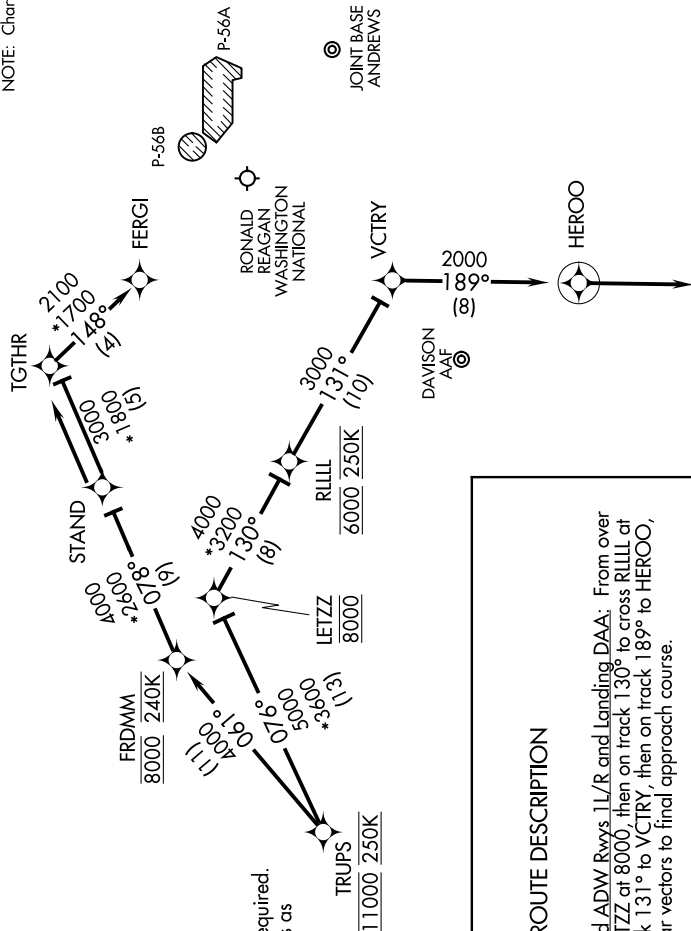
WASHINGTON, DC

NE-3, 08 OCT 2020 to 05 NOV 2020

POTOMAC APP CON  
 118.675 323.175  
 DCA D-ATIS  
 132.65  
 KADW D-ATIS  
 133.675 251.05  
 KDAW ATIS  
 128.175

NOTE: Radar required.  
 NOTE: RNAV 1.  
 NOTE: DME/DME/IRU or GPS required.  
 NOTE: Turboprops only; turboprops as assigned by ATC only.

NOTE: Chart not to scale.



### ARRIVAL ROUTE DESCRIPTION

Landing DCA Rwy 1, 4, 33, and ADW Rwys 1L/R and Landing DAA: From over TRUPS on track 076° to cross LETZZ at 8000, then on track 130° to cross RILLL at 6000 and at 250K, then on track 131° to VCTRY, then on track 189° to HERO0, then on track 189°. Expect radar vectors to final approach course.

Landing DCA Rwys 15, 19, 22: From over TRUPS on track 061° to cross FRDMM at 8000 and 240K, then on track 078° to STAND, then on track 078° to TGTTHR, then on track 148° to FERG1. Expect LDA/DME Rwy 19, RNAV/RNP Rwy 19, RIVER VISUAL Rwy 19 or radar vectors to final approach course.

Landing ADW Rwys 19L/R: From over TRUPS on track 061° to cross FRDMM at 8000 and at 240K, then on track 078° to STAND, then on track 078°. Expect radar vectors to final approach course.

NOTE: Prohibited area (P-56) north of DCA-avoid-surface to FL180.

NOTE: Maintain last assigned altitude until cleared to "descend via" the TRUPS4. ARTCC will issue landing assignment (north or south) and Potomac TRACON will issue runway assignments.

# TRUPS FOUR ARRIVAL (RNAV) Arrival Routes

WASHINGTON, DC

NE-3, 08 OCT 2020 to 05 NOV 2020