

# ARGAL SIX ARRIVAL

SE-2, 08 OCT 2020 to 05 NOV 2020

## ARRIVAL ROUTE DESCRIPTION

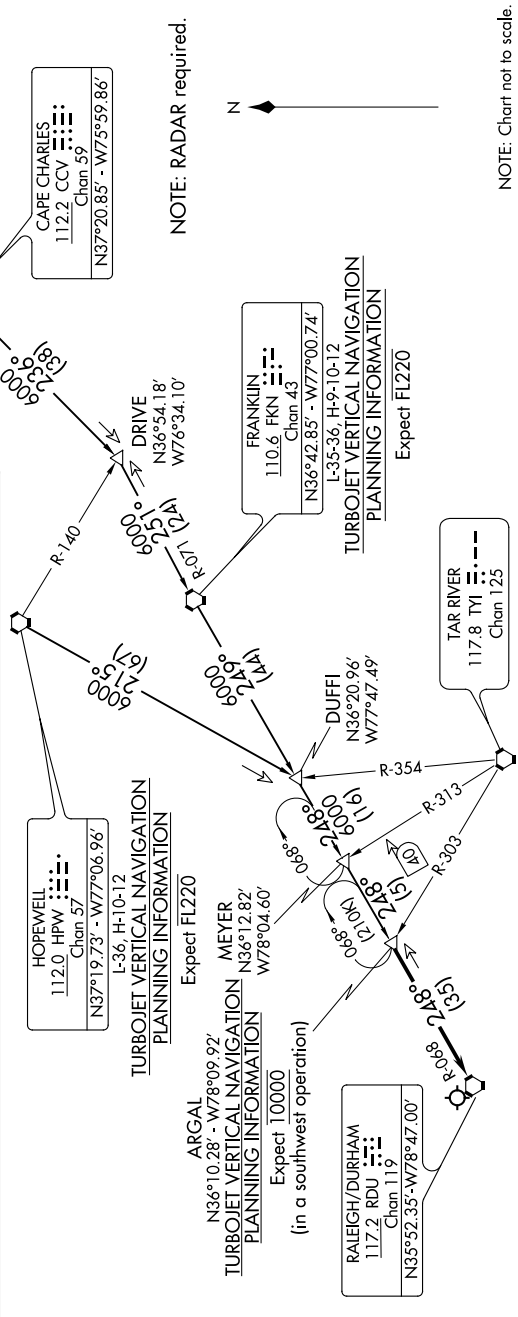
**FRANKLIN TRANSITION [FKN.ARGAL6]:** From over FKN VORTAC on FKN R-249 to DUFFI, then on RDU R-068 to ARGAL. Thence, . . .

**HOPEWELL TRANSITION [HPW.ARGAL6]:** From over HPW VORTAC on HPW R-215 to DUFFI, then on RDU R-068 to ARGAL. Thence, . . .

**SALISBURY TRANSITION [SBY.ARGAL6]:** From over SBY VORTAC on SBY R-213 and CCV R-031 to CCV VORTAC, then on CCV R-236 to DRIVE, then on FKN R-071 to FKN VORTAC, then on FKN R-249 to DUFFI, then on RDU R-068 to ARGAL. Thence, . . .

**SNOW HILL TRANSITION [SWL.ARGAL6]:** From over SWL VORTAC on SWL R-219 and CCV R-041 to CCV VORTAC, then on CCV R-236 to DRIVE, then on FKN R-071 to FKN VORTAC, then on FKN R-249 to DUFFI, then on RDU R-068 to ARGAL. Thence, . . .

. . . from over ARGAL on RDU R-068 to RDU VORTAC. Expect RADAR vectors to final approach course after ARGAL.



# ARGAL SIX ARRIVAL

(ARGAL.ARGAL6) 24MAY18

SE-2, 08 OCT 2020 to 05 NOV 2020