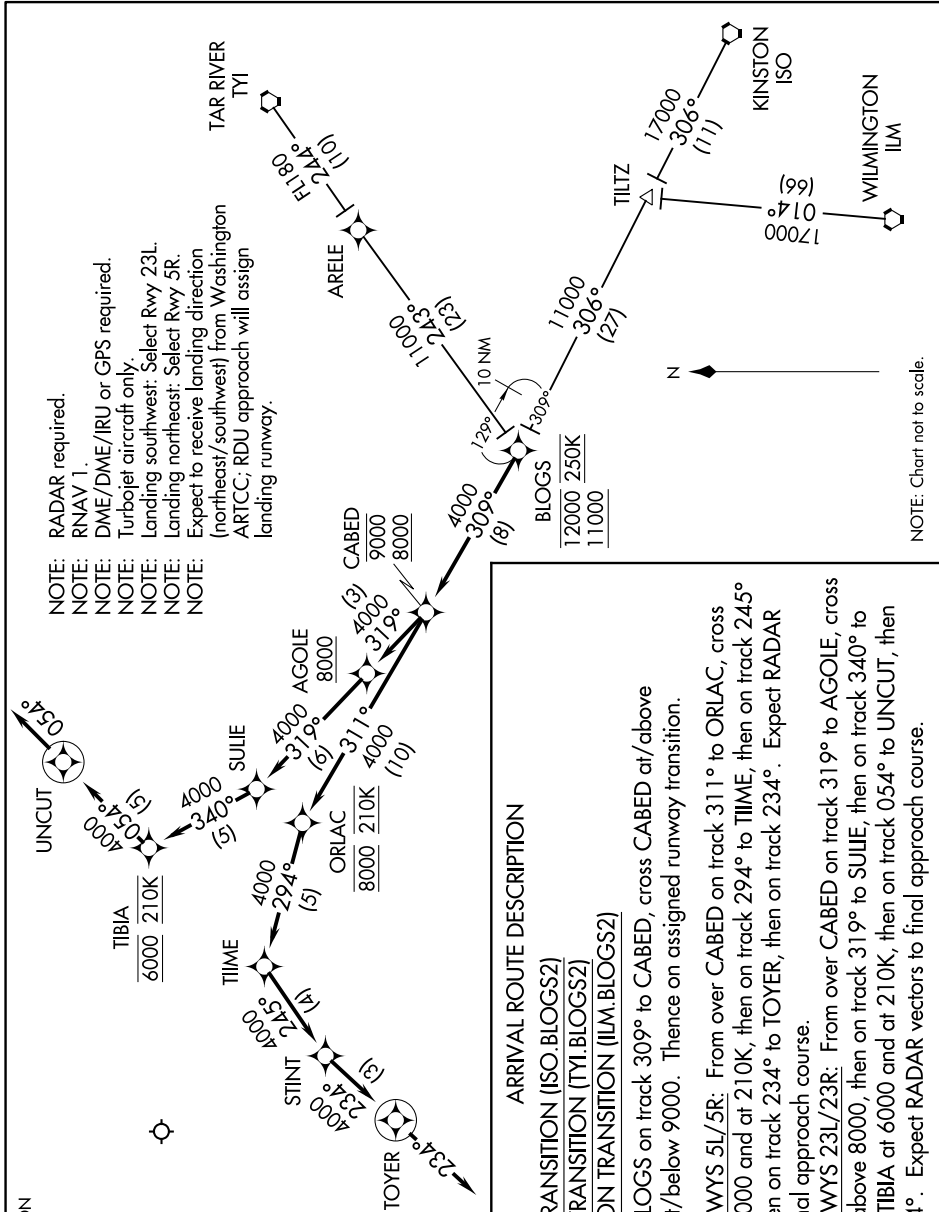


BLOGS TWO ARRIVAL (RNAV)

SE-2, 08 OCT 2020 to 05 NOV 2020

RALEIGH APP CON
124.95 318.2
D-ATIS
123.8



- NOTE: RADAR required.
 NOTE: RNAV 1.
 NOTE: DME/DME/IRU or GPS required.
 NOTE: Turbojet aircraft only.
 NOTE: Landing southwest: Select Rwy 23L.
 NOTE: Landing northeast: Select Rwy 5R.
 NOTE: Expect to receive landing direction (northeast/southwest) from Washington ARTCC; RDU approach will assign landing runway.

NOTE: Chart not to scale.

ARRIVAL ROUTE DESCRIPTION

KINSTON TRANSITION (ISO.BLOGS2)

TAR RIVER TRANSITION (TYI.BLOGS2)

WILMINGTON TRANSITION (ILM.BLOGS2)

From over BLOGS on track 309° to CABED, cross CABED at/above 8000 and at/below 9000. Thence on assigned runway transition.

LANDING RWYS 5L/5R: From over CABED on track 311° to ORLAC, cross ORLAC at 8000 and at 210K, then on track 294° to SUJIE, then on track 245° to STINT, then on track 234° to TOYER, then on track 234°. Expect RADAR vectors to final approach course.

LANDING RWYS 23L/23R: From over CABED on track 319° to AGOLE, cross AGOLE at/above 8000, then on track 319° to SUJIE, then on track 340° to TIBIA, cross TIBIA at 6000 and at 210K, then on track 054° to UNCT, then on track 054°. Expect RADAR vectors to final approach course.

SE-2, 08 OCT 2020 to 05 NOV 2020

BLOGS TWO ARRIVAL (RNAV)

(BLOGS.BLOGS2) 24MAY18