

LOC/DME I-LEI 108.5 Chan 22	APP CRS 234°	Rwy Idg 7500 TDZE 435 Apt Elev 435
---	------------------------	---

ILS or LOC RWY 23L

RALEIGH-DURHAM INTL (RDU)

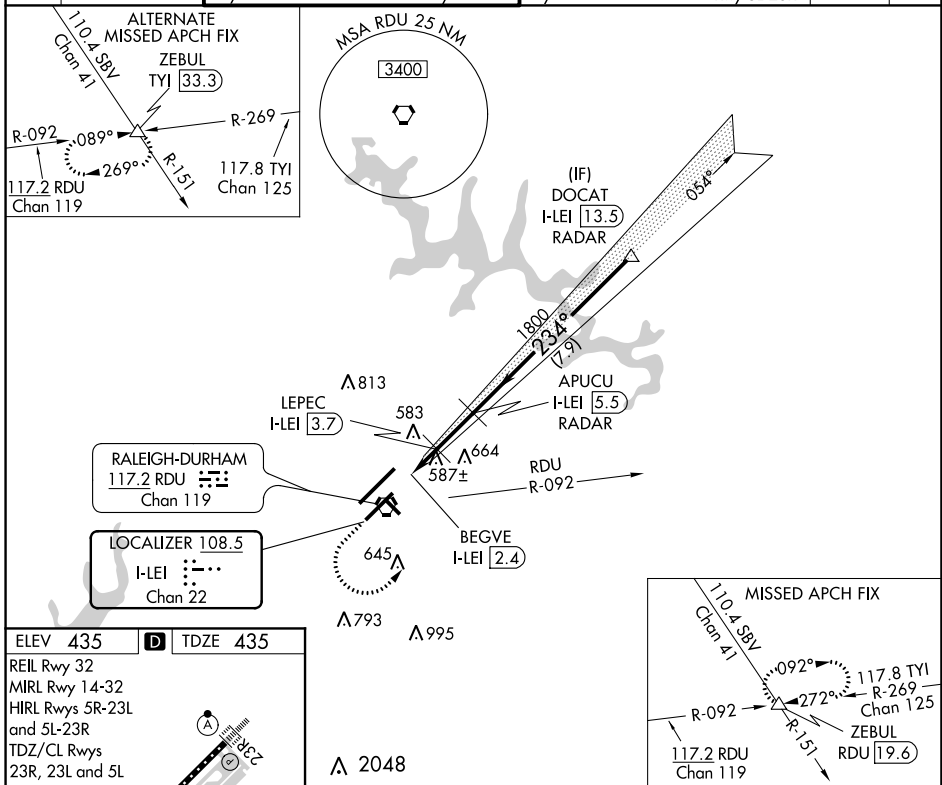
RADAR required for procedure entry. DME required for LOC only.

Simultaneous approach authorized. For inop ALS, increase S-ILS 23L all Cats visibility to RVR 5500. For inop ALS, increase S-LOC-23L Cat C/D visibility to 2½ SM. Localizer unusable for coupled approaches below 1100 or within 2 NM of threshold.

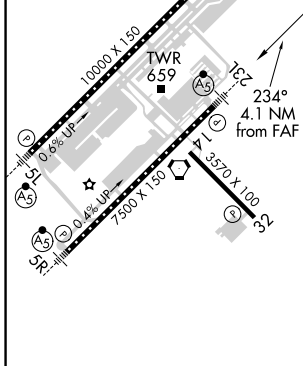


MISSED APPROACH: Climb to 1100 then climbing left turn to 2600 on heading 050° and RDU VORTAC R-092 to ZEBUL INT and hold.

D-ATIS 123.8	RALEIGH APP CON 127.675 307.9	(EAST) RALEIGH TOWER (WEST) 127.45 257.8 Rwys 5R-23L and 14-32	119.3 257.8 Rwy 5L-23R	(EAST) GND CON (WEST) 121.9 348.6 Rwys 5R-23L and 14-32	121.7 348.6 Rwy 5L-23R	CLNC DEL 120.1	CPDLC
------------------------	---	---	----------------------------------	--	----------------------------------	--------------------------	-------



ELEV 435	D	TDZE 435
REIL Rwy 32		
MIRL Rwy 14-32		
HIRL Rwys 5R-23L and 5L-23R		
TDZ/CL Rwys 23R, 23L and 5L		



1100	2600	ZEBUL	APUCU I-LEI [5.5] RADAR	Localizer unusable from 1 NM from threshold.	DOCAT I-LEI [13.5] RADAR					
RDU R-092	hdg 050°	△								
*LOC only.										
BEGVE I-LEI [2.4]	LEPEC I-LEI [3.7]	1800	1800	4000	GS 3.00° TCH 56					
<table border="1"> <tr> <td>1 NM</td> <td>1.3 NM</td> <td>1.8 NM</td> <td>7.9 NM</td> <td></td> </tr> </table>						1 NM	1.3 NM	1.8 NM	7.9 NM	
1 NM	1.3 NM	1.8 NM	7.9 NM							
CATEGORY	A	B	C	D						
S-ILS 23L	806/35 371 (400-5%)									
S-LOC 23L	840/40 405 (500-¾)									
CIRCLING	960-1¼	525 (600-1¼)	1040-1¾ 605 (700-1¾)	1180-2½ 745 (800-2½)						