

LOC/DME I-GKK 109.1 Chan 28	APP CRS 054°	Rwy Idg TDZE Apt Elev 10000 384 435
--	------------------------	---

ILS or LOC RWY 5L

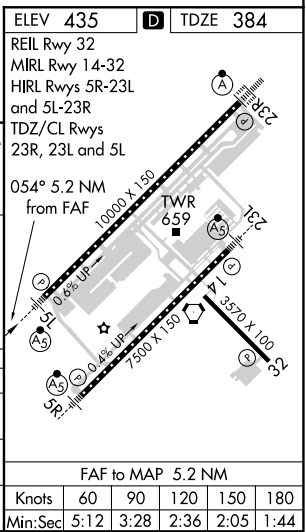
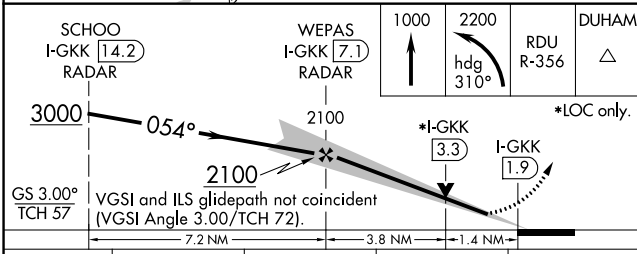
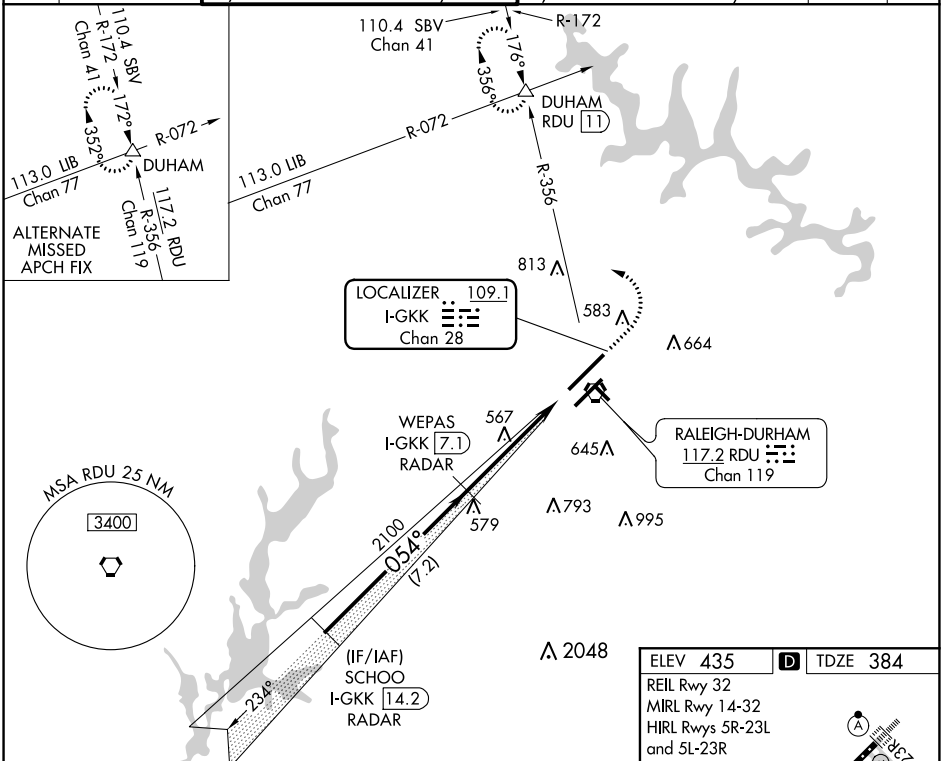
RALEIGH-DURHAM INTL (RDU)

RADAR required for procedure entry, DME required.
 Simultaneous approach authorized.



MISSED APPROACH: Climb to 1000 then climbing left turn to 2200 on heading 310° and RDU VORTAC R-356 to DUHAM INT/RDU 11 DME and hold.

D-ATIS 123.8	RALEIGH APP CON 127.675 307.9	(EAST) RALEIGH TOWER 127.45 257.8	(WEST) 119.3 257.8	(EAST) GND CON 121.9 348.6	(WEST) 121.7 348.6	CLNC DEL 120.1	CPDLC
		Rwys 5R-23L and 14-32	Rwy 5L-23R	Rwys 5R-23L and 14-32	Rwy 5L-23R		



1000	2200	RDU R-356	DUHAM
S-ILS 5L		595/18 211 (200-1/2)	
S-LOC 5L		880/40	880/50
		880/24 496 (500-1/2)	496 (500-1)
CIRCLING		1040-1 3/4	1180-2 1/2
		605 (700-1 3/4)	745 (800-2 1/2)

SE-2, 08 OCT 2020 to 05 NOV 2020

SE-2, 08 OCT 2020 to 05 NOV 2020

ELEV 435	TDZE 384
REIL Rwy 32	MIRL Rwy 14-32
HIRL Rwys 5R-23L and 5L-23R	TDZ/CL Rwys 23R, 23L and 5L
054° 5.2 NM from FAF	
FAF to MAP 5.2 NM	
Knots	60 90 120 150 180
Min:Sec	5:12 3:28 2:36 2:05 1:44