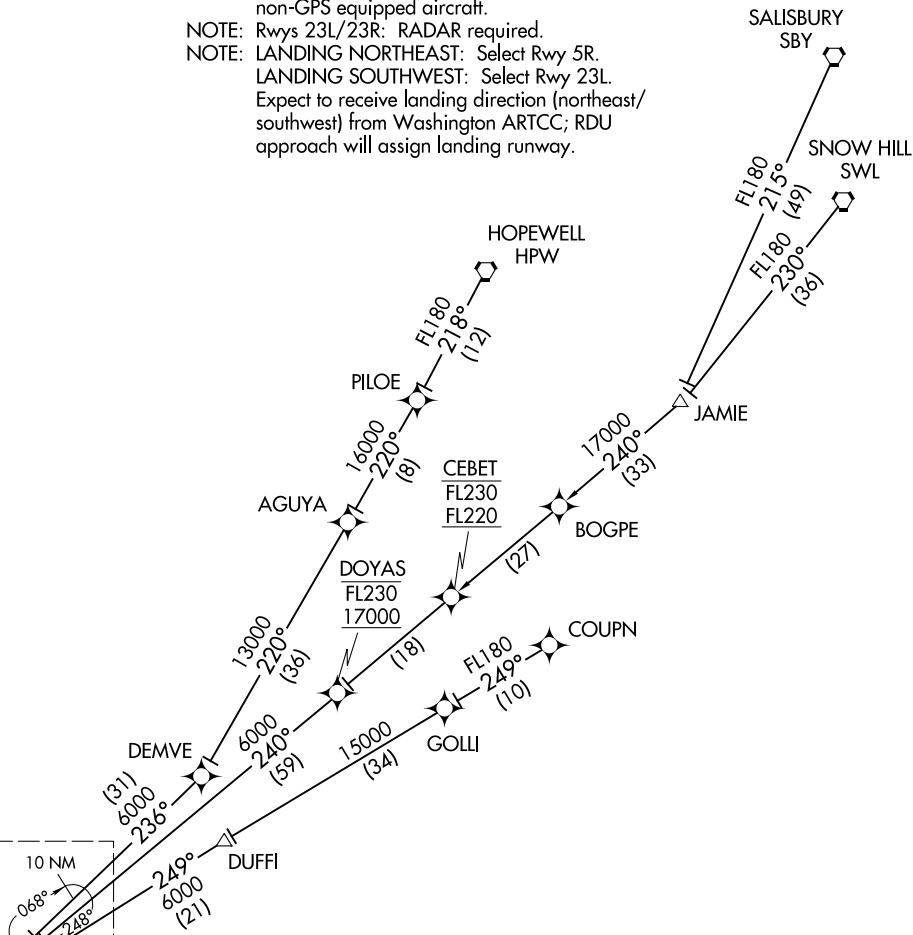


KAROO TWO ARRIVAL(RNAV) Transition Routes

RALEIGH APP CON
124.95 318.2
D-ATIS
123.8

- NOTE: RNAV 1.
 - NOTE: DME/DME/IRU or GPS required.
 - NOTE: Turbojet aircraft only.
 - NOTE: Rwy 5L/5R: RADAR required for non-GPS equipped aircraft.
 - NOTE: Rwy 23L/23R: RADAR required.
 - NOTE: LANDING NORTHEAST: Select Rwy 5R.
 - NOTE: LANDING SOUTHWEST: Select Rwy 23L.
- Expect to receive landing direction (northeast/southwest) from Washington ARTCC; RDU approach will assign landing runway.



SE-2, 08 OCT 2020 to 05 NOV 2020

SE-2, 08 OCT 2020 to 05 NOV 2020



See following page for arrival routes

(NARRATIVE ON FOLLOWING PAGE)
(NOTES CONTINUED ON FOLLOWING PAGE)

COUPN TRANSITION (COUPN.KAROO2)
HOPEWELL TRANSITION (HPW.KAROO2)
SALISBURY TRANSITION (SBY.KAROO2)
SNOW HILL TRANSITION (SWL.KAROO2)

NOTE: Chart not to scale.