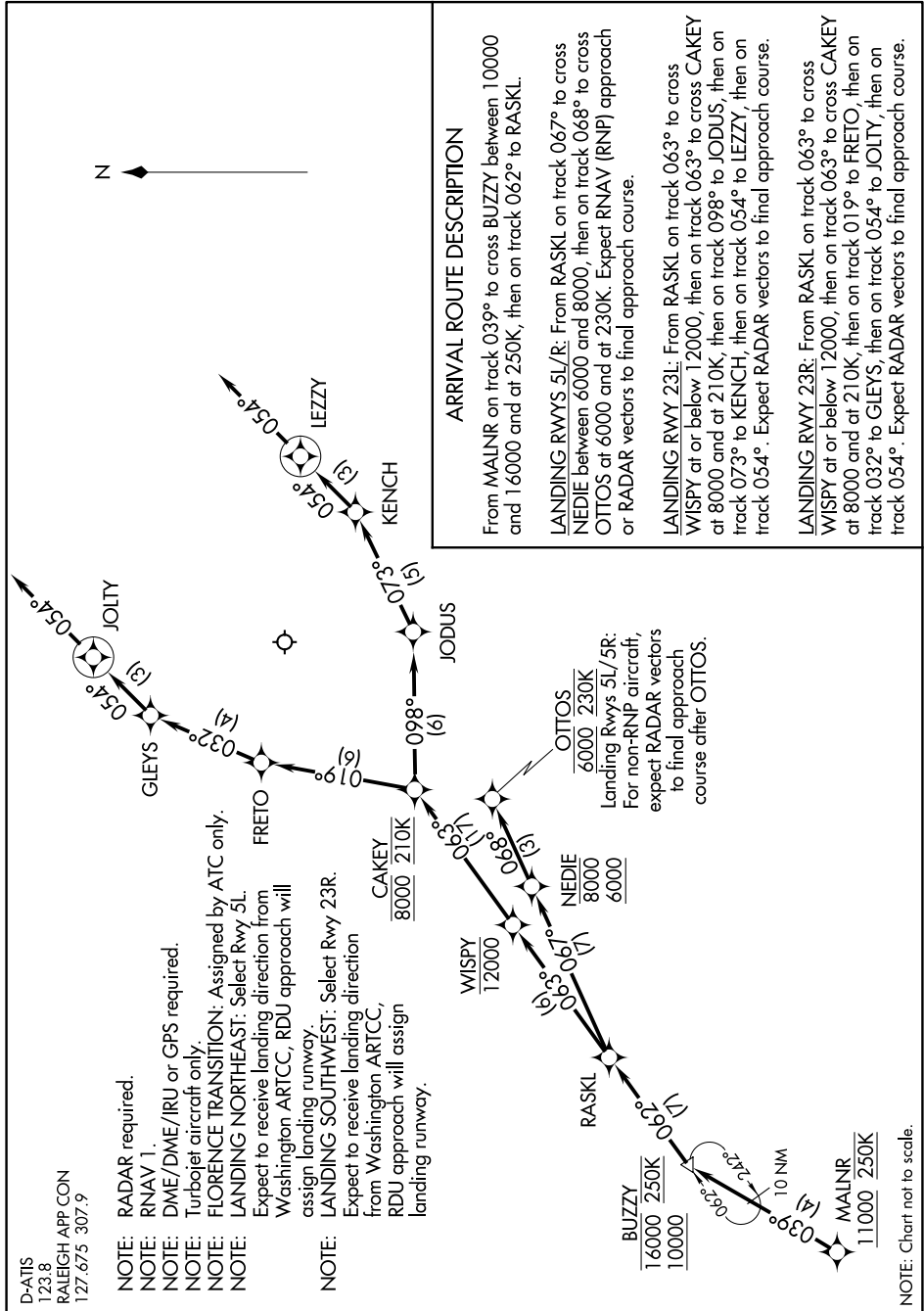


MALNR FOUR ARRIVAL (RNAV)

Arrival Routes

SE-2, 08 OCT 2020 to 05 NOV 2020



D-ATIS
123.8
RALEIGH APP CON
127.675 307.9

NOTE: RADAR required.

NOTE: RNAV 1.

NOTE: DME/DME/IRU or GPS required.

NOTE: Turbjet aircraft only.

NOTE: FLORENCE TRANSITION: Assigned by ATC only.

NOTE: LANDING NORTHEAST: Select Rwy 5L.

NOTE: Expect to receive landing direction from Washington ARTCC. RDU approach will assign landing runway.

NOTE: LANDING SOUTHWEST: Select Rwy 23R.

NOTE: Expect to receive landing direction from Washington ARTCC, RDU approach will assign landing runway.

NOTE: CAKEY 8000 210K

NOTE: WISPY 12000

NOTE: NEDIE 8000 6000

NOTE: OTTOS 6000 230K

NOTE: Landing Rwy 5L/5R: For non-RNP aircraft, expect RADAR vectors to final approach course after OTTOS.

NOTE: Chart not to scale.

MALNR FOUR ARRIVAL (RNAV)

Arrival Routes

SE-2, 08 OCT 2020 to 05 NOV 2020