

RNAV (RNP) Z RWY 23L


RALEIGH-DURHAM INTL (RDU)

APP CRS	Rwy Idg	7500
234°	TDZE	435
	Apt Elev	435

RNP AR APCH.

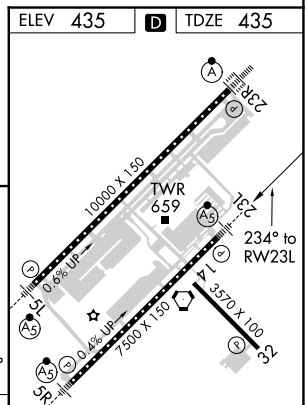
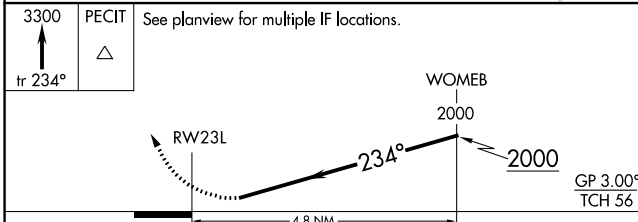
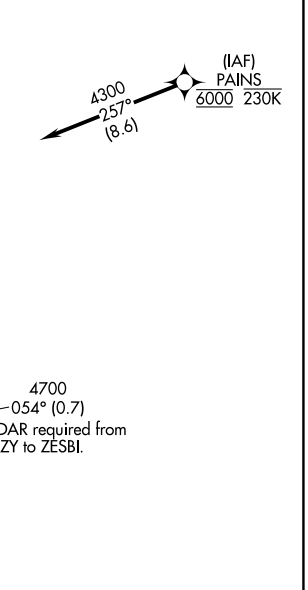
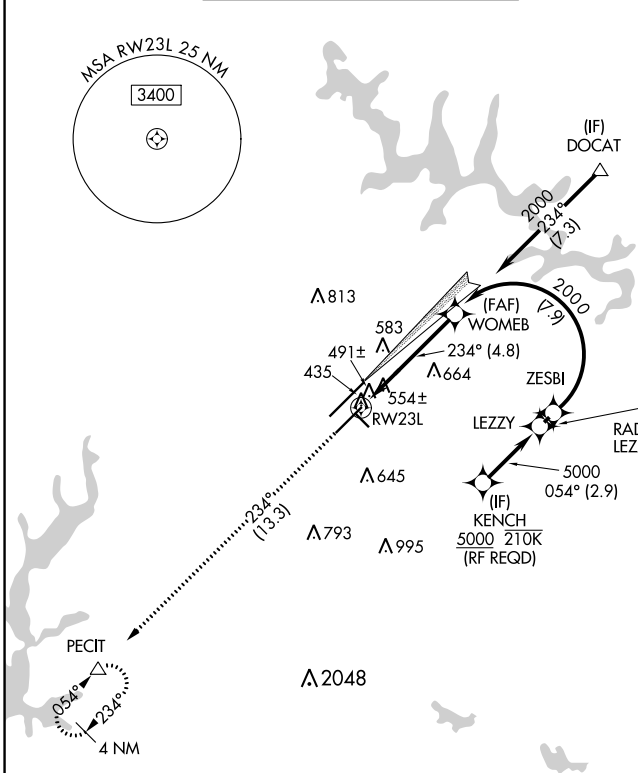
▼ For uncompensated Baro-VNAV systems, LNAV/VNAV NA below -9°C or above 54°C. Use of FD or AP providing RNAV track guidance required during simultaneous operations. Simultaneous approach authorized, except for arrivals at KENCH.

MALSR



MISSED APPROACH:
Climb to 3300 on track 234° to PECIT and hold.

D-ATIS	RALEIGH APP CON	(EAST) RALEIGH TOWER (WEST)	(EAST) GND CON (WEST)	CLNC DEL	CPDLC
123.8	127.675 307.9	127.45 257.8 Rwys 5R-23L and 1-4-32	119.3 257.8 Rwy 5L-23R	121.9 348.6 Rwys 5R-23L and 1-4-32	121.7 348.6 Rwy 5L-23R
				120.1	



CATEGORY	A	B	C	D
RNP 0.10 DA		774/40	339 (400-¾)	
RNP 0.30 DA		870/50	435 (500-1)	

AUTHORIZATION REQUIRED

REIL Rwy 32
MIRL Rwy 14-32
HIRL Rwys 5R-23L and 5L-23R
TDZ/CL Rwys 5L, 23L, and 23R

SE-2, 08 OCT 2020 to 05 NOV 2020

SE-2, 08 OCT 2020 to 05 NOV 2020