

RNAV (RNP) Z RWY 23R

RALEIGH-DURHAM INTL (RDU)

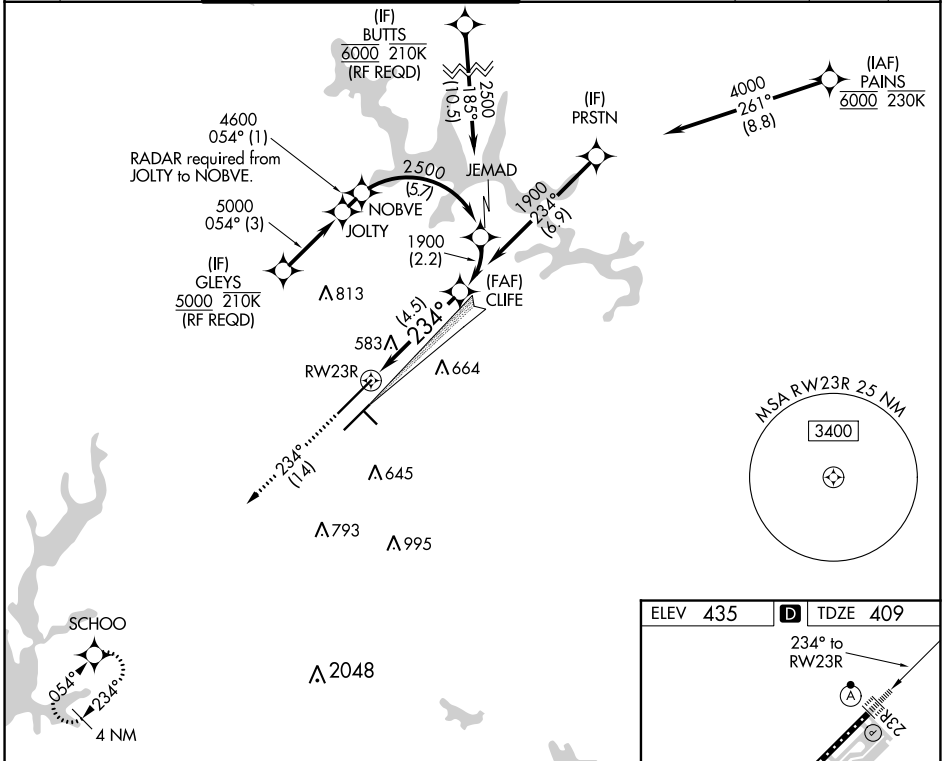
APP CRS	Rwy Idg	10000
234°	TDZE	409
	Apt Elev	435

RNP AR APCH, RF required.

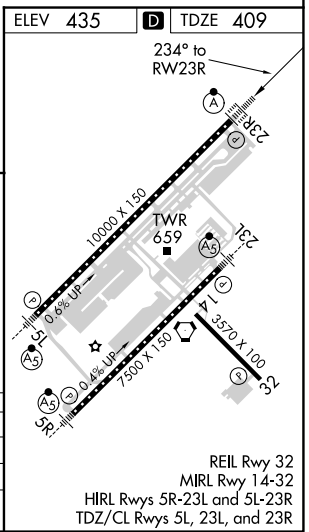
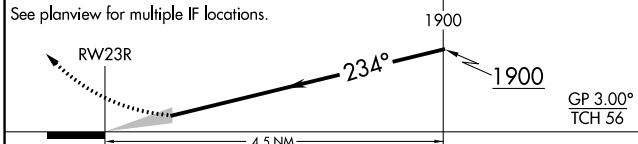
▼ For uncompensated Baro-VNAV systems, procedure NA below -9°C (16°F) or above 54°C (130°F). Use of FD or AP providing RNAV track guidance required during simultaneous operations. Simultaneous approach authorized with ILS or LOC Rwy 23L, RNAV (GPS) Y Rwy 23L, except for arrivals at GLEYS and BUTTS. For inop ALS, increase RNP 0.15 all Cats visibility to 1¼, increase RNP 0.30 all Cats visibility to 1½.

ALSIF-2	MISSED APPROACH:
	Climb to 3000 on track 234° to SCHOO and hold.

D-ATIS	RALEIGH APP CON	(EAST) RALEIGH TOWER (WEST)	(EAST) GND CON	(WEST)	CLNC DEL	CPDLC
123.8	127.675 307.9	127.45 257.8 Rwys 5R-23L and 14-32	119.3 257.8 Rwy 5L-23R	121.9 348.6 Rwys 5R-23L and 14-32	121.7 348.6 Rwy 5L-23R	120.1



3000	SCHOO	VGSI and RNAV glidepath not coincident (VGSI Angle 3.00/TCH 69).
↑ tr 234°		



CATEGORY	A	B	C	D
RNP 0.15 DA		779/40	370 (400-¾)	
RNP 0.30 DA		978-1½	569 (600-1½)	

AUTHORIZATION REQUIRED

RNAV (RNP) Z RWY 23R

SE-2, 08 OCT 2020 to 05 NOV 2020

SE-2, 08 OCT 2020 to 05 NOV 2020

REIL Rwy 32
MIRL Rwy 14-32
HIRL Rwys 5R-23L and 5L-23R
TDZ/CL Rwys 5L, 23L, and 23R