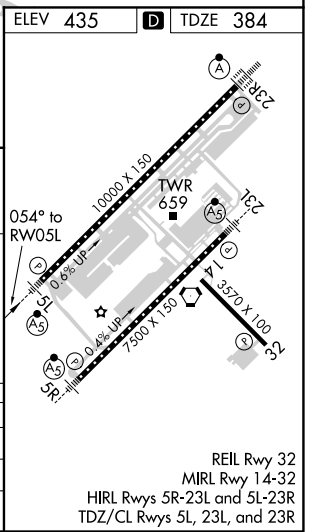
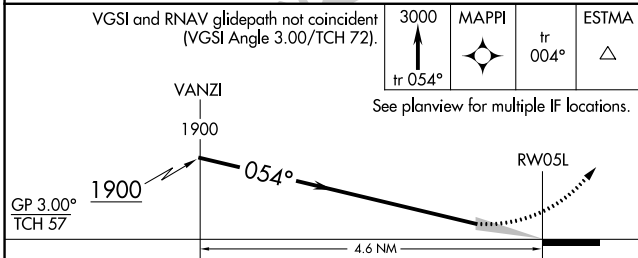
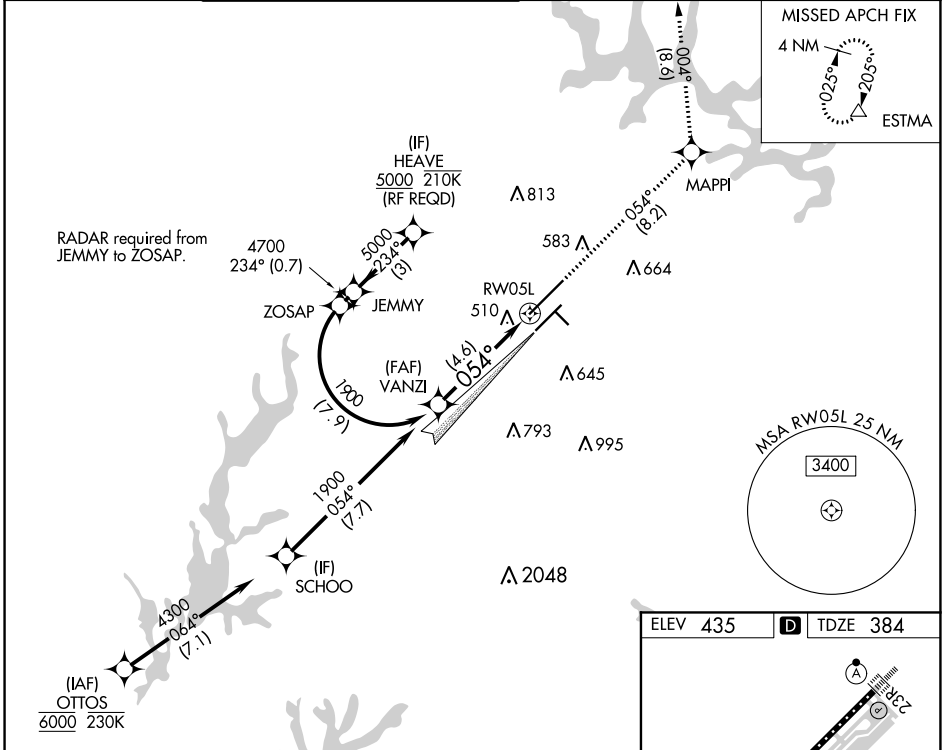


APP CRS	Rwy Idg <b>10000</b>
<b>054°</b>	TDZE <b>384</b>
	Apt Elev <b>435</b>

# RNAV (RNP) Z RWY 5L

RALEIGH-DURHAM INTL (RDU)

RNP AR APCH.		MALSR		MISSED APPROACH: Climb to 3000 on track 054° to MAPPI and on track 004° to ESTMA and hold.		
▼ For uncompensated Baro-VNAV systems, LNAV/VNAV NA below -9°C or above 47°C. Simultaneous approach authorized. Use of FD or AP providing RNAV track guidance required during simultaneous operations. For inop ALS, increase RNP 0.10 all Cats visibility to RVR 6000 and RNP 0.30 all Cats visibility to 1%.						
D-ATIS	RALEIGH APP CON	(EAST) RALEIGH TOWER (WEST)	(EAST) GND CON	(WEST)	CLNC DEL	CPDLC
<b>123.8</b>	<b>127.675 307.9</b>	<b>127.45 257.8</b> Rwys 5R-23L and 1-4-32	<b>121.9 348.6</b> Rwys 5R-23L and 1-4-32	<b>121.7 348.6</b> Rwy 5L-23R	<b>120.1</b>	



CATEGORY	A	B	C	D
RNP 0.10 DA		727/30	343 (300-5%)	
RNP 0.30 DA		821/50	437 (400-1)	

**AUTHORIZATION REQUIRED**

SE-2, 08 OCT 2020 to 05 NOV 2020

SE-2, 08 OCT 2020 to 05 NOV 2020