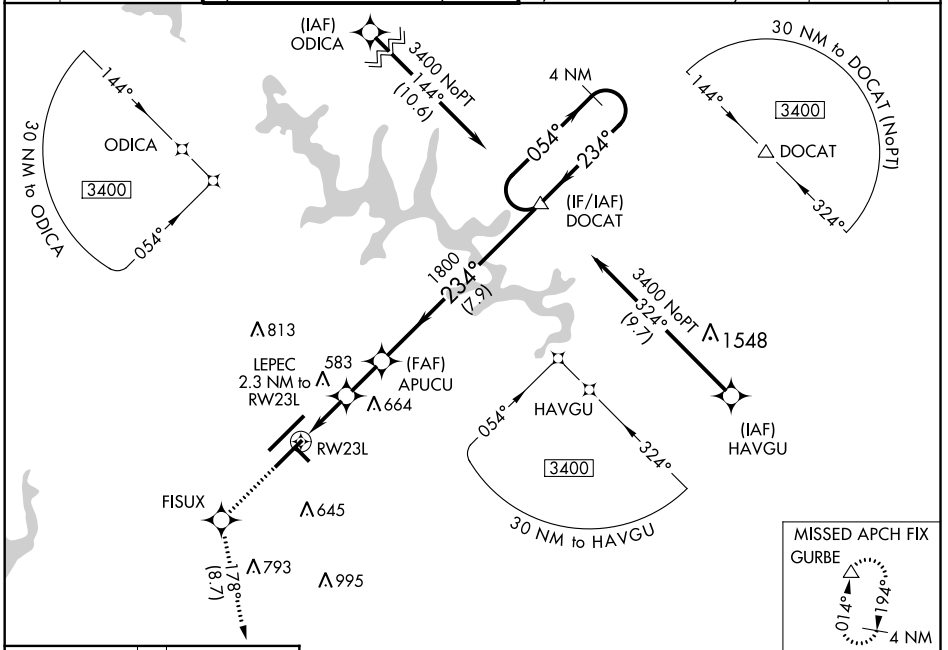


WAAS CH 65713 W23B	APP CRS 234°	Rwy Idg TDZE 435 Apt Elev 435	7500
--	------------------------	---	-------------

RNAV (GPS) Y RWY 23L

RALEIGH-DURHAM INTL (RDU)

RNP APCH.		MALSR	MISSED APPROACH: Climb to 3100 direct FISUX and left turn on track 178° to GURBE and hold.				
<p>▼ For uncompensated Baro-VNAV systems, LNAV/VNAV NA below -10°C (14°F) or above 54°C (130°F). Simultaneous approach authorized. LNAV procedure NA during simultaneous operations. Use of FD or AP required during simultaneous operations. For inop ALS, increase LNAV Cat C/D visibility to 1½ SM.</p>							
D-ATIS	RALEIGH APP CON	(EAST) RALEIGH TOWER	(WEST)	(EAST) GND CON	(WEST)	CLNC DEL	CPDLC
123.8	127.675 307.9	127.45 257.8 Rwys 5R-23L and 14-32	119.3 257.8 Rwy 5L-23R	121.9 348.6 Rwys 5R-23L and 14-32	121.7 348.6 Rwy 5L-23R	120.1	



SE-2, 08 OCT 2020 to 05 NOV 2020

SE-2, 08 OCT 2020 to 05 NOV 2020

ELEV 435	TDZE 435	3100	FISUX	GURBE				
<p>*LNAV only.</p>								
CATEGORY	A	B	C	D				
LPV DA	635/18		200 (200-½)					
LNAV/VNAV DA	820/35		385 (400-5/8)					
LNAV MDA	920/24		485 (500-½)		920/50		485 (500-1)	
CIRCLING	960-1		525 (600-1)		1040-1¾ 605 (700-1¾)		1180-2½ 745 (800-2½)	