

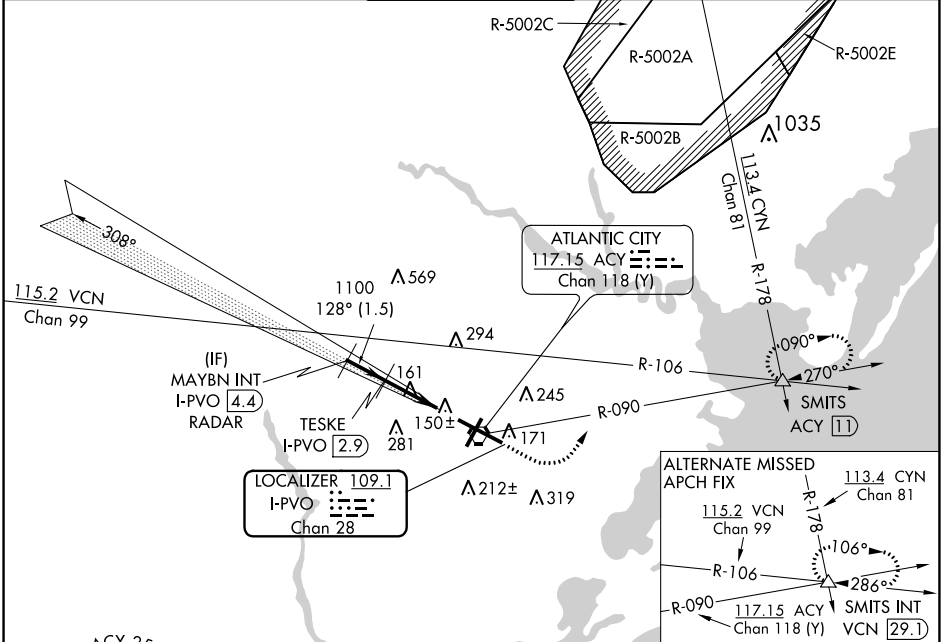
LOC/DME I-PVO	APP CRS	Rwy ldg	<b>10000</b>
<b>109.1</b>	<b>128°</b>	TDZE	<b>75</b>
Chan <b>28</b>		Apt Elev	<b>75</b>

# COPTER ILS or LOC/DME RWY 13

ATLANTIC CITY INTL (ACY)

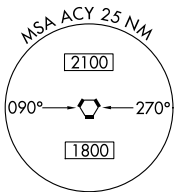
<p>NA ASR</p>	<p>MALS R</p>	MISSED APPROACH: Climb to 600 then climbing left turn to 2000 via ACY R-090 to SMITS INT/ACY 11 DME and hold.			
		ATIS	ATLANTIC CITY APP CON	ATLANTIC CITY TOWER	GND CON
125.725	316.15	124.6 327.125	120.3 239.0	121.9 284.6	127.85 353.775

ATIS	ATLANTIC CITY APP CON	ATLANTIC CITY TOWER	GND CON	CLNC DEL
125.725	316.15	120.3 239.0	121.9 284.6	127.85 353.775

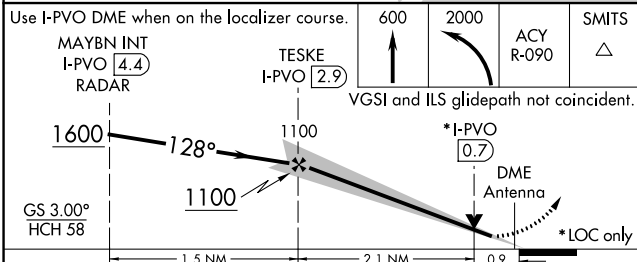


NE-2, 08 OCT 2020 to 05 NOV 2020

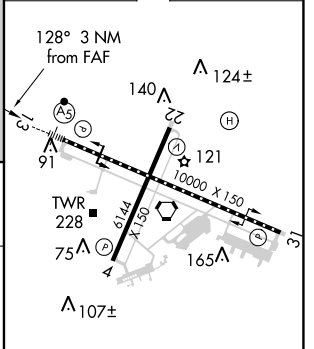
NE-2, 08 OCT 2020 to 05 NOV 2020



## RADAR REQUIRED



ELEV 75		TDZE 75
---------	--	---------



TDZ/CL Rwy 13  
HIRL Rwys 4-22 and 13-31  
REIL Rwy 31

CATEGORY	COPTER					FAF to MAP 3 NM					
H-ILS 13	275/12 200 (200-½)					Knots	45	60	75	90	105
H-LOC 13	420/24 345 (400-½)					Min:Sec	4:00	3:00	2:24	2:00	1:43