

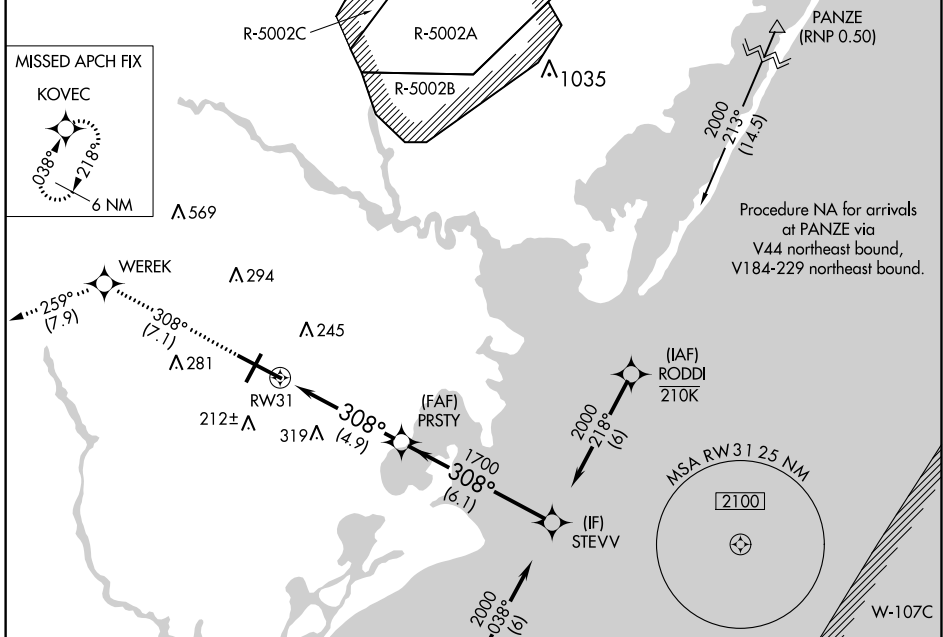
| | | |
|-------------|----------|--------------|
| APP CRS | Rwy ldg | 10000 |
| 308° | TDZE | 63 |
| | Apt Elev | 75 |

RNAV (RNP) Z RWY 31

ATLANTIC CITY INTL (ACY)

| | | |
|-----|--|--|
| ASR | GPS Required. Procedure NA at night. For uncompensated Baro-VNAV systems, procedure NA below -13°C (8°F) or above 54°C (130°F). | MISSED APPROACH: Climb to 2000 on track 308° to WEREK on track 259° to KOVEC and hold. |
|-----|--|--|

| | | | | |
|-----------------------|-----------------------|---------------------|--------------------|-----------------------|
| ATIS | ATLANTIC CITY APP CON | ATLANTIC CITY TOWER | GND CON | CLNC DEL |
| 125.725 316.15 | 124.6 327.125 | 120.3 239.0 | 121.9 284.6 | 127.85 353.775 |



Procedure NA for arrivals on SIE VORTAC airway radials 333 CW 131.

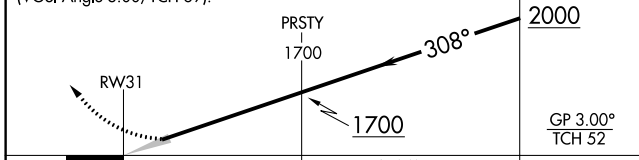
SEA ISLE SIE (RNP 0.50)

Procedure NA for arrivals at PANZE via V44 northeast bound, V184-229 northeast bound.

| | | | | | | | |
|------|---|---------|-------|---|---------|-------|---|
| 2000 | ↑ | tr 308° | WEREK | ↑ | tr 259° | KOVEC | ↑ |
|------|---|---------|-------|---|---------|-------|---|

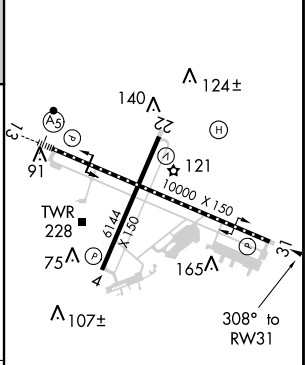
Procedure Turn NA

VGSI and RNAV glidepath not coincident (VGSI Angle 3.00/TCH 69).



| | | | | |
|-------------|---|--------|--------------|---|
| CATEGORY | A | B | C | D |
| RNP 0.30 DA | | 408/60 | 345 (400-1¼) | |

| | | |
|---------|----------|---------|
| ELEV 75 | D | TDZE 63 |
|---------|----------|---------|



TDZ/CL Rwy 13
HIRL Rwy 4-22 and 13-31
REIL Rwy 31

NE-2, 08 OCT 2020 to 05 NOV 2020

NE-2, 08 OCT 2020 to 05 NOV 2020

AUTHORIZATION REQUIRED