

# RNAV (GPS) Y RWY 13

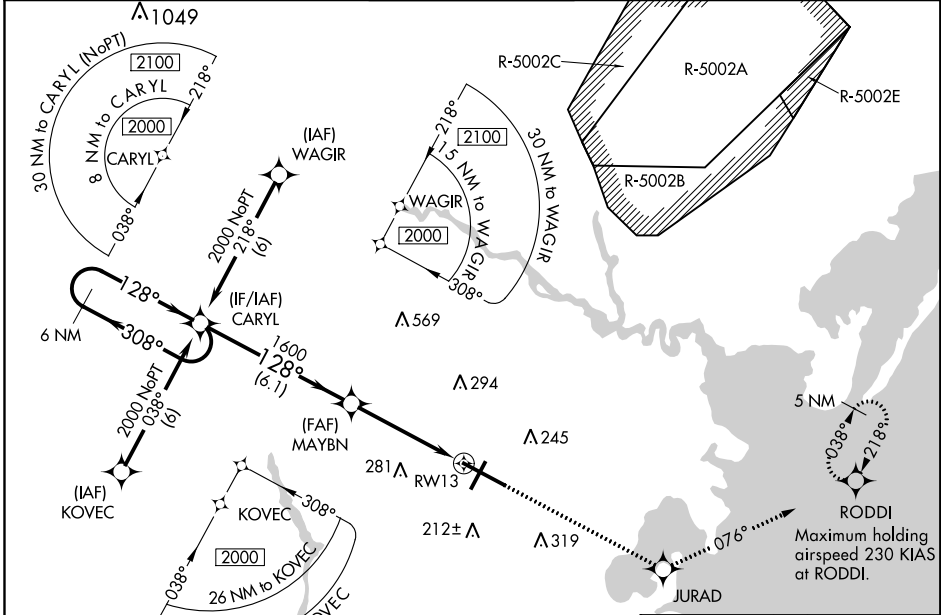
ATLANTIC CITY INTL (ACY)

WAAS CH <b>45513</b> <b>W13A</b>	APP CRS <b>128°</b>	Rwy Idg <b>10000</b> TDZE <b>75</b> Apt Elev <b>75</b>
--	------------------------	--

**ASR** For inoperative MALSRS, increase LPV Cat E visibility to RVR 4000, LNAV/VNAV Cat E visibility to 1½, and LNAV Cat D visibility to RVR 6000, Cat E visibility to 1½. For uncompensated Baro-VNAV systems, LNAV/VNAV NA below -15°C (5°F) or above 48°C (118°F). DME/DME RNP-0.3 NA.

**MALSRS**  
**AS** MISSED APPROACH: Climb to 2000 direct JURAD and on track 076° to RODDI and hold.

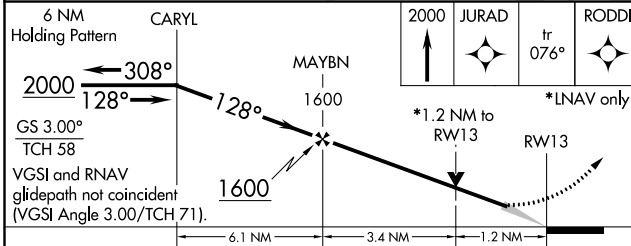
ATIS <b>125.725 316.15</b>	ATLANTIC CITY APP CON <b>124.6 327.125</b>	ATLANTIC CITY TOWER <b>120.3 239.0</b>	GND CON <b>121.9 284.6</b>	CLNC DEL <b>127.85 353.775</b>
-------------------------------	---	---	-------------------------------	-----------------------------------



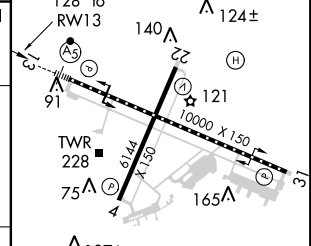
NE-2, 08 OCT 2020 to 05 NOV 2020

NE-2, 08 OCT 2020 to 05 NOV 2020

6 NM Holding Pattern	CARYL	MAYBN	JURAD	RODDI
----------------------	-------	-------	-------	-------



ELEV 75	<b>D</b>	TDZE 75
---------	----------	---------



CATEGORY	A	B	C	D	E
LPV DA	275/18 200 (200-½)				
LNAV/VNAV DA	475/40 400 (400-¾)				
LNAV MDA	520/24 445 (500-½)	520/40 445 (500-¾)	520/50 445 (500-1)		
CIRCLING	540-1 465 (500-1)	540-1½ 465 (500-1½)	640-2 565 (600-2)	760-2½ 685 (700-2½)	

TDZ/CL Rwy 13  
HIRL Rwy 4-22 and 13-31  
REIL Rwy 31