

WAAS CH <b>50113</b> <b>W31A</b>	APP CRS <b>308°</b>	Rwy Idg TDZE Apt Elev	<b>10000</b> <b>63</b> <b>75</b>
--	------------------------	-----------------------------	--

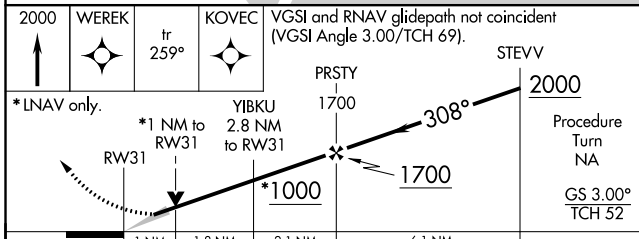
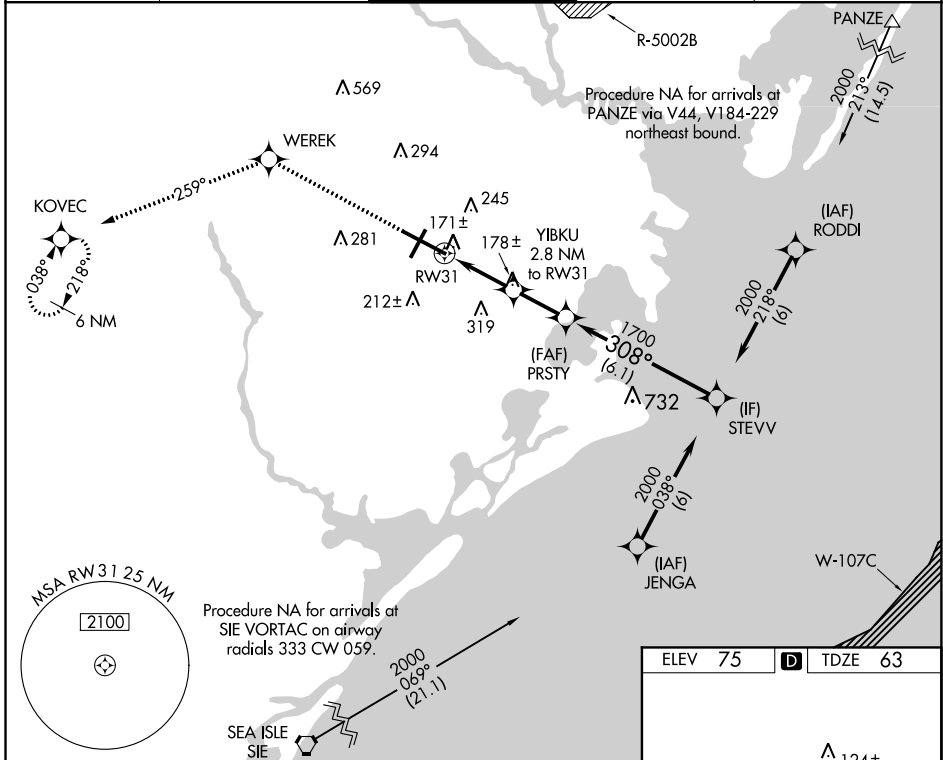
# RNAV (GPS) Y RWY 31

ATLANTIC CITY INTL (ACY)

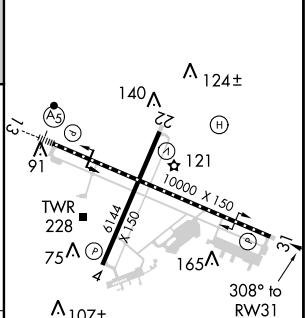
**▲** For uncompensated Baro-VNAV systems, LNAV/VNAV NA below -15°C (5°F) or above 48°C (118°F).  
**▲** ASR DME/DME RNP-0.3 NA.

MISSED APPROACH: Climb to 2000 direct WEREK and on track 259° to KOVEC and hold.

ATIS <b>125.725 316.15</b>	ATLANTIC CITY APP CON <b>124.6 327.125</b>	ATLANTIC CITY TOWER <b>120.3 239.0</b>	GND CON <b>121.9 284.6</b>	CLNC DEL <b>127.85 353.775</b>
-------------------------------	---	---	-------------------------------	-----------------------------------



ELEV 75	<b>D</b>	TDZE 63
---------	----------	---------



CATEGORY	A	B	C	D	E
LPV DA		263/40	200 (200-¾)		
LNAV/VNAV DA		421/60	358(400-1¼)		
LNAV MDA	440/50	377 (400-1)	440/60	377 (400-1¼)	
CIRCLING	540-1	465 (500-1)	540-1½ 465 (500-1½)	640-2 565 (600-2)	760-2½ 685 (700-2½)

TDZ/CL Rwy 13  
 HIRL Rwy 4-22 and 13-31  
 REIL Rwy 31

NE-2, 08 OCT 2020 to 05 NOV 2020

NE-2, 08 OCT 2020 to 05 NOV 2020