

LOC I-BWI 111.95	APP CRS 335°	Rwy Idg TDZE Apt Elev	5000 124 143
----------------------------	------------------------	-----------------------------	---

BALTIMORE/
WASHINGTON INTL THURGOOD MARSHALL (BWI)
I LS or LOC RWY 33R

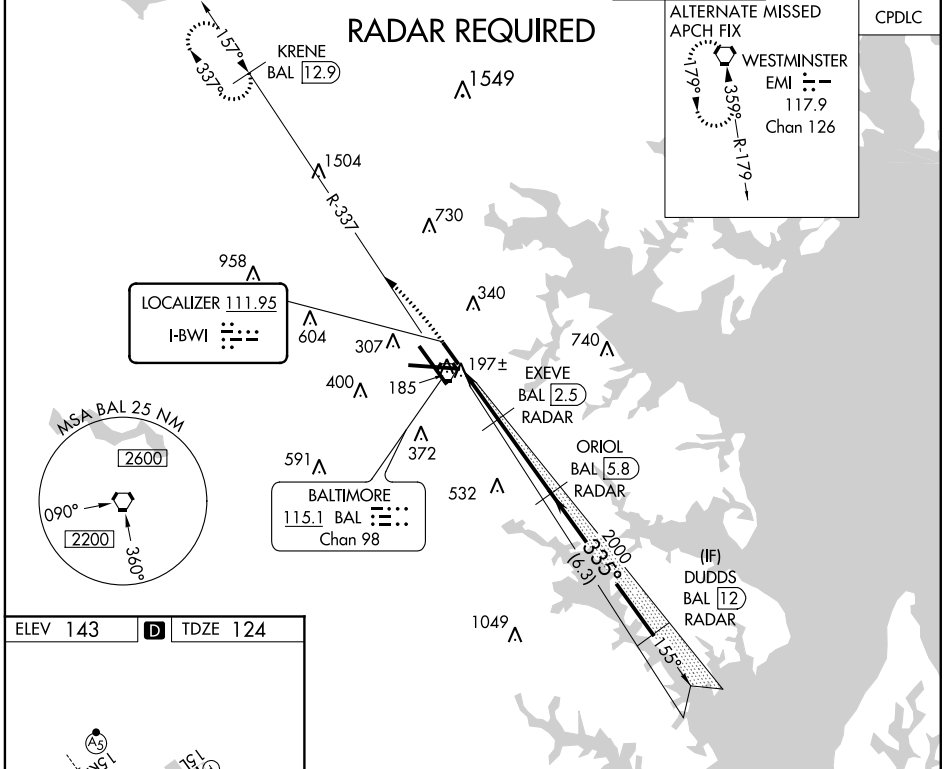
▼ DME required. DME from BAL VORTAC. Simultaneous reception of I-BWI and BAL DME required. Simultaneous approach authorized with Rwy 33L. Inoperative table does not apply to S-ILS 33R. For inoperative MALSR, increase S-LOC 33R visibility to RVR 5000. Helicopter visibility reduction below RVR 4000 NA.



MISSED APPROACH: Climb to 3000 on heading 335° and BAL VORTAC R-337 to KRENE/BAL 12.9 DME and hold.

D-ATIS 115.1 127.8	POTOMAC APP CON 119.0 282.275 (020°-100°) 124.55 317.425 (101°-130°)	119.7 290.475 (131°-180°) 128.7 307.9 (181°-019°)	BALTIMORE TOWER 119.4 257.8	GND CON 121.9	CLNC DEL 118.05
------------------------------	--	--	---------------------------------------	-------------------------	---------------------------

RADAR REQUIRED

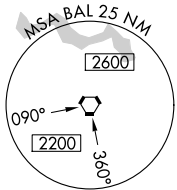


ALTERNATE MISSED APCH FIX
WESTMINSTER
EMI 117.9
Chan 126

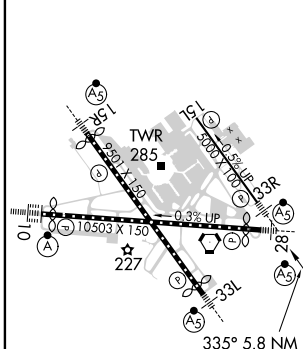
CPDLC

LOCALIZER 111.95
I-BWI

BALTIMORE 115.1 BAL
Chan 98

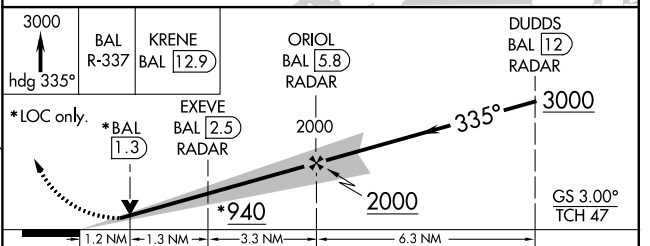


ELEV 143	D	TDZE 124
----------	----------	----------



TDZ/CL Rwy 10 and 33L from FAF 5.8 NM
REIL Rwy 15L and 33R
HIRL all Rwy

FAF to MAP 5.8 NM					
Knots	60	90	120	150	180
Min:Sec	5:48	3:52	2:54	2:19	1:56



CATEGORY	A	B	C	D
S-ILS 33R	333/40	209 (200-¾)		NA
S-LOC 33R	540/40	416 (400-¾)		NA
<input checked="" type="checkbox"/> CIRCLING	640-1 497 (500-1)	660-1 517 (600-1)		NA

NE-3, 08 OCT 2020 to 05 NOV 2020

NE-3, 08 OCT 2020 to 05 NOV 2020