

APP CRS **155°**  
 Rwy Idg **8301**  
 TDZE **138**  
 Apt Elev **143**

# RNAV (RNP) Z RWY 15R

BALTIMORE/WASHINGTON INTL THURGOOD MARSHALL (BWI)

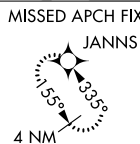
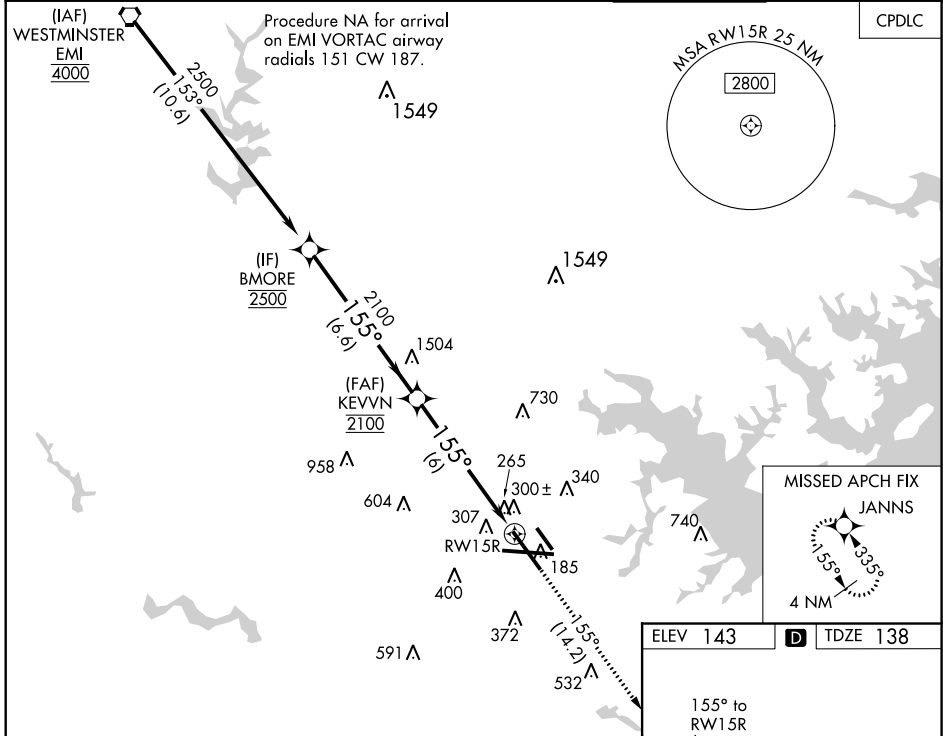
▼ For uncompensated Baro-VNAV systems, procedure NA below -12°C (11°F) or above 54°C (130°F). For inop MALSR, increase RNP 0.11 DA all Cats visibility to 1¼ mile, and RNP 0.30 DA all Cats visibility to 1½ mile. GPS Required.

MALSR

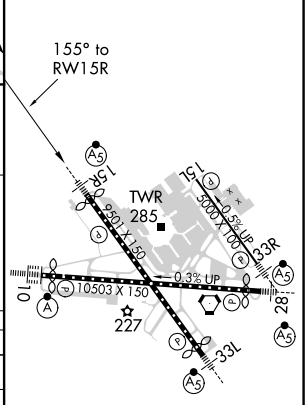
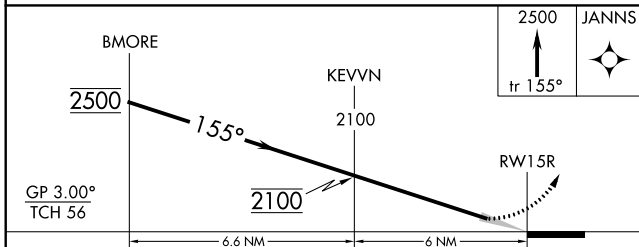


MISSED APPROACH: Climb to 2500 on track 155° to JANNS and hold.

D-ATIS	POTOMAC APP CON	BALTIMORE TOWER	GND CON	CLNC DEL
<b>115.1 127.8</b>	<b>119.0 282.275</b> (020°-100°) <b>119.7 290.475</b> (131°-180°) <b>124.55 317.425</b> (101°-130°) <b>128.7 307.9</b> (181°-019°)	<b>119.4 257.8</b>	<b>121.9</b>	<b>118.05</b>



ELEV 143	<b>D</b>	TDZE 138
----------	----------	----------



CATEGORY	A	B	C	D
RNP 0.11 DA		513/38	375 (400-¾)	
RNP 0.30 DA		588/52	450 (500-1)	

## AUTHORIZATION REQUIRED

TDZ/CL Rwys 10 and 33L  
 REIL Rwys 15L and 33R  
 HIRL all rwys

NE-3, 08 OCT 2020 to 05 NOV 2020

NE-3, 08 OCT 2020 to 05 NOV 2020