

APP CRS **285°**  
 Rwy ldg **9803**  
 TDZE **143**  
 Apt Elev **143**

# RNAV (RNP) Z RWY 28

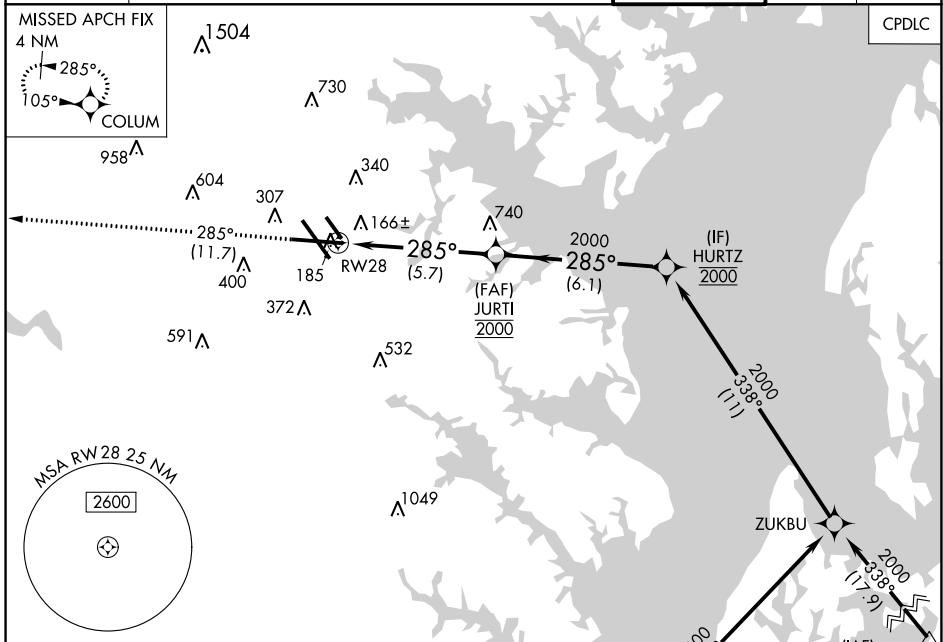
BALTIMORE/WASHINGTON INTL THURGOOD MARSHALL (BWI)

▼ For uncompensated Baro-VNAV systems, procedure NA below -12°C (11°F) or above 54°C (130°F). GPS Required. For inoperative MALSR, increase RNP 0.30 all Cats visibility to 1¼.



MISSED APPROACH: Climb to 2500 on track 285° to COLUM and hold.

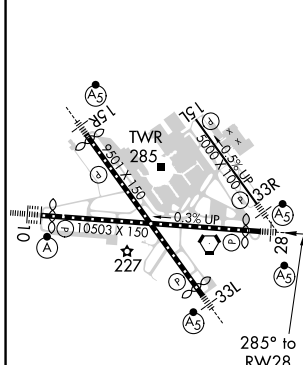
D-ATIS <b>115.1 127.8</b>	POTOMAC APP CON (020°-100°) <b>119.7 290.475</b> (131°-180°) (101°-130°) <b>128.7 307.9</b> (181°-019°)	BALTIMORE TOWER <b>119.4 257.8</b>	GND CON <b>121.9</b>	CLNC DEL <b>118.05</b>
------------------------------	---	---------------------------------------	-------------------------	---------------------------



NE-3, 08 OCT 2020 to 05 NOV 2020

NE-3, 08 OCT 2020 to 05 NOV 2020

ELEV **143** **D** TDZE **143**

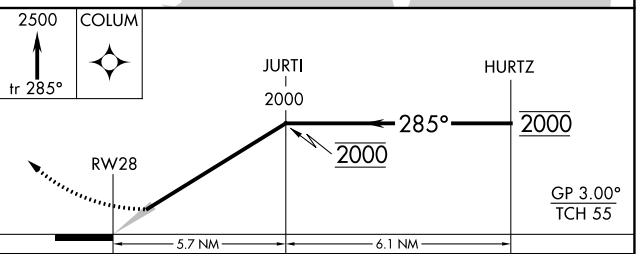


Procedure NA for arrivals at RAVNN on V379 westbound.

(IAF) RAVNN **6000**

Procedure NA for arrivals at BILIT on V308 eastbound.

(IAF) BILIT **11000**  
Max 250 KIAS



CATEGORY	A	B	C	D
RNP 0.30 DA	521/45		378 (400-7%)	

TDZ/CL Rws 10 and 33L  
 REIL Rws 15L and 33R  
 HIRL all rws

## AUTHORIZATION REQUIRED