

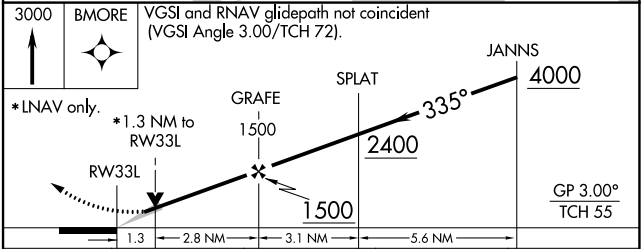
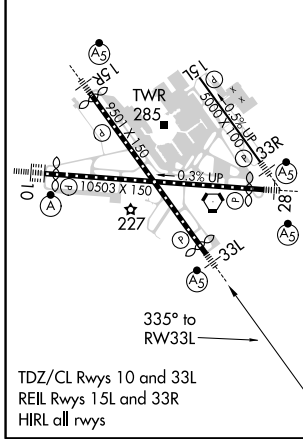
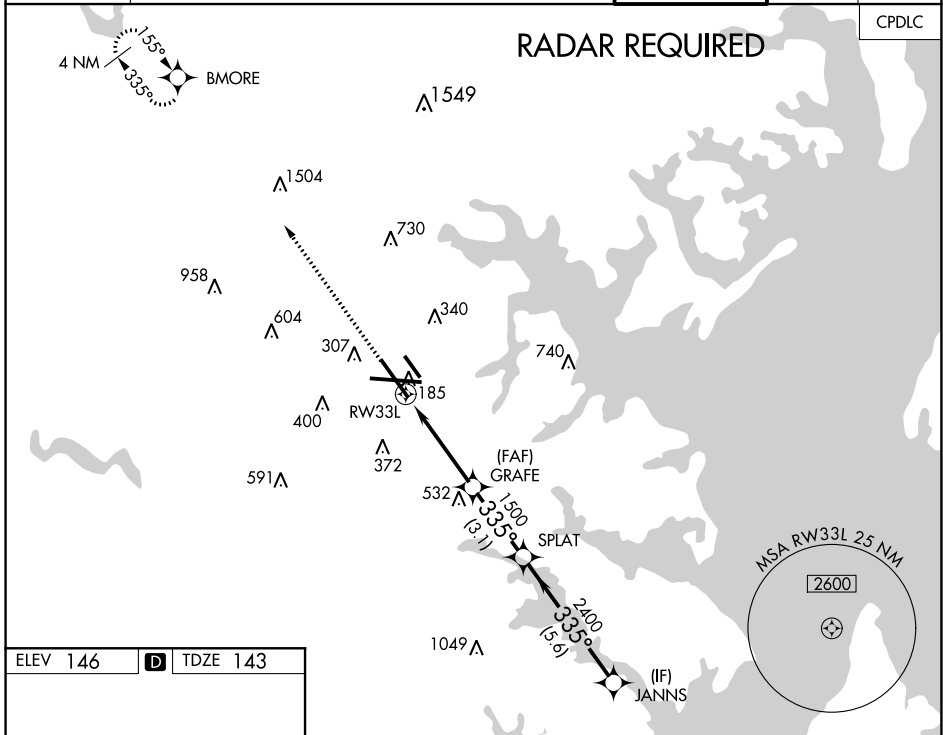
WAAS CH <b>82207</b> W <b>33A</b>	APP CRS <b>335°</b>	Rwy Idg TDZE <b>143</b> Apt Elev <b>146</b>	<b>8301</b> <b>143</b> <b>146</b>
---	------------------------	---	---

# RNAV (GPS) Y RWY 33L

BALTIMORE/WASHINGTON INTL THURGOOD MARSHALL (BWI)

For uncompensated Baro-VNAV systems, LNAV/VNAV NA below -12°C (11°F) or above 54°C (130°F). DME/DME RNP-0.3 NA.	MALS R	MISSED APPROACH: Climb to 3000 direct BMORE and hold.
		AS

D-ATIS <b>115.1 127.8</b>	POTOMAC APP CON (020°-100°) <b>119.7 290.475</b> (131°-180°) (101°-130°) <b>128.7 307.9</b> (181°-019°)	BALTIMORE TOWER <b>119.4 257.8</b>	GND CON <b>121.9</b>	CLNC DEL <b>118.05</b>
------------------------------	---	---------------------------------------	-------------------------	---------------------------



CATEGORY	A	B	C	D
LPV DA		343/18	200 (200-½)	
LNAV/VNAV DA		432/24	289 (300-½)	
LNAV MDA	600/24	457 (500-½)	600/50	457 (500-1)
<b>C</b> CIRCLING	640-1 494 (500-1)	660-1 514 (600-1)	700-1½ 554 (600-1½)	880-2¼ 734 (800-2¼)

NE-3, 08 OCT 2020 to 05 NOV 2020

NE-3, 08 OCT 2020 to 05 NOV 2020